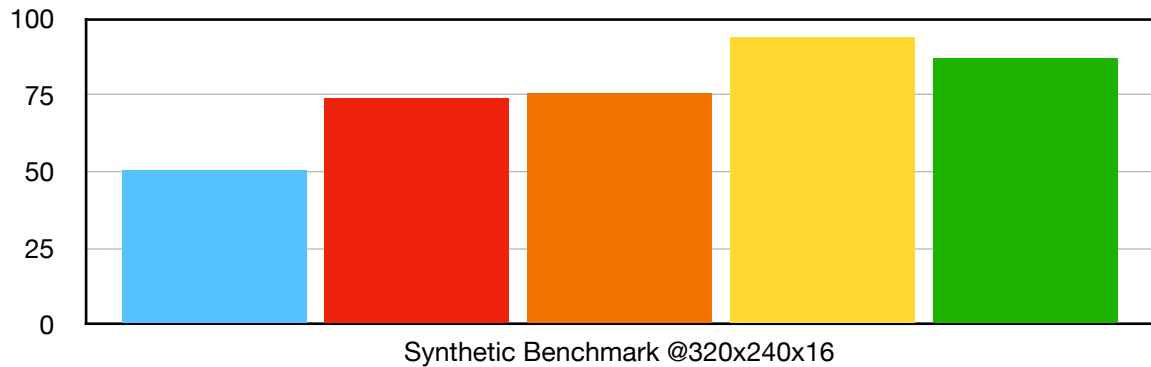


# QuickDraw 3D speed and quality.

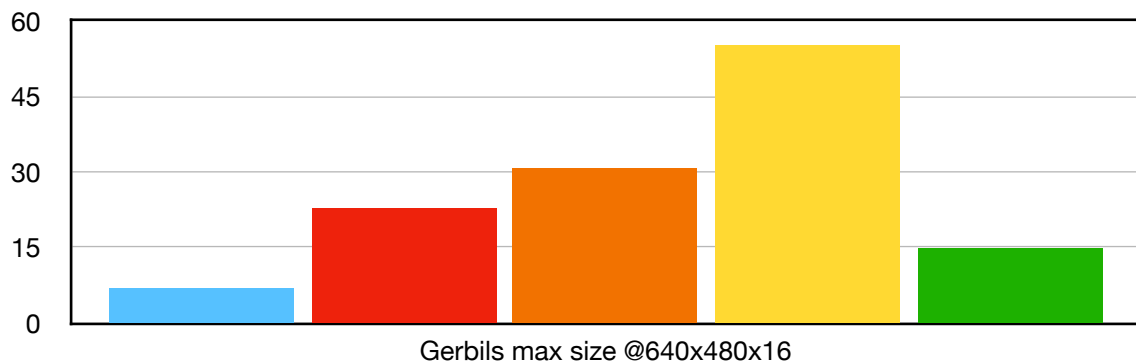
PowerMac 7500 200MHz 604e, 320Mb Ram, no cache, QD3D 1.6

	604e 200	Matrox Mil II	QD3D acc	2x QD3D	S3 Virge	
25px Gouraud	116	126	141	169	156	
50px Gouraud	70	124	104	141	150	
1000px Gouraud	4,2	18	9,5	16,4	16,3	
25px Textured	69	84	110	120	125	
50px Textured	40	83	84	102	68	
1000px Textured	2,5	11	9	15	4,5	
<b>(320x240x16)</b>	50	74	76	94	87	
25px Textured	67	85	108	124	123	
50px Textured	39	85	87	116	74	
1000px Textured	2,3	11	10	18	4,5	
<b>(640x480x16)</b>	3	32	14	26	24	
MPix/s real	5,2	18	11	20	16	
MTex/s real	2,4	12	10	18	4,5	
MPix/s HW		66	20	40	50	
Gerbils max 640x480x16	7	23	31	55	15	
Texture filtering	none	none	trilinear	trilinear	bilinear	

■ 604e 200
 ■ Matrox Mil II
 ■ QD3D acc
 ■ 2x QD3D
 ■ S3 Virge



■ 604e 200
 ■ Matrox Mil II
 ■ QD3D acc
 ■ 2x QD3D
 ■ S3 Virge



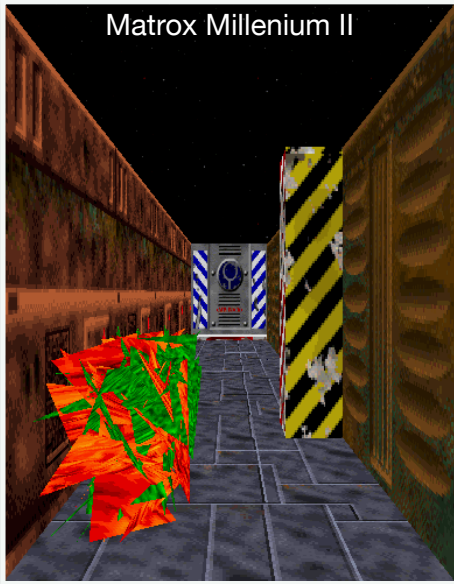
Software



QuickDraw 3D HW



Matrox Millenium II



S3 Virge 325

