



MPEG-to-Go™

Interactive MPEG PC-Card

Installation and User's Guide

for Windows 95 and Windows 3.1

Copyright © Margi Systems 1995-1997. All rights reserved

SOFTWARE LICENSE AGREEMENT FOR MARGI SYSTEMS PRODUCTS

IMPORTANT—READ CAREFULLY: This MARGI Systems Software License Agreement (“SLA”) is a legal agreement between you (either an individual or a single entity) and MARGI Systems for the MARGI software product identified above, which includes computer software and associated media and printed materials, and may include “online” or electronic documentation (“SOFTWARE PRODUCT” or “SOFTWARE”). By installing, copying, or otherwise using the SOFTWARE PRODUCT, you agree to be bound by the terms of the SLA.

SOFTWARE PRODUCT LICENSE

The SOFTWARE PRODUCT is protected by copyright laws and international copyright treaties, as well as other intellectual property laws and treaties. The SOFTWARE PRODUCT is licensed, not sold.

1. GRANT OF LICENSE

- This SLA grants you the rights to install the SOFTWARE PRODUCT in conjunction with the hardware product which it is designed to work with.
- This SLA grants you the right to install the SOFTWARE PRODUCT on multiple computers, provided it is done solely for use with the associated MARGI hardware product.

2. DESCRIPTION OF OTHER RIGHTS AND LIMITATIONS.

- Limitations on Reverse Engineering, Decompilation, and Disassembly. You may not reverse engineer, decompile, or disassemble the SOFTWARE PRODUCT.
- Separation of Components. The SOFTWARE PRODUCT is licensed as a single product. Its components parts may not be separated for use.
- Rental. You may not rent or lease the SOFTWARE PRODUCT.
- Software Transfer. You may permanently transfer all of your rights under this SLA, provided you retain no copies, you transfer all of the SOFTWARE PRODUCT and the associated hardware (including all component parts, the media and printed materials, any upgrades, this SLA), and the recipient agrees to the terms of the SLA.
- Termination. Without Prejudice to any other rights MARGI may terminate this SLA if you fail to comply with the terms and conditions of this SLA. In such event, you must destroy all copies of the SOFTWARE PRODUCT and all of its components parts.

- 3. COPYRIGHT.** All title and copyright in and to the SOFTWARE PRODUCT (including but not limited to any images, photographs, animations, video, audio, music, text, and “applets,” incorporated into the SOFTWARE PRODUCT), the accompanying printed materials, and any copies of the SOFTWARE PRODUCT, are owned by MARGI or its suppliers. The SOFTWARE PRODUCT is protected by copyright laws and international treaty provisions. Therefore, you must treat the SOFTWARE PRODUCT like any other copyrighted material. You may not copy the printed materials accompanying the SOFTWARE.

LIMITED WARRANTY

LIMITED WARRANTY. MARGI warrants that (a) the SOFTWARE PRODUCT will perform substantially in accordance with the accompanying written materials for a period of ninety (90) days from the date of receipt, and (b) any hardware accompanying the SOFTWARE PRODUCT will be free from defects in materials and workmanship under normal use and service for a period of six (6) months from the date of receipt.

CUSTOMER REMEDIES. MARGI’s and its suppliers’ entire liability and your exclusive remedy shall be, at MARGI’s option, either (a) return of the price paid, or (b) repair or replacement of the SOFTWARE PRODUCT or hardware that does not meet MARGI’s Limited Warranty and which is returned to MARGI with a copy of your receipt. This Limited Warranty is void if failure of the SOFTWARE PRODUCT or hardware has resulted from accident, abuse, or misapplication. Any replacement SOFTWARE PRODUCT or hardware will be warranted for the remainder of the original warranty period or thirty (30) days, whichever is longer.

NO OTHER WARRANTIES. TO THE MAXIMUM EXTENT PERMITTED BY APPLICABLE LAW, MARGI AND ITS SUPPLIERS DISCLAIM ALL OTHER WARRANTIES, EITHER EXPRESS OR IMPLIED, INCLUDING, BUT NOT LIMITED TO, IMPLIED WARRANTIES OF MERCHANTABILITY AND FITNESS FOR A PARTICULAR PURPOSE, WITH REGARD TO THE SOFTWARE PRODUCT, AND ANY ACCOMPANYING HARDWARE.

NO LIABILITY FOR CONSEQUENTIAL DAMAGES. TO THE MAXIMUM EXTENT PERMITTED BY APPLICABLE LAW, IN NO EVENT SHALL MARGI OR ITS SUPPLIERS BE LIABLE FOR ANY SPECIAL, INCIDENTAL, INDIRECT, OR CONSEQUENTIAL DAMAGES WHATSOEVER (INCLUDING, WITHOUT LIMITATION, DAMAGES FOR LOSS OF BUSINESS PROFITS, BUSINESS INTERRUPTION, LOSS OF BUSINESS INFORMATION, OR ANY OTHER PECUNIARY LOSS) ARISING OUT OF THE USE OF OR INABILITY TO USE THE SOFTWARE PRODUCT OR ACCOMPANYING HARDWARE, EVEN IF MARGI HAS BEEN ADVISED OF THE POSSIBILITY OF SUCH DAMAGES.

Safety Notice

DANGER

To avoid shock hazard, do not connect or disconnect any cables or perform installation, maintenance, or reconfiguration of this product during an electrical storm.

FCC Statement

This device complies with Part 15 of the FCC Rules. Operation is subject to the following two conditions: (1) this device may not cause harmful interference, and (2) this device must accept any interference received, including interference that may cause undesired operation.

Copyright & Trademark Notice

MPEG-to-Go™ is a trademark of Marge Systems, Inc.

MS-DOS, Windows 3.1, and Windows 95 are trademarks of Microsoft Corporation, all rights reserved. All other trademarks belong to their respective owners.

System Requirements

Notebook Computer with Zoomed Video (**ZV**) Enabled PCMCIA Socket

Processor: 486 or higher (Pentium or Pentium Pro recommended)

Memory: 8MB or more

Operating System: Windows 3.11 and DOS 5.0 or higher
(Windows 95 recommended)

Hard Drive Space: At least 10MB

Display Type: VGA or higher

Other Requirements: PCMCIA Type II Socket w/ Card and Socket Services
Sound Card and Speakers for audio playback

©COPYRIGHT MARGE SYSTEMS, 1996. ALL RIGHTS RESERVED.

Table of Contents

Introduction.....	1
Platform Configurations	1
Important Note for Installation.....	2
SystemSoft card and socket services provider	2
Phoenix card and socket services provider	2-3
OSR2 card and socket services provider.....	3
“What if you do not have card and socket services provider”.....	4
How to Play MPEG and CD-I Titles	4
How to Play an MPEG Audio/Video File	4
How to Play a CD-I Title	5
Adjustment of Audio and Video Properties	5
Adjusting the MPEG Video.....	5
Adjusting the MPEG Audio.....	5
MPEG File Information	6
Optionals	
Creating a Shortcut or Icon for the Media Player.....	6
Using the MPEG-to-Go™ Karaoke Mode	6
Plug and Play	6
Appendix A: Product Specifications.....	7
Product Characteristics	7
Hardware Specifications	7
Software Specifications	7
Normal Operating Specifications.....	7
Appendix B: Troubleshooting.....	7-8
Appendix C: Technical Support Contact Information.....	8
Glossary of Terms	9
Technical Support Form.....	10

List of Figures

Figure 1 - CardWizard displays unconfigured card.....	2
Figure 2 - CardWizard displays configured card.....	2
Figure 3 - Card Agent displays both empty slots	2
Figure 4 - New hardware found with Phoenix Card Agent	2
Figure 5 - Card Agent displays configured card.....	3
Figure 6 - PC Card displays both empty slots.	3
Figure 7 - New hardware found with OSR2 - PC Card.	3
Figure 8 - PC Card displays configured card	3
Figure 9 - Windows Media Player.....	4
Figure 10 - Windows 95 MPEG File List.....	4
Figure 11 - MPEG Properties Dialog Box.....	5
Figure 12 - MPEG Video Control Dialog Box.....	5
Figure 13 - MPEG Audio Control Dialog Box.....	5
Figure 14 - MPEG Information Dialog Box.....	6

Introduction

What Is MPEG-to-Go?

MPEG-to-Go™, by MARGI SYSTEMS, INC., is a Type II PCMCIA Zoomed Video (ZV)-compliant card designed to provide full-motion (30 frames per second) video playback along with CD quality sound for a variety of applications. **MPEG-to-Go™** has wide ranging compatibility, including the Video CD, Karaoke CD, CD-I Audio/Video, and Multimedia PC (MPC) standards. This incredible functionality makes it a must for multimedia presentations, interactive education, business marketing, or just having fun.

With **MPEG-to-Go™** you get the leading edge of advanced application and technical features such as:

- Higher video throughput with up to 5 Mbits/sec of sustained full-motion video streaming for smooth video playback.
- Better quality frame rate; no dropped frames for crisp video without jitter.
- Requires less than 10% of CPU bandwidth
- Compatibility across multiple platforms
- Highly optimized Windows™ and VPM drivers
- ‘Hot’ plug-and-play functionality, allowing users to remove and re-insert the card, while the video resumes at the point of playback
- Multitasking capability, allowing users to create and use multiple applications on the screen, such as a spreadsheet while running the video application.
- Comprehensively tested with leading VGA and PCMCIA socket controllers

Platform Configurations

NO SPECIAL CONFIGURATION IS REQUIRED FOR MOST SYSTEMS. ALL SYSTEMS MUST BE ZOOMED VIDEO (ZV) ENABLED. PLEASE REFER TO APPENDEX “B” ON “*How can I find out which version of Windows 95 is installed in my notebook*”.

- **Platforms with Windows 95 or 95a - OSR1:**

- COMPAQ - Armada 4100 series:**

- SystemSoft - CardWizard: version 4.30.11 (7/25/96) or greater
 - Cirrus Logic - 7548: version 1.36 or greater

- GATEWAY 2000 - Solo 2100:**

- SystemSoft - CardWizard: version 4.20.03 (4/8/96) or greater
 - Cirrus Logic - 7548: version 1.36 or greater

- TOSHIBA - Satellite 400 series, Tecra 700 series:**

- SystemSoft - CardWizard: version 4.20.00 (3/13/96) or greater
 - Chips & Technology - 65550: version 1.1.0.116 (3/4/97) or greater

- TEXAS INSTRUMENTS (TI) - TravelMate 6000 series, Extensa:**

- Phoenix - Card Agent: version 4.00.08 (10/17/96) or greater
 - Cirrus Logic - 7548: version 1.36 or greater

- **Platforms with Windows 95B - OSR2:**

NO SPECIAL CONFIGURATION IS REQUIRED

SPECIAL NOTE:

Follow the directions carefully in the following pages for the difference between :

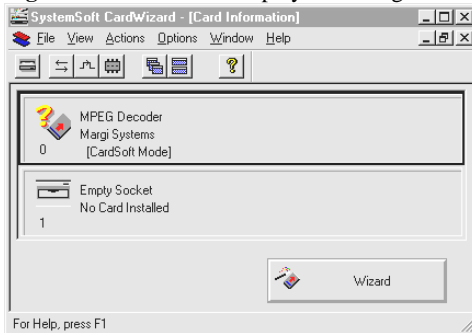
- (1) Windows 95-OSR1 with SystemSoft CardWizard,
- (2) Windows 95-OSR1 with Phoenix CardAgent, and
- (3) Windows 95B (Latest version)-OSR2.

Skipping any step may result in improper operation:

Important Note for Installation:

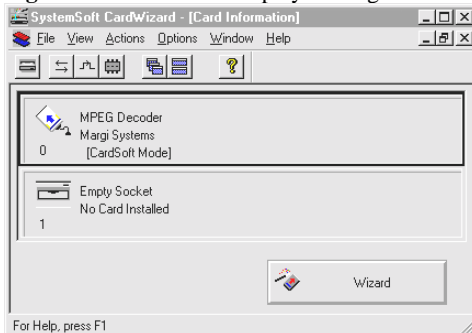
1. The instructions are for installation of the **MPEG-to-Go™** MCI drivers on a Windows 95 or Windows 3.11 platform with VPM 1.10 or VPM 1.05 and PCMCIA 5.0 Card and Socket Services with Zoomed Video (**ZV**) support.
- **SystemSoft CardWorks** card and socket services (*does not support Plug-and-Play*):
 - ⇒ Windows 95 (OSR1) and Windows 3.11:
 - ◇ Run the SystemSoft CardWizard to detect the card information. (*refer to the notebook documentation for launching the application*).
 - ◇ Simply insert **MPEG-to-Go™** card into the **ZV** slot (*see Figure 1*).

Figure 1 - CardWizard displays unconfigured card



- ◇ Run **A:\SETUP.EXE** from the driver diskette (*Please note that the installation must be done from the floppy disk*). After the installation is complete, restart Windows for the settings to take place.
- ◇ There will 2 loud beeps once the card is recognized and the "?" will be removed (*see Figure 2*).

Figure 2 - CardWizard displays configured card

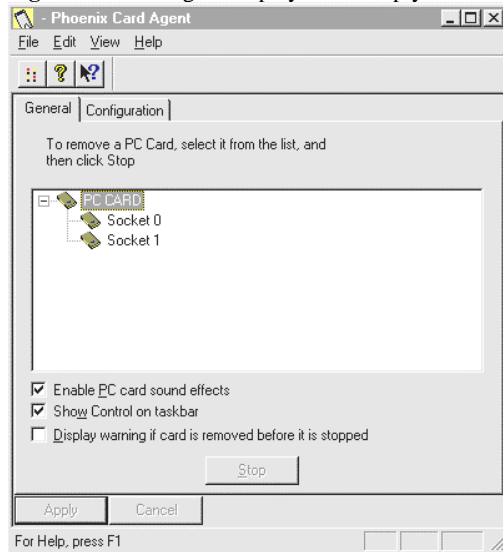


- **Phoenix CardAgent** card and socket services provider (*supports Plug-and-Play*):

⇒ Windows 95 (OSR1) and Windows 3.11:

- ◇ Run the Phoenix CardAgent to detect new card (*see Figure 3*). (*refer to the notebook documentation for launching the application*).

Figure 3 - Card Agent displays both empty slots.



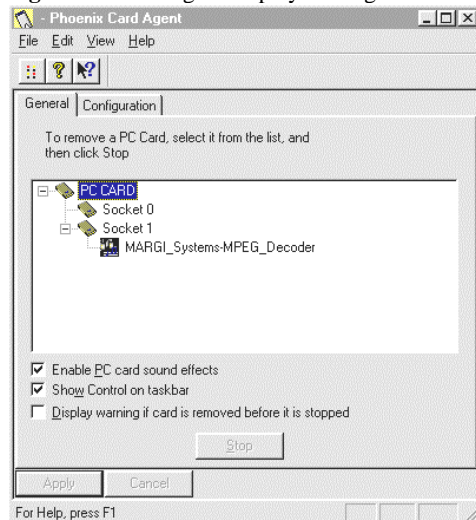
- ◇ Simply insert the **MPEG-to-Go™** card into the **ZV** slot. (*see Figure 4*)

Figure 4 - New Hardware Found with Phoenix Card Agent



- ◇ Choose "Driver provided by hardware manufacturer" when prompted.
- ◇ When prompted for the location of the drivers, type A:\ (or the location of the installation floppy), and click **OK**. The drivers will then be automatically installed.
- ◇ After the installation is complete, remove the diskette from the drive and restart Windows so that the changes can take effect.
- ◇ After rebooting, there will be 2 loud beeps once the card is recognized. (*see Figure 5*)

Figure 5 - Card Agent displays configured card

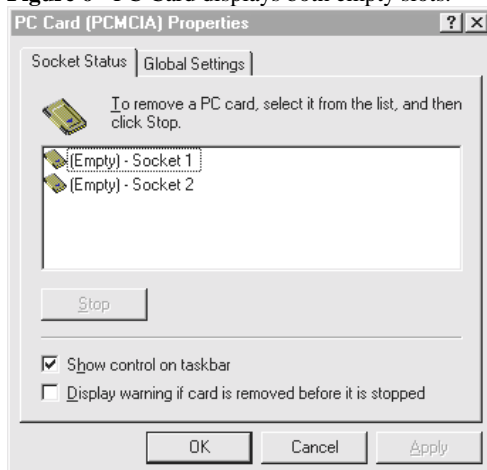


- **WINDOWS 95B - OSR2** card and socket services provider (*supports Plug-and-Play*):

⇒ Windows 95B [4.00.95B] - (*latest release*):

- ◇ Run PC Card (PCMCIA) Property from the **Control Panel** to detect new card (*see Figure 6*).

Figure 6 - PC Card displays both empty slots.



- ◇ Simply insert the **MPEG-to-Go™** card into the **ZV** slot. (*see Figure 7*)

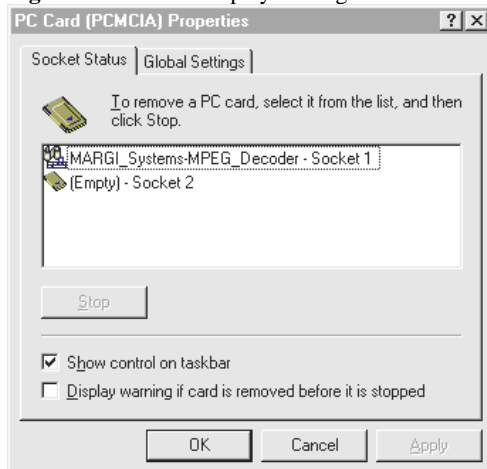
Figure 7 - New Hardware Found with OSR2 - PC Card



IMPORTANT: Windows 95 will prompt for the location of the file 'MargiPNP.vxd' since it could not be found. At this point, simply type **A:** (or the location of the installation floppy diskette in which this file is located), and click **OK**. The drivers will then be automatically installed.

- ◇ After the installation is complete, there will be 2 loud beeps once the card is recognized (*see Figure 8*)

Figure 8 - PC Card displays configured card



⇒ Windows 3.11:

- ◇ Insert the **MPEG-to-Go™** card into the **ZV** slot.
- ◇ Choose **R**un from the **F**ile menu.
- ◇ type **A:\SETUP.EXE** (*Please note that the installation must be done from the floppy disk*), then click **OK**.
- ◇ Follow the onscreen instructions to install **MPEG-to-Go™** drivers onto your hard drive.
- ◇ After the installation is complete, remove the diskette from the drive and restart Windows so that the changes can take effect.

What if you do not have Card and Socket Services?

(Note: This applies to early generation of Zoomed Video notebooks)

If you do not have card and socket services installed, do the following

1. Start Windows and insert the **MPEG-to-Go™** installation floppy diskette.
2. Run **A:\SETUP.EXE** from the diskette.
3. After the installation is complete, restart Windows for the settings to take place.
4. Change the following line in the **MCIZMPG.INI** file, located under C:\WINDOWS directory.

from	NoConfigManager=0	from	BaseAddress=0x100
to	NoConfigManager=1	to	BaseAddress=0x280

5. Comment out the following line in the [386Enh] section of the **SYSTEM.INI** file, located under C:\Windows directory:

DEVICE=MARGIPNP.VXD

Insert the **MPEG-to-Go™** card into the **ZV** slot and run the following line on the DOS prompt (which can be put in the **AUTOEXEC.BAT** file)

C:\Windows\zmpeg\setmiser AZX

IMPORTANT: In order for the above command to take place, the **MPEG-to-Go™** card has to be inserted into the ZV slot.

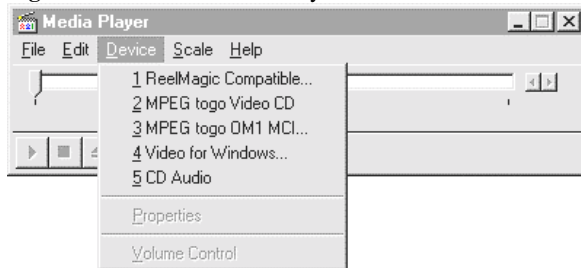
The above line sets the default base address at 0x280. In order to set a different base address, if needed, run the setmiser with appropriate options (Example: For a base address of 0x330 use AZXI0330; current default AZX is equivalent to AZXI0280.) Also change the **MCIZMPG.INI** in the C:\Windows directory to change the line BaseAddress=0x280.

How to Play MPEG and CD-I Titles:

How to Play an MPEG Audio/Video File

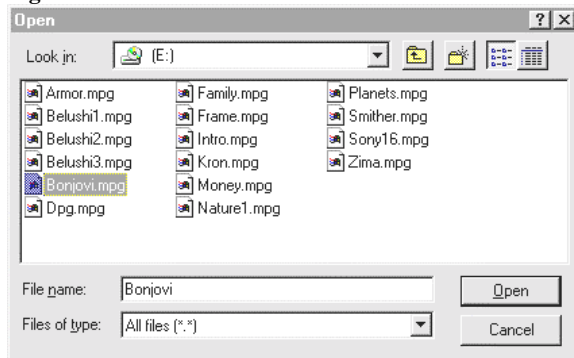
1. Start Windows after installing the **MPEG-to-Go™** MCI drivers (see *Software Installation*).
2. Choose **Run** from the **Start** menu (Windows 95) or the **File** menu (Windows 3.11).
3. Type C:\WINDOWS\MPlayer (or the name of the drive and directory that contains the Windows files, followed by "Mplayer"), then click **OK**.
4. The Media Player program will start (see *Figure 9*). From the **Device** menu choose *MPEG togo OM1 MCI...*

Figure 9 - Windows Media Player



5. Select the MPEG file (a file with extension .MPG) to be played from the file list (see *Figures 10*). Windows *Help* has additional information about finding files.

Figure 10 - Windows 95 MPEG File List



6. After the file is selected, click on the **Play** button to play the MPEG file (see *Media Player Help* for additional features of the Media Player).

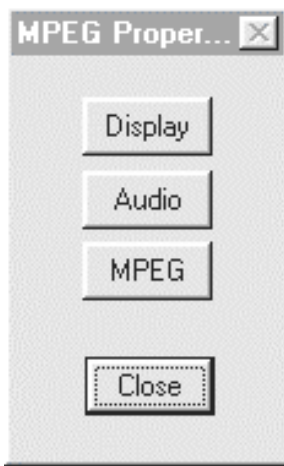
How to Play a CD-I Title

1. Follow steps 1 to 3 in the *How to Play an MPEG Audio/Video File* section to open the Windows Media Player program.
2. The Media Player program will start. From the **Device** menu choose *MPEG togo Video CD* (see *Figure 9*).
3. The computer will now search the CD-ROM drive for CD-I titles. When it is done, choose the title to be played and hit **OK**.
4. After the file is selected, click on the **Play** button to play the CD-I (see *Media Player Help* for additional features of the Media Player).

Adjustment of Audio and Video Properties:

To adjust different properties of the audio and video playback, select *Properties* from the **Device** menu to bring up the **MPEG Properties** dialog (see *Figure 11*).

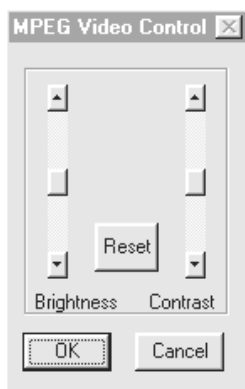
Figure 11 - MPEG Properties Dialog Box



Adjusting the MPEG Video

1. To adjust the MPEG Video, first bring up the **MPEG Properties** dialog (see *Figure 11*).
2. Click the **Display** button. This will bring up the **MPEG Video Control** dialog (see *Figure 12*).

Figure 12 - MPEG Video Control Dialog Box



3. Use the scroll bars to adjust the brightness of the picture and the contrast to the desired levels. To set the brightness and contrast back to their default levels, click **Reset**. To accept the settings, click **OK**, or click **Cancel** to exit without making the changes.

Adjusting the MPEG Audio

1. To adjust the MPEG Audio, first bring up the **MPEG Properties** dialog (see *Figure 11*).
2. Click the **Audio** button. This will bring up the **MPEG Audio Control** dialog (see *Figure 13*).

Figure 13 - MPEG Audio Control Dialog Box

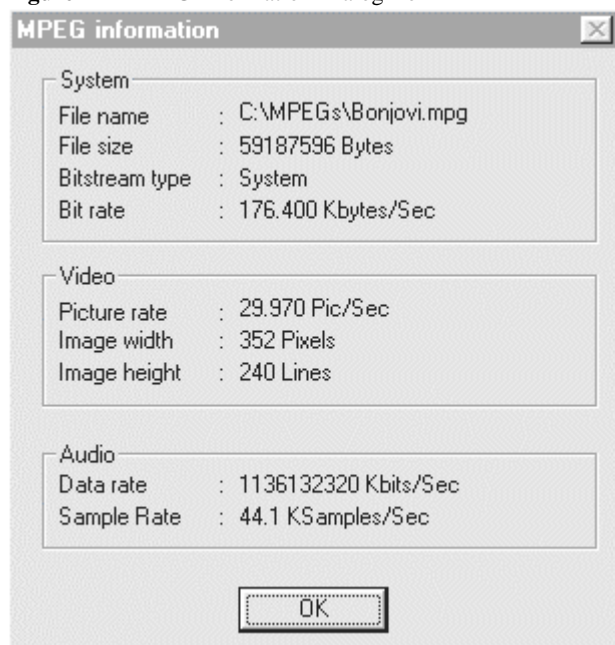


3. If you wish to turn off all audio, click **Mute**, or to swap the sound coming out of the right and left speaker, click **Swap L/R**. For normal audio operation, click **Normal**.

MPEG File Information

1. To obtain information about the MPEG file being played, first bring up the **MPEG Properties** dialog (see *Figure 11*).
2. Click the **MPEG** button. This will bring up the **MPEG Information** dialog (see *Figure 14*).
3. Information about the MPEG file, such as the file name, file size, and picture display size, will be displayed in this dialog. Click **OK** to close the dialog.

Figure 14 - MPEG Information Dialog Box



Optional - Creating a Shortcut or Icon for the Media Player

Windows 95:

1. Using *Windows Explorer*, find the **Mplayer** file in your WINDOWS directory.
2. Click once on the file, then click the right button once. Choose *Create Shortcut* from the menu that appears.
3. Drag the new **Shortcut to Mplayer** file onto your desktop. You can now double click on that icon to run the Media Player.

Windows 3.11:

1. Open the **Accessories** folder on your desktop (or any folder you wish to store the icon in).
2. Select *New* from the **File** menu, click on **Program Item**, then click **OK**.
3. In the space next to **Command Line**, type C:\WINDOWS\Mplayer.exe (or the name of the drive and directory that contains the Windows files, followed by "Mplayer.exe"), then click **OK**. You can now double click on that icon to run the Media Player.

Optional - Using the MPEG-to-Go™ Karaoke Mode

1. Insert a Karaoke Video CD into your computer's CD-ROM drive. Note: The Video CD must bear a label stating that it is a Karaoke CD for the **MPEG-to-Go™** Karaoke Mode to work.
2. Insert a microphone into your computer's microphone or audio input jack.
3. Follow the instructions for playing a Video CD (see *How to Play a CD-I Title*).
4. Once the Video CD begins playing, bring up the **MPEG Audio Control** dialog (see *Adjusting the MPEG Audio & Figure 13*).
5. Click **with out vocal** to listen to only the song's background music. When you sing into the microphone, the sound will be played through the speakers along with the song's background music.
6. To listen to the Karaoke CD normally, click **with vocal**.

Plug and Play

- The *Card Services* should recognize the **MPEG-to-Go™** card as follows:

MPEG Decoder Margi Systems

- The MPEG driver supports *hot unplugging* of the MPEG card. If a MPEG file is playing and the **MPEG-to-Go™** card is removed, the file being played will stop. When the card is reinserted, pressing play will continue playback from the current position. If the play is pressed when the MPEG card is extracted then the driver will prompt for card insertion.

Appendix A: Product Specifications

Product Characteristics

- Type II PCMCIA card compatible with the Zoomed Video (**ZV**) Standard
- MPEG-1 Video Resolution of 352x240 at 24 Bits per pixel (16 Million Colors)
- Provides full-screen, full-motion, VHS quality video playback with CD quality sound

Hardware Specifications

- 16 bit YUV Video Interface providing TrueColor Quality
- 16 bit digital Audio Interface providing CD Quality Sound

Software Specifications

- Hot Plug & Play with Card and Socket Services Compatible for Windows 95, Windows 3.11
- OM-1 MPEG MCI Drivers for Windows 95 and 3.11
- Video CD (Green & White Book), Video CD 2.0, 1.1, Karaoke CD
- CDI-Video Compatible
- RealMagic Compatible

Normal Operating Specifications

- Typical Operation Power dissipation: 1.75 Watts
- Operating Voltage: 5 Volts
- Operating Temperature Range: 5°C~30°C
- Operating Relative Humidity Range: 30%~80%

Appendix B: Troubleshooting

Frequently Asked Questions

- Q. After installing the 'drivers' and rebooting, I get a blue screen error "The PCcard driver MARGIPNP.VXD requires a Zoomed Video Card Service Provider version 5.0 or greater... "?
A. Without Card and Socket Services, standard Windows 95 (4.00.950 and 4.00.95a) - OSR1 will not recognize the card through the ZV port (*refer to the section "What if you don't have Card and Socket Services" on page #4 for more information*). Another way to resolve this matter is to install a third party Card and Socket Services either SystemSoft CardWorks or Phoenix CardAgent (*contact your notebook manufacturer or distributor for the updated version of Card and Socket Services*). Most of the current release ZV notebooks are equipped with the latest Windows 95 (4.00.95B) - OSR2.
- Q. Why do I get an error message "Insert MPEG togo Card into a Zoomed Video Socket" when I try to open a MPEG file for playback?
A. Ensure that the MPEG-to-Go card is inserted into the Zoomed Video (ZV) slot (*refer to the notebook User's Guide to verify which slot supports the Zoomed Video*).
- Q. How can I find out which version of Windows 95 is installed in my notebook?
A. You can easily find out the current version of Windows 95 by going into the Control Panel - System Properties - General. Under the System section, 4.00.950 or 4.00.95a for Windows 95 - OSR1, 4.00.95B for Windows 95 - OSR2.
- Q. Why do I get an error message "PNP Driver Failure" and "Media Player caused a general failure in MMSYSTEM262 ..."?
A. If your notebook have the latest version of Windows 95 [4.00.950B] - OSR2, then by installing our driver "A:\SETUP.EXE" from the floppy disk will create a setting for non-Plug-and -Play support inside the SYSTEM.INI file. To fix this problem by going into the SYSTEM.INI and remove the line "device=MargiPNP.vxd" under the [386Enh] section.
- Q. When playing MPEG files using media player, I cannot hear any audio coming out from the notebook?
A. This is due to the audio - line in not being enabled inside the volume controls. Double-click on the Volume icon from the System Tray and go into the Options - Properties to enable the Line-In for Playback. Note: Some notebook required to enable the ZV port within "Advanced Controls for Volume Controls" (*refer to notebook documentation for details*)

Error Message Text and Solutions

If you encounter any error messages that are not included in this User's Guide, please write down the details of the message and contact technical support.

Error #2 "Unable to create VPM provider [xxxxVPM.DLL], Invalid VPM version, Unable to load MARGIVPM.Dll [-27] or MARGIVPM.105 [-2]".

Solution—The version of Video driver does not fully support the Zoomed Video port. The updated version of VGA driver can be obtained by contacting the notebook manufacturer or the video controller manufacturer. Best way to do is to download the driver from their web sites.

Error #10 "Unable to create VPM stream - VPM Error -10, Insufficient frame buffer memory, Try reducing the display pixel depth or the display resolution".

Solution—This is due to the limitation on the memory buffer available for the video to playback. The best thing to do is to free up some memory buffer by reducing the desktop setting (resolution and color mode).

Error #261 "Unable to load MARGIVPM.DLL [-261] or MARGIVPM.105 [-261]".

Solution— There should be a line to enable the video VPM provider inside the SYSTEM.INI under [drivers] section. Example: If the notebook have a Chips & Technology video controller built-in, then a line "VPM=CHIPSVPM.DLL" should be added by updating the latest VGA driver.

Appendix C: Technical Support Contact Information

Before You Contact Technical Support

MARGI SYSTEMS is committed to providing you with comprehensive technical support. However, before calling our technical support department, please try to resolve your problem by using this guide. Also, check the README.TXT file for information that has changed since this guide was printed.

If you cannot find the solutions you need in this guide please have the following information ready or send it along when you contact technical support: (*refer to **page #10** for a complete Technical Support Form*)

Contacting MARGI Technical Support

If you cannot get the help you need from this guide you can contact our technical support department in any of the ways listed below. You must be a registered MPEG-To-Go card user to receive the following types of technical support.

Fax

510-657-4430

Fax the information listed on **page #10** to the technical support fax number. This service is available in the U.S., 24 hours a day, 7 days a week. We try to respond to all fax requests within 24 hours.

Telephone

510-657-4435 ext. 22

Support is available Monday through Friday, 9 a.m. to 6 p.m. after you have sent the Technical Support Form on **page #10**.

Internet

You can contact MARGI SYSTEMS through the Internet by sending an E-mail message including the Technical Support Form on **page #10** to support@margi.com.

Web Site

<http://www.margi.com>.

Postal Service Mail

MARGI SYSTEMS, INC.
3155 Kearney Street, Suite 170
Fremont, CA. 94538
USA

Glossary of Terms

- *Card and Socket Services* - A set of software interfaces that automatically detect insertion and removal on PCMCIA cards and allocates the appropriate computer resources.
- *Hot Plugging/Unplugging* - The insertion/removal of the **MPEG-to-go™** card while the card is playing a file. This feature allows the card to be removed and reinserted without termination of the file being played.
- *Motion Pictures Expert Group (MPEG)* - A group that under International Standards Organization (ISO) sponsorship defined the electrical and functional specifications for the MPEG multimedia standard.
- *OEM Service Release (OSR)* - A version of Windows 95 released to PC vendors that included a variety of bug fixes as well as support for enhanced devices. OSR1 applies for Windows 95 version [4.00.950 and 4.00.95a] and OSR2 applies for the latest version [4.00.950B].
- *PCMCIA - Personal Computer Memory Card International Association* - This is the organization responsible setting the standards followed by any card that bears this name. These standards describe things like physical characteristics and electrical specifications.
- *ZV (Zoomed Video)* - A video standard that allows full motion, full-frame video display on notebook computers.
- *Zoomed Video (ZV) Port* - An extension to the PC Card (PCMCIA) standard that provides a high transfer rate for video applications on notebooks. Video data goes directly to the display controller, bypassing the CPU and system bus, allowing full-screen, full-motion (30 frames per second) playback of digital video. The ZV Port is activated by plugging in a PC Card that is ZV Port-compliant.