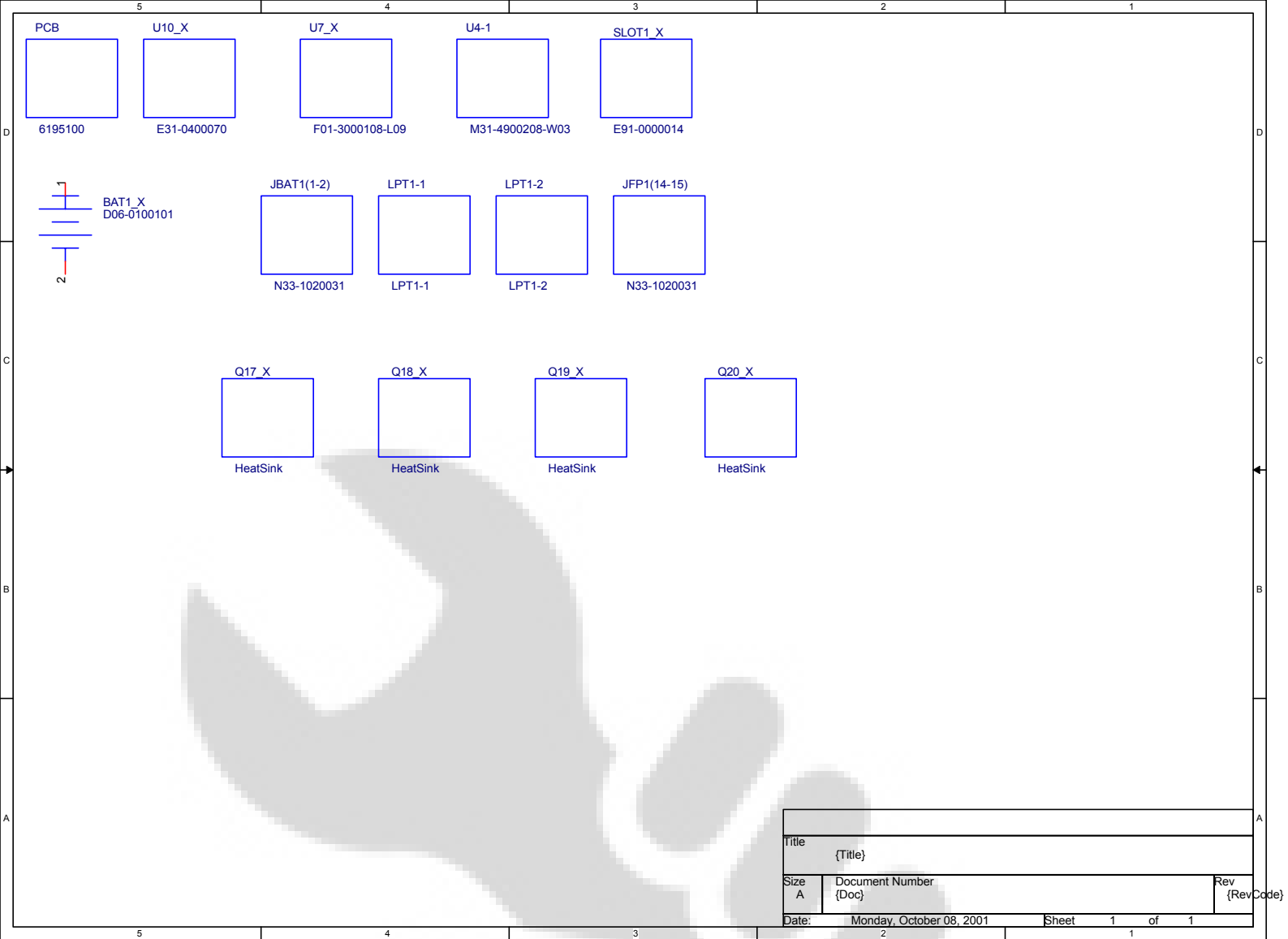


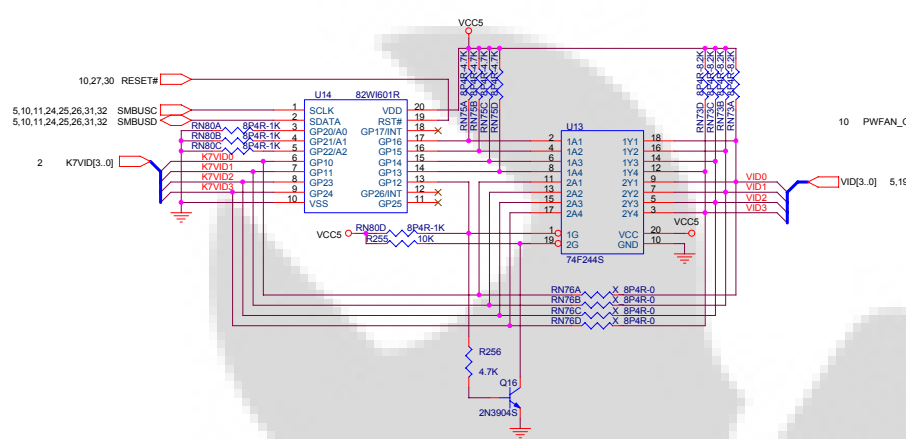
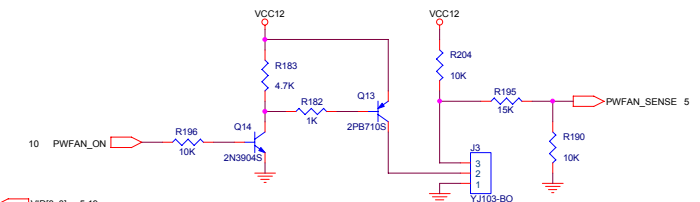
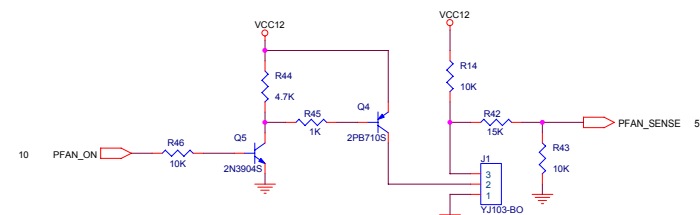
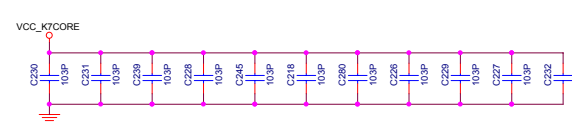
MS-6195 Ver. 1.0

TABLE OF CONTENTS

SHEET 1	COVER SHEET	SHEET 17	PCI SLOTS 3 AND 4
SHEET 2	K7 SLOT	SHEET 18	PCI SLOTS 5, 6 & PULL UPS/BYPASS CAPACITORS
SHEET 3	K7 SLOT 2 - SRAM VREG/PROCESSOR FAN	SHEET 19	K7 POWER SUPPLY - SEMTECH SC1154
SHEET 4	K7 SLOT 3 - PULL UP TERMINATION/BYPASS CAPACITORS	SHEET 20	AUDIO CONTROLLER
SHEET 5	SYSTEM MANAGMENT - WINBOND WD83782D	SHEET 21	AUDIO CODEC
SHEET 6	FRONT PANEL - CHASSIS SPEAKER/SYSTEM FAN/ POWER BUTTON/SLEEP BUTTON/KEYLOCK	SHEET 22	AUDIO AMP
SHEET 7	ISA CONNECTORS	SHEET 23	AUDIO & GAME PORT
SHEET 8	ISA PULLUPS	SHEET 24	SDRAM DIMM 3
SHEET 9	SUPER IO - WINBOND W83977ATF	SHEET 25	SDRAM DIMM 2
SHEET 10	VIPER SOUTHBRIDGE	SHEET 26	SDRAM DIMM 1
SHEET 11	VIPER SOUTHBRIDGE STRAPPING, RESET BUTTON HEADER	SHEET 27	IRONGATE NORTH BRIDGE
SHEET 12	USB CONNECTORS	SHEET 28	IRONGATE NORTH BRIDGE
SHEET 13	SERIAL/PARALLEL PORTS	SHEET 29	NB SIP EEPROM/CONFIG/BYPASS CAPS
SHEET 14	FLOPPY/IDE/ATX POWER/KEYBOARD/MOUSE	SHEET 30	AGP CONNECTOR/PULL-UP/BYPASS CAPS
SHEET 15	FLASH ROM	SHEET 31	CLOCK GENERATOR - ICS9248-110
SHEET 16	PCI SLOTS 1 & 2 & PLD	SHEET 32	CLOCK GENERATOR - ICS 9179-06 ZERO DELAY BUFFER

MSI			
Title MS-6195			
Size B	Document Number COVER SHEET		Rev 1.0
Date:	Tuesday, September 26, 2000	Sheet 1	of 32

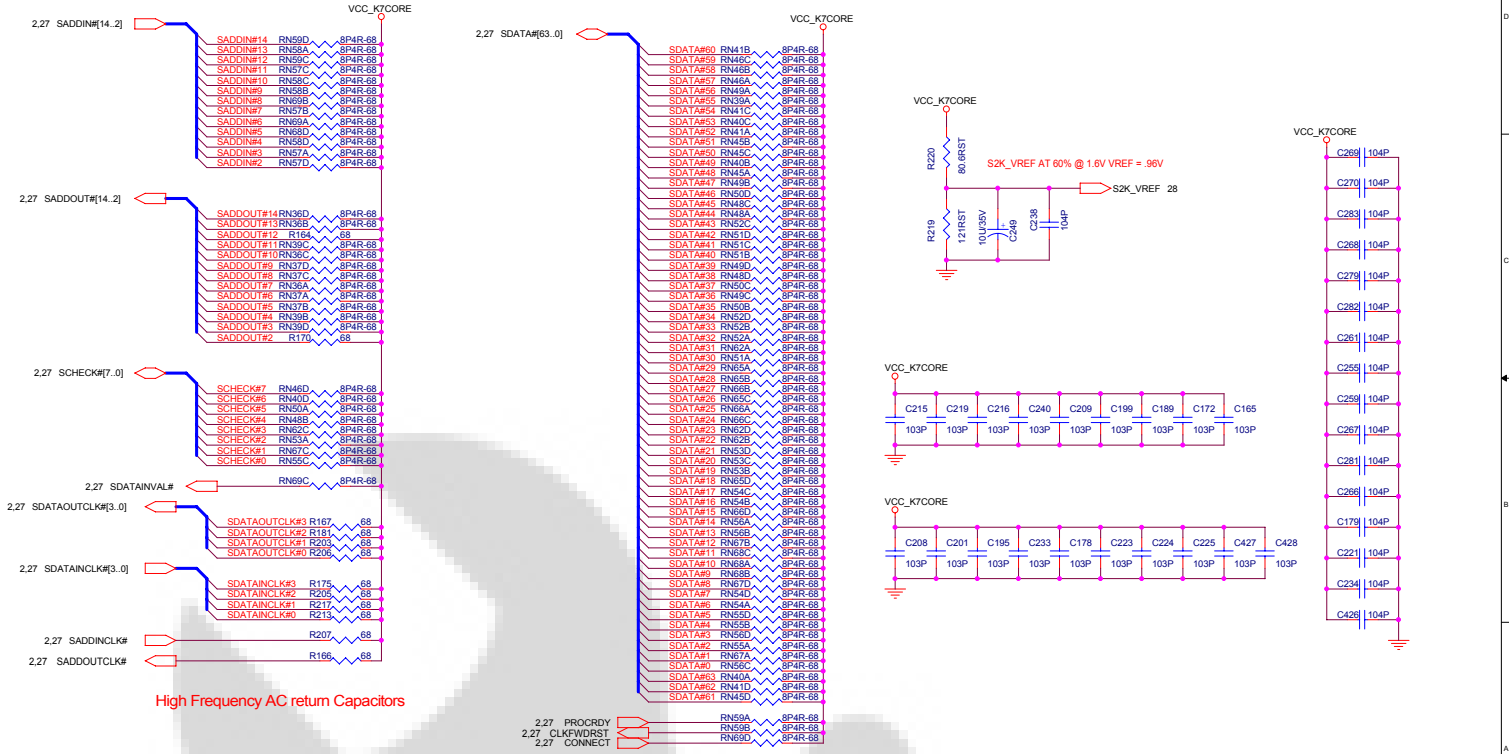




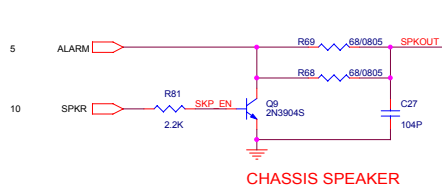
MSI			
Title			
MS-6195			
Size B	Document Number		
	SRAM VR & FAN CONNECTOR		
Date:	Saturday, October 05, 2001	Sheet	3 of 32
			Rev 1.0

Keep S2K bus termination resistors within 1"

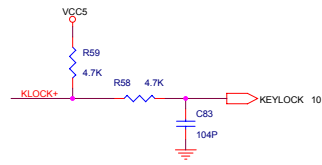
Bypass capacitors must be placed next to res pak for proper bypassing



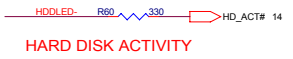
MSI			
Title			
MS-6195			
Size	Document Number	Rev	
B	K7 PULL-UP/BYPASS	1.0	
Date	Saturday, October 06, 2001	Sheet	4 of 32



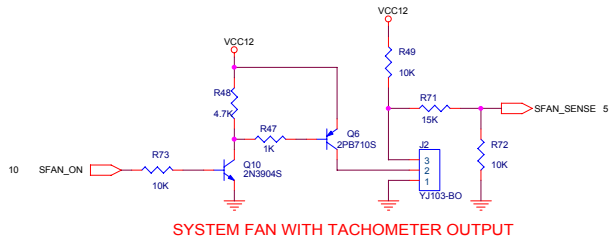
CHASSIS SPEAKER



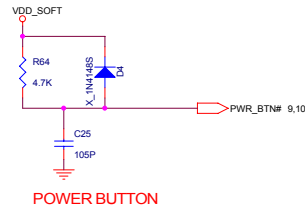
SLEEP BUTTON



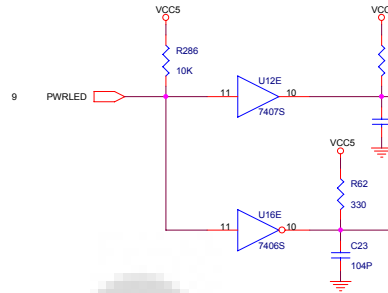
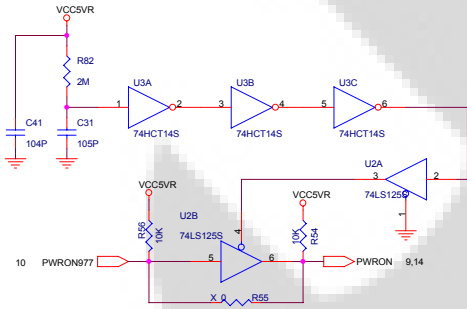
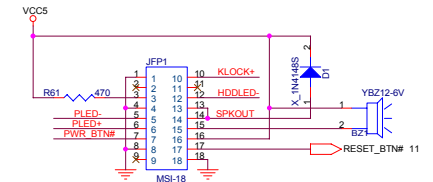
HARD DISK ACTIVITY



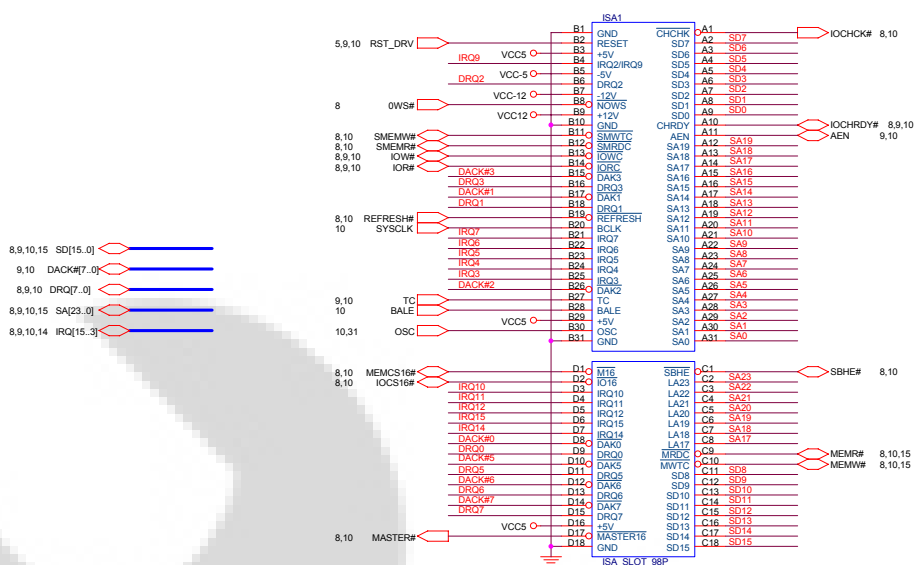
SYSTEM FAN WITH TACHOMETER OUTPUT



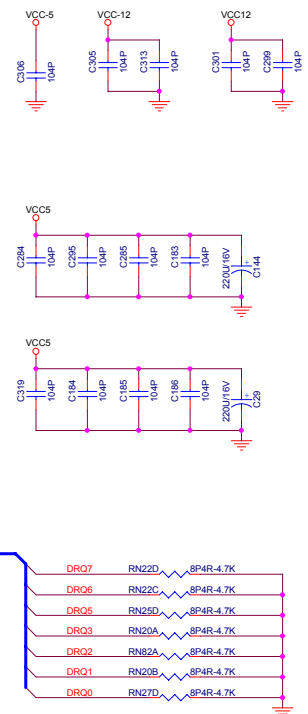
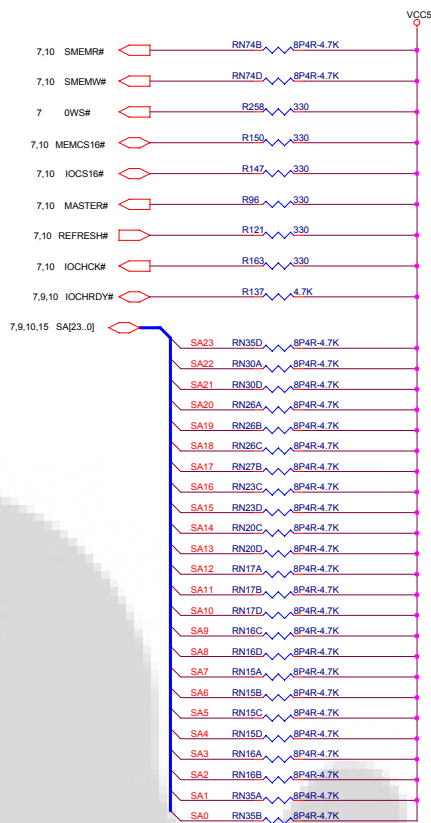
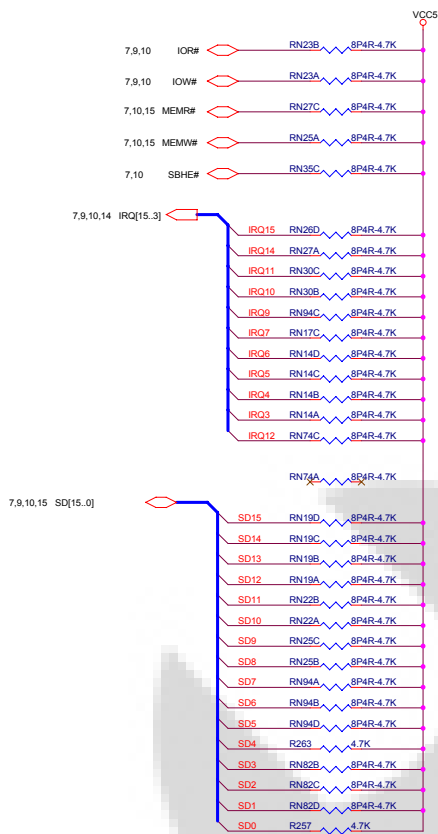
POWER BUTTON



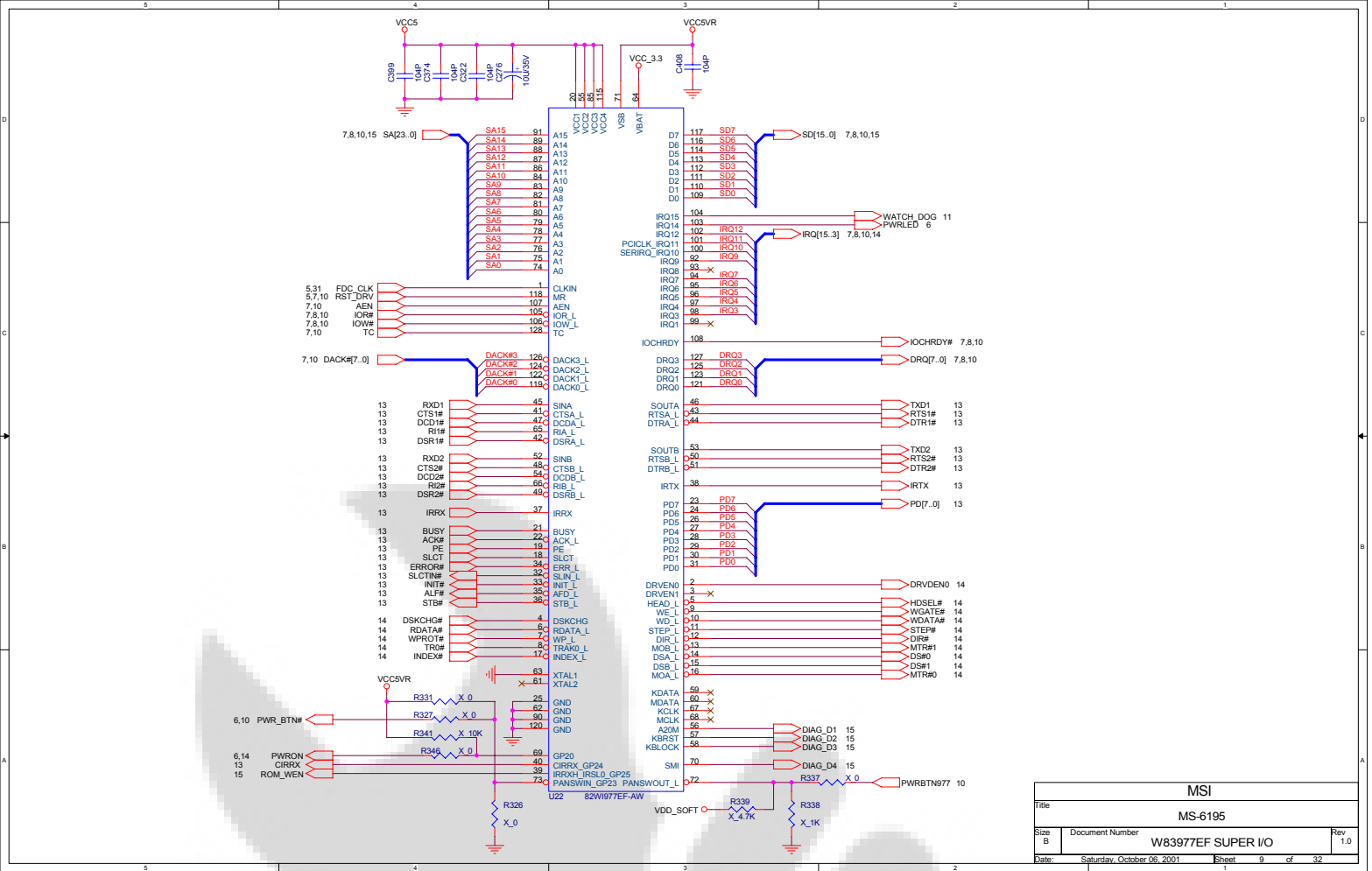
MSI			
Title			
MS-6195			
Size	Document Number	Rev	
B	FRONT PANEL	1.0	
Date:	Saturday, October 06, 2001	Sheet	6 of 32

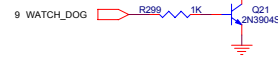
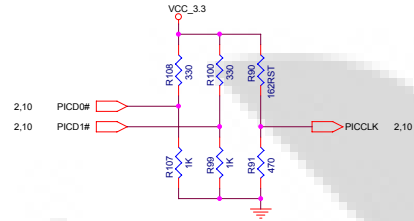
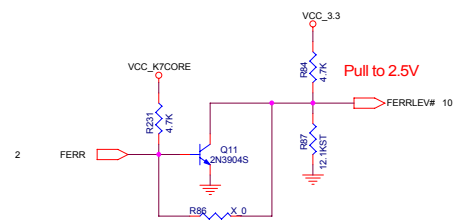
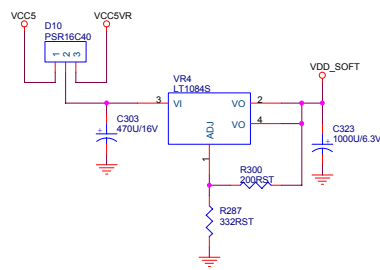


MSI			
Title			
MS-6195			
Size	Document Number		Rev
B	ISA CONNECTOR		1.0
Date	Sheet		of
Saturday, October 06, 2001	7		32

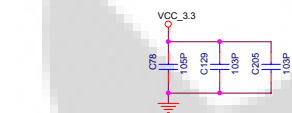
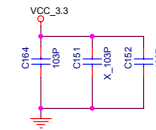


MSI			
Title			
MS-6195			
Size B	Document Number	ISA PULL-UP	
Date	Saturday, October 06, 2001	Sheet	8 of 32
			Rev 1.0

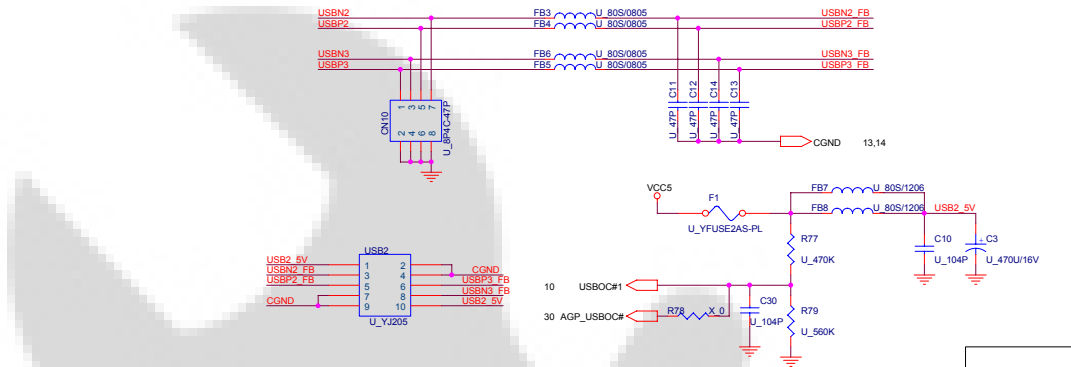




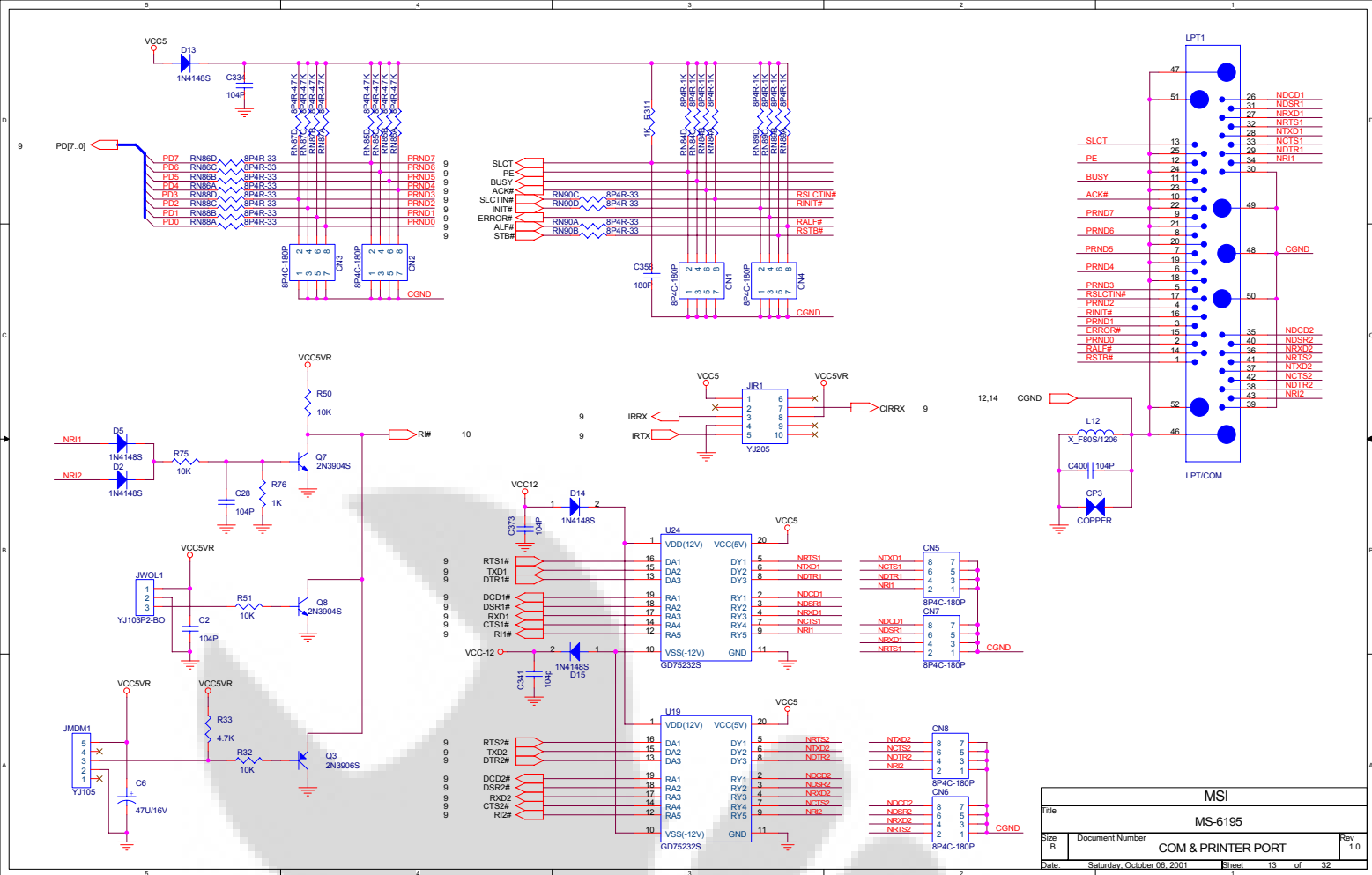
Place around the SB

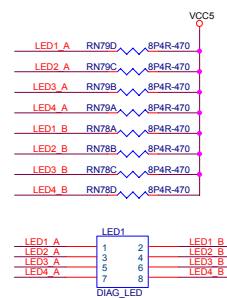
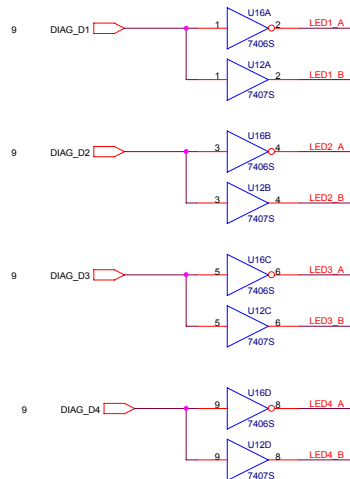
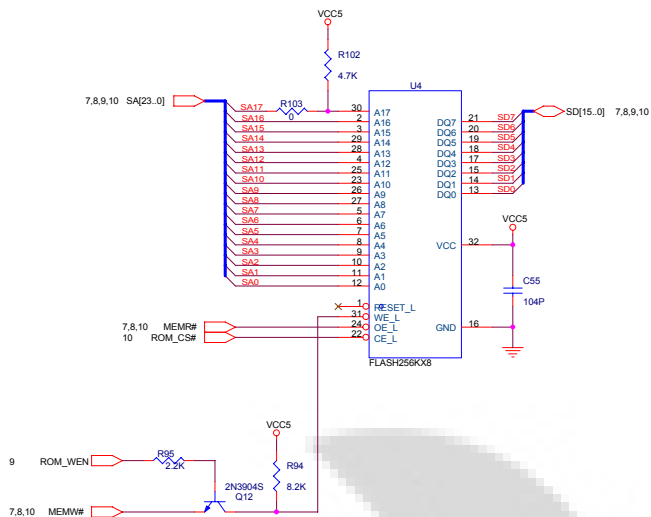


MSI			
Title			
MS-6195			
Size	Document Number	Rev	
B	SB PULL-UP & RESET HEADER	1.0	
Date:	Saturday, October 06, 2001	Sheet	11 of 32

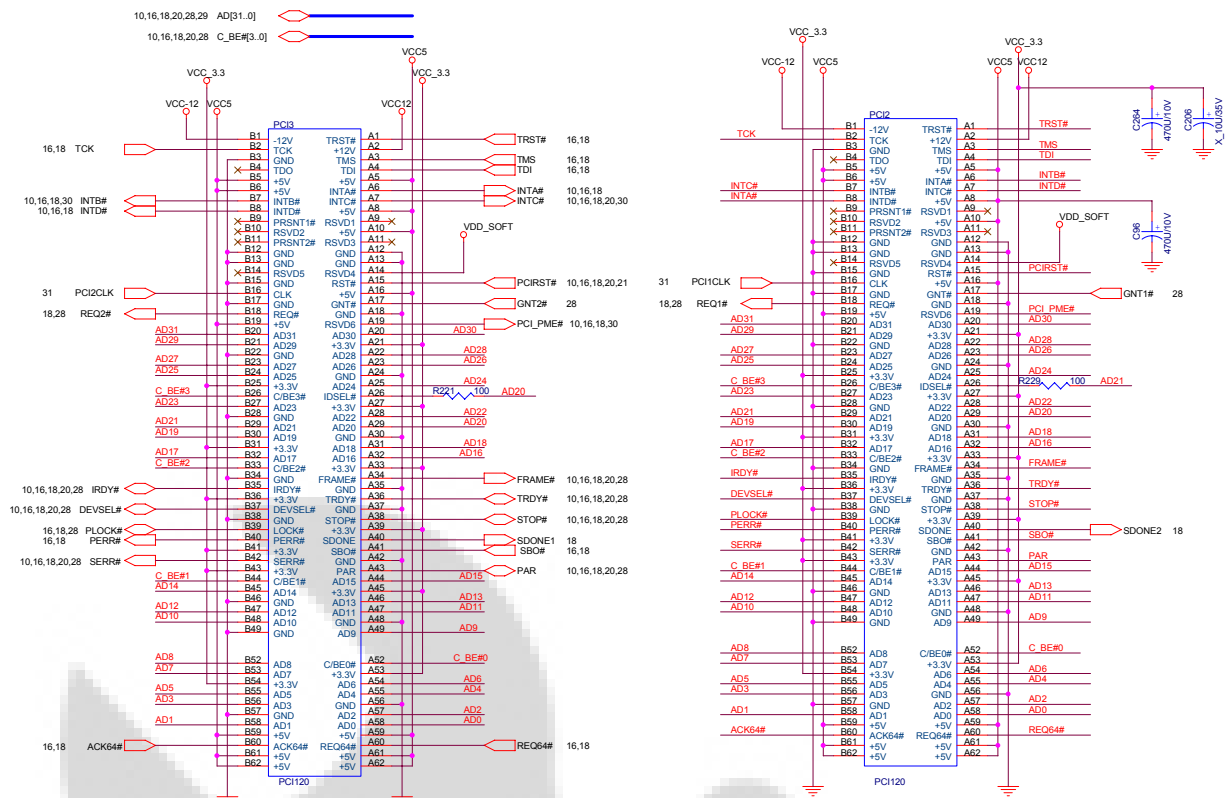


MSI			
Title			
MS-6195			
Size B	Document Number		
	USB CONNECTOR		
	Rev 1.0		
Date:	Saturday, October 06, 2001	Sheet	12 of 32



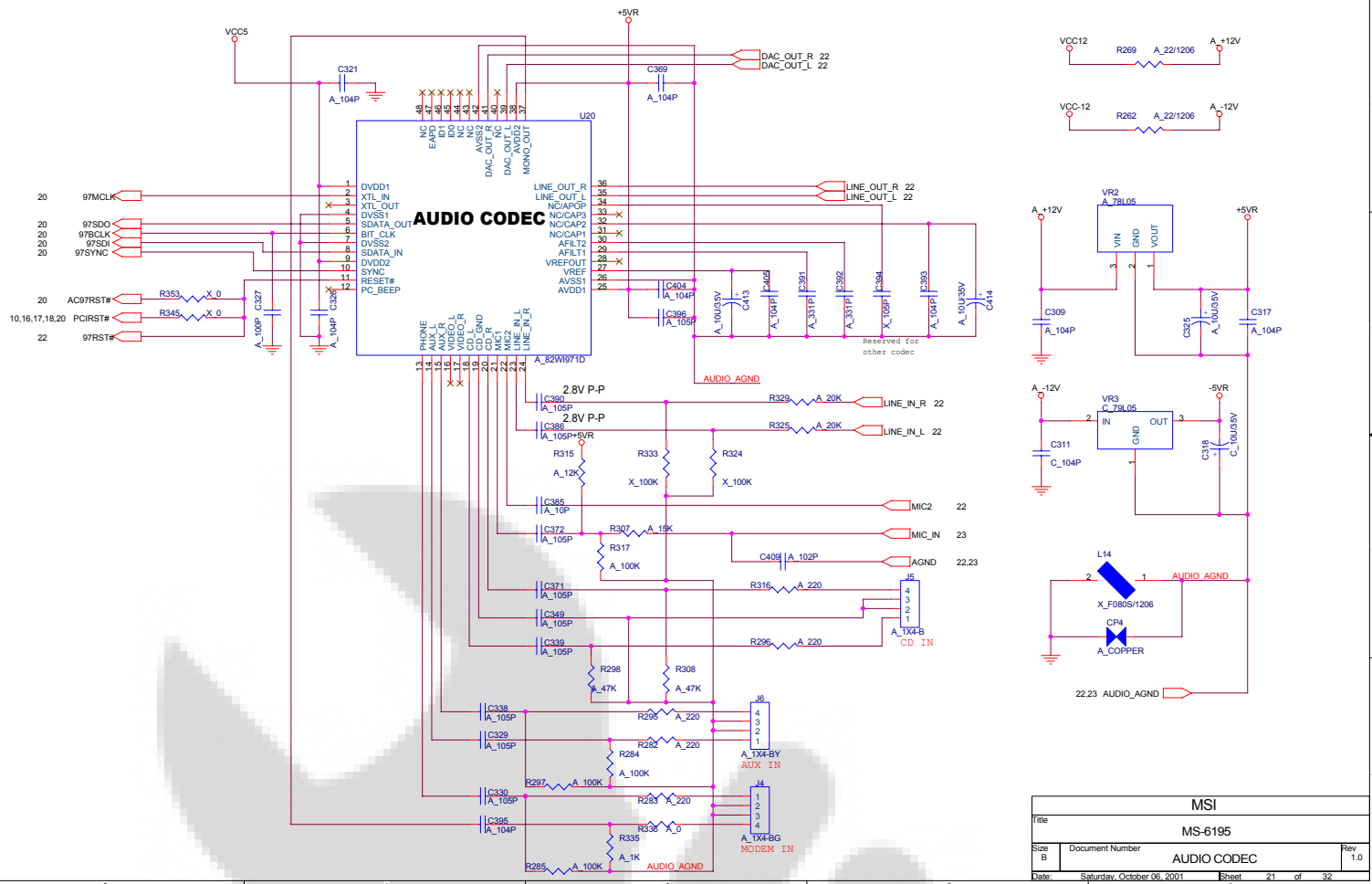


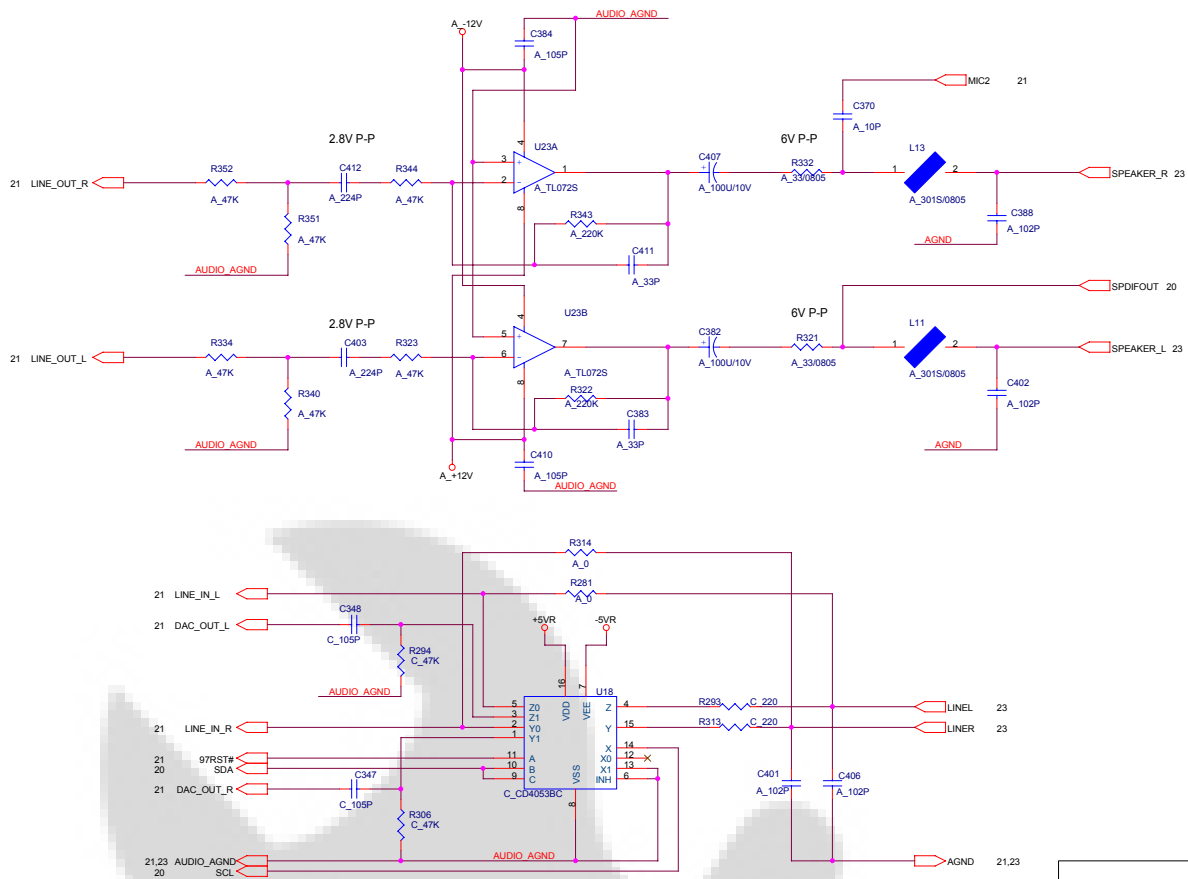
MSI			
Title			
MS-6195			
Size	Document Number	BIOS & DIAGNOSTIC LED	
B			Rev
	Saturday, October 06, 2001	Sheet 15 of 32	1.0



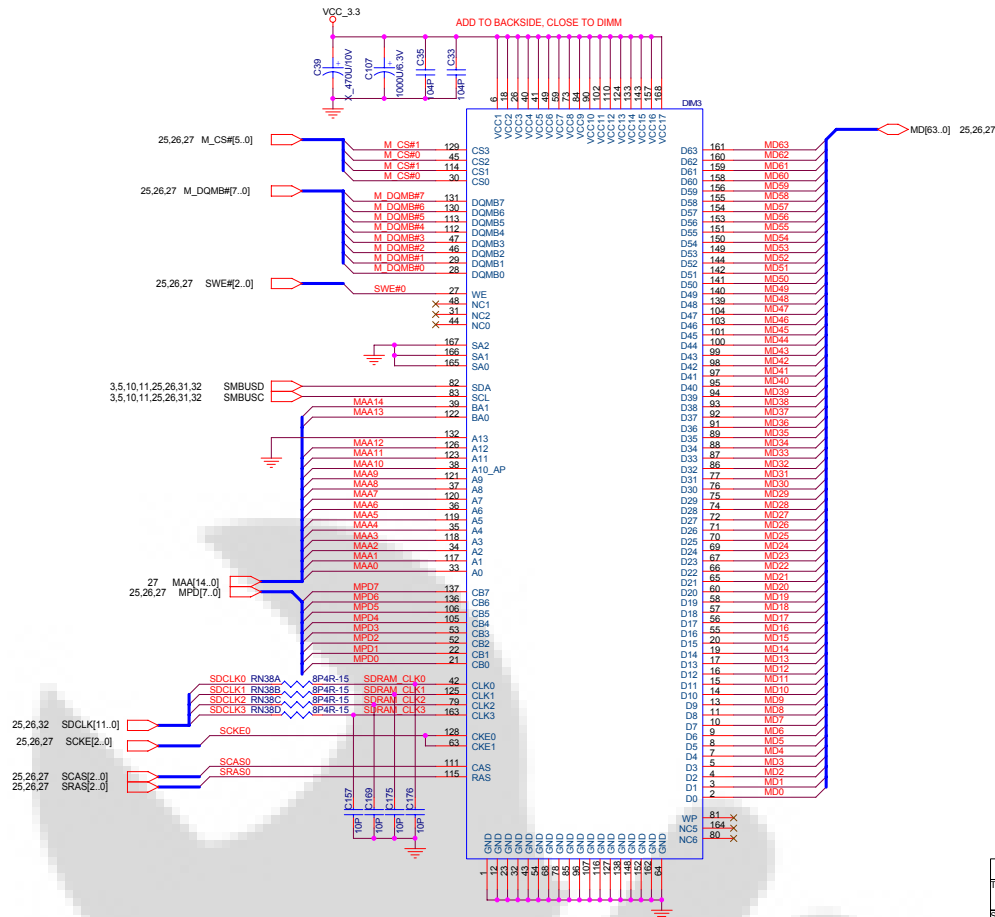
MSI			
MS-6195			
Size B	Document Number	PCI1 & PCI2 CONNECTOR	
			Rev 1.0
Date:	Saturday, October 06, 2001	Sheet	17 of 32

AUDIO CODEC

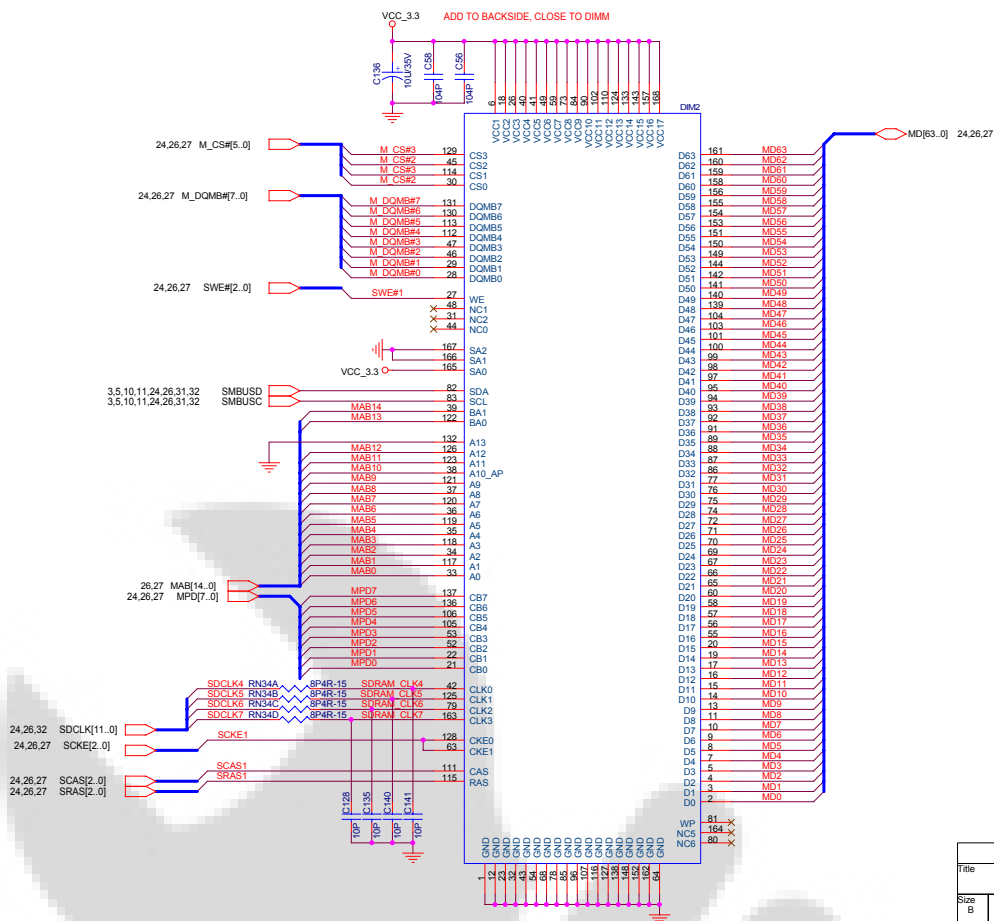




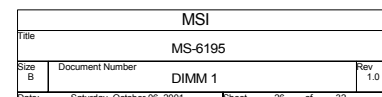
MSI			
Title			
MS-6195			
Size	Document Number	Rev	
B	MS-6195	1.0	
Date:	Saturday, October 06, 2001	Sheet	22 of 32



MSI			
Title			
MS-6195			
Size	Document Number	Rev	
B	DIMM 3	1.0	
Date:	Saturday, October 06, 2001	Sheet	24 of 32

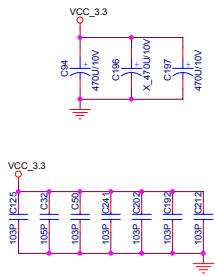


MSI			
Title			
MS-6195			
Size B	Document Number	DIMM 2	
Date	Saturday, October 06, 2001	Sheet	25 of 32
			Rev 1.0





3.3 Bulk decoupling

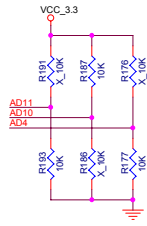


S2K Bus Length Variable Proc AD[11:10]

0b00 - Short non-slotA
0b01 - Single Slot A
0b10 - Reserved
0b11 - Farthest possible Slot A

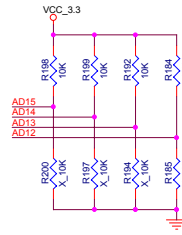
CPU Threshold Range Select for S2k Cells is AD[4]

Low - Threshold sense set to between 0.6V and 1.0V.
High - S2k Threshold sense set to between 1.0V and 1.4V.

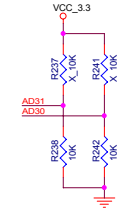


IG S2k driver slew rate AD[15:12]

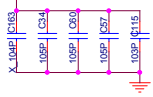
0b0000 - Slowest
0b0001
0b1001 - Preferred
0b1111 - Fastest



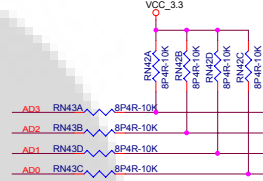
CLK SPEED AD[31:30] SYSCLK Speed:
* L L → 100 Mhz H H → Reserved
L H → 66 Mhz * = DEFAULT
H L → 90 Mhz



VCC_3.3

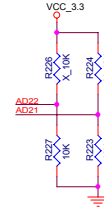


Frequency ID from Slot A [3:0]



CPU Clock Hysteresis of SYSOUTCLKs AD[22:21]

0b00 - No Hysteresis
0b01 - Low hysteresis (preferred setting)
0b10 - Medium Hysteresis
0b11 - Max. Hysteresis



SysClk Threshold AD[28]

LOW - Sense input threshold 0.6V and 1.0V.
HIGH - Sense input threshold 1.0V and 1.4V.



Place these under Irongate
NOPOP ON BOTTOM OF BOARD

MSI			
Title			
MS-6195			
Size	Document Number	Rev	
B	NB PULL-UP	1.0	
Date:	Saturday, October 06, 2001	Sheet	29 of 32

