
MS - 6957

TV-Out Riser Card

User's Guide

Version 1.0
January, 2002
G52-MA00527



FCC-B Radio Frequency Interference Statement

This equipment has been tested and found to comply with the limits for a class B digital device, pursuant to part 15 of the FCC rules. These limits are designed to provide reasonable protection against harmful interference when the equipment is operated in a commercial environment. This equipment generates, uses and can radiate radio frequency energy and, if not installed and used in accordance with the instruction manual, may cause harmful interference to radio communications. Operation of this equipment in a residential area is likely to cause harmful interference, in which case the user will be required to correct the interference at his own expense.

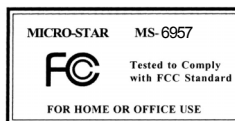
Notice 1

The changes or modifications not expressly approved by the party responsible for compliance could void the user's authority to operate the equipment.

Notice 2

Shielded interface cables and A.C. power cord, if any, must be used in order to comply with the emission limits.

VOIR LA NOTICE D'INSTALLATION AVANT DE RACCORDER AU RESEAU.



FCC Requirement

This equipment complies with Part 68 of the FCC Rules. On the bottom of this equipment is a label that contains, among other information, the FCC registration Number, Ringer Equivalence Number (REN) and USOC jack type for this equipment. You must, upon request, provide this information to your telephone company.

An FCC compliant telephone cord and modular jack is provided with this equipment. This equipment is designed to be connected to the telephone network or premise wiring use a compatible modular jack which is Part 68 compliant. See installation instructions for details.

The REN is useful to determine the quantity of devices you may connect to your telephone line and still have all of those devices ring when your telephone number is called. In most, but not all areas, the sum of the REN of all devices connected to on line should not exceed five (5.0). To be certain of the number of devices you may connect to your line, as determined by the REN, you should contact your local telephone company to determine the maximum REN for your calling area. If your telephone equipment causes harm to the telephone network, the Telephone Company may discontinue your service temporarily. If possible, they will notify you in advance, but if advance notice is not practical, you will be notified as soon as possible. You will be informed of your right to file a complaint with the FCC.

Your telephone company may make changes in its facilities, equipment, operations or procedures that could affect the proper functioning of your equipment. If they do, you will be notified in advance to you an opportunity to maintain uninterrupted telephone service.

If you experience trouble with this telephone equipment, please contact MICRO-STAR INTERNATIONAL for information on obtaining service or repairs. The telephone company may ask that you disconnect this equipment from the network until the problem has been corrected or until you are sure that the equipment is not malfunctioning.

This equipment may not be used on coin service provided by the telephone company. Connection to party lines is subject to stat tariffs.

Copyright Notice

The material in this document is the intellectual property of **MI-CRO-STAR INTERNATIONAL**. We take every care in the preparation of this document, but no guarantee is given as to the correctness of its contents. Our products are under continual improvement and we reserve the right to make changes without notice.

Trademarks

All trademarks used in this manual are the sole property of their respective owners.

VGA is a trademark of International Business Machines Corporation.

Pentium is a registered trademark of Intel Corporation.

Windows is a registered trademark of Microsoft Corporation.

Revision History

Revision	Date
V 1.0	January 2002

Important Safety Precautions

Always read and follow these basic safety precautions carefully when handling any piece of electronic component.

1. Keep this User's Manual for future reference.
 2. Keep this equipment away from humidity.
 3. Lay this equipment on a reliable flat surface before setting it up.
 4. The openings on the enclosure are for air convection hence protects the equipment from overheating.
 5. Make sure the voltage of the power source and adjust properly 110/220V before connecting the equipment to the power inlet.
 6. Place the power cord such a way that people can not step on it. Do not place anything over the power cord.
 7. Always Unplug the Power Cord before inserting any add-on card or module.
 8. All cautions and warnings on the equipment should be noted.
 9. Never pour any liquid into the opening that could damage or cause electrical shock.
 10. If any of the following situations arises, get the equipment checked by a service personnel:
 - ❗ The power cord or plug is damaged
 - ❗ Liquid has penetrated into the equipment
 - ❗ The equipment has been exposed to moisture
 - ❗ The equipment has not work well or you can not get it work according to User's Manual
 - ❗ The equipment has dropped and damaged
 - ❗ If the equipment has obvious sign of breakage
 11. DO NOT LEAVE THIS EQUIPMENT IN AN ENVIRONMENT UNCONDITIONED, STORAGE TEMPERATURE ABOVE 60°C (140°F), IT MAY DAMAGE THE EQUIPMENT.
-

Table of Contents

Chapter 1 Introduction	1
1.1 TV-Out Riser Card	1
1.2 Video Encoder Chipset	1
1.3 Package Content	2
1.4 System Requirements	2
1.5 TV-Out Riser Card Layout	3
1.6 TV-Out Connector (C)	3
1.7 TV-Out Connector (S)	4
 Chapter 2 Installation	 5
2.1 Card Installation	5
2.2 Cable Wiring	7
 Chapter 3 Display Settings	 10
3.1 Settings under Windows® 98/ME	10
3.2 Settings under Windows® 2000/XP	12
 Chapter 4 BIOS Settings	 15
4.1 Entering the BIOS	15
4.2 Control Keys	15
4.3 Setting the BIOS	16

1. Introduction

1.1 TV-Out Riser Card

The TV-Out Riser card provides the best solution for users who want to shift the screen to an external video equipment, such as overhead projector or TV. The output cable used can be either S-Video or composite cable because these two types of connectors are embedded on card. You can enjoy the delicate image without any flickering through the AGP(Acceleration Graphic Port) interface.

1.2 Video Encoder Chipset

SiS301DH integrates video encoder which supports NTSC/PAL and HiVision TV format. The output signal formats for NTSC/PAL system can be composite, S-video(Y/C), or RGB-component. The output signal format for HiVision TV is YUV-component output.

The display on TV can be under-scan or over-scan mode. This function is supported by a flexible horizontal/vertical hardware scaling capability. The scaling factor is programmable. The maximum source resolution can be 800x600 for both NTSC and PAL.

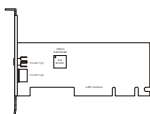
The Y/C filter implemented can reduce the cross-color and cross-luminance intervention.

The display at TV can be simultaneous and independent of the CRT output of primary VGA. When supporting TV display, SiS301DH works at master mode. SiS301 DH outputs the pixel clock, horizontal sync and vertical sync to primary VGA.

1.3 Package Content

Unpack the package and check all the items carefully. If any item contained is damaged or missing, please contact your local dealer as soon as possible. Also, keep the box and packing materials in case you need to ship the unit in the future.

Your TV-Out Riser card package should contain the following items:



TV-Out Riser
Card



User's Manual



S-Video Cable / RCA cable

1.4 System Requirements

Mainboard



Supported by SiS®
SiS 650 chipset

(Refer to your Mainboard manual and driver)

Expansion Slot



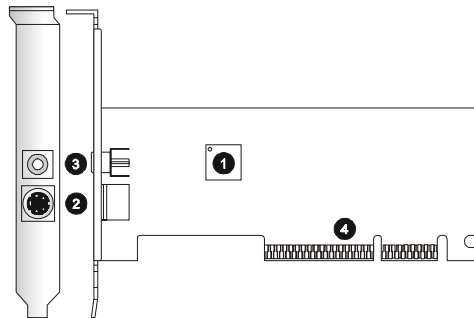
AGP slot

Operating System



Windows® 98/ME/NT/2000/XP

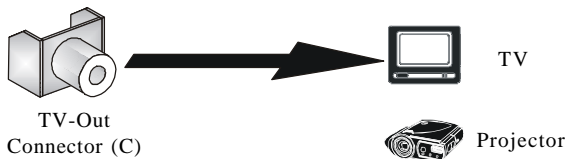
1.5 TV-Out Riser Card Layout



- | | |
|-------------------------|------------------------|
| ❶ Video Encoder Chipset | ❸ TV-Out Connector (C) |
| ❷ TV-Out Connector (S) | ❹ AGP Interface |

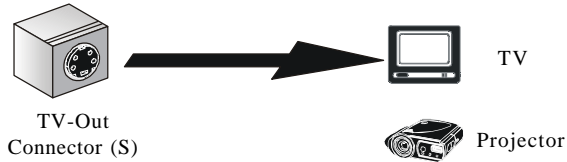
1.6 TV-Out Connector (C)

The TV-Out Riser Card provides a TV-Out connector for video-out function which allows you to output the image to a TV or video device. Simply plug one end of the RCA cable into the TV-Out connector on the TV-Out Riser Card, and the other end to the video input connector on your TV or video device. Most TVs and video devices support such kind of input connector. For the correct connection, please refer to the TVs and video devices' manuals for more information.



1.7 TV-Out Connector (S)

The TV-Out Riser Card provides a TV-Out connector for video-out function which allows you to output the image to a TV or video device. Simply plug one end of the S-Video cable into the TV-Out connector on the TV-Out Riser Card, and the other end to the video input connector on your TV or video device. Some TVs and video devices may support such kind of input connector. For the correct connection, please refer to the TVs and video devices' manuals for more information.



2. Installation

This chapter is divided into two parts: *Card Installation* and *Cable Wiring*.

Each installation procedure comes with a drawing and instruction. Follow the instruction step by step to finish installation.

2.1 Card Installation

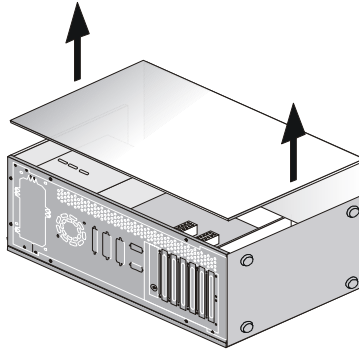
1. Follow the Windows shut down procedure to turn off your computer.



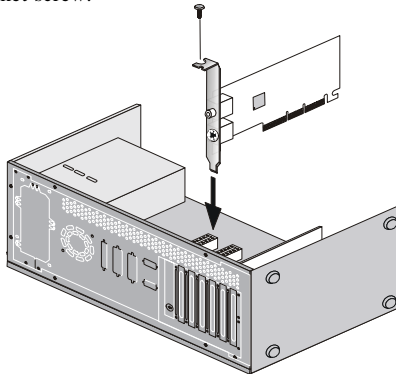
Warning: Always remember to turn the system power off before installing or removing hardwares to or from your computer. Neither the manufacturer nor the agent is responsible for damages if the user ignores this warning!!!



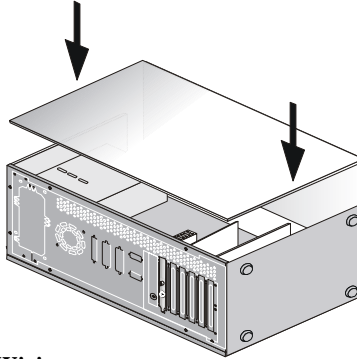
2. Remove the case of your computer.



3. Put the card directly over the AGP slot and press one end of the card into the slot first. Gently but firmly press the other end until it is fully seated in the slot. Secure the card with a bracket screw.



4. Replace the case.

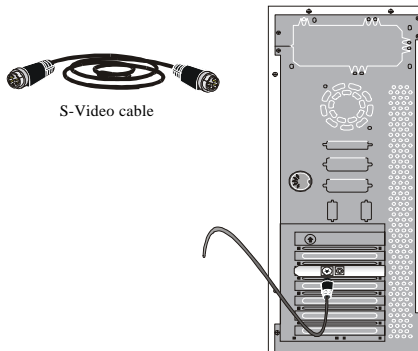


2.2 Cable Wiring

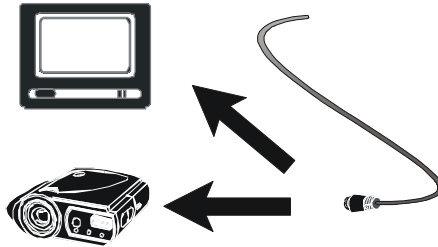
Both of the usages of the S-Video and RCA cables will be introduced.

Wiring with S-Video cable

1. Connect one end of the S-Video cable to the TV-Out(S) connector.



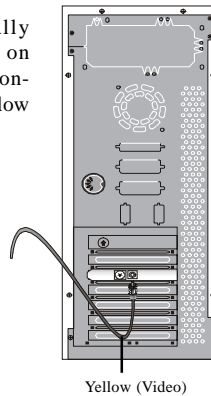
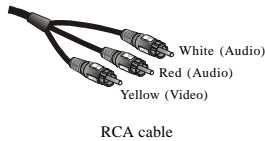
2. Connect the other end of the S-Video cable to the TV or projector.



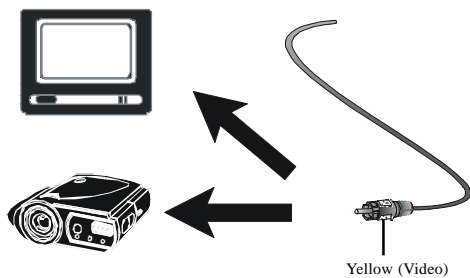
Wiring with RCA cable

1. Connect one end of the RCA cable to the TV-Out(C) connector.

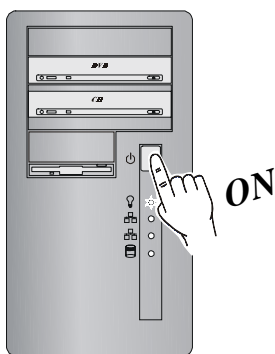
Note: The RCA cable usually comes with three connectors on both ends. The white or red connector is for audio while the yellow one is for video.



2. Connect the other end of the RCA cable to the TV or projector.



You can restart your computer now.




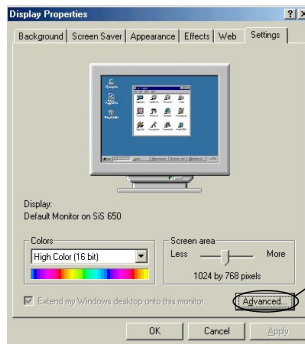
3. Display Settings

This chapter is divided into two parts for the settings under different operating systems may vary.

3.1 Settings under Windows® 98/ME

When you restart the Windows®, the screen will still be shown on the monitor. You can enter the display properties window to shift the display setting.

1. To open the **Display Properties** window, click the Start button , and then point to **Settings**. Point to the folder that contains **Control Panel**, and then click **Control Panel**. In Control Panel, double-click the **Display** icon. Also, you may simply right-click the blank Windows® desktop area and choose **Properties** in the pop-up menu. The **Display Properties** window below will show on your screen:

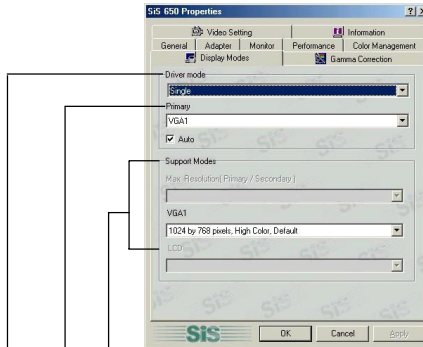


Click here



Note: The figures in this section are for reference only. The actual information on the Display Properties window may vary in operating systems.

2. Click **Advanced** then click the **Display Modes** tab, the window will show as below:



General speaking, the resolution of the TV is lower than that of the monitor. We recommend that you lower the resolution of your VGA to match with your TV when you are in the multimonitor mode. 640 x 480 resolution is advised.

In the single mode, you can set the screen to show on the monitor or TV. In the multimonitor mode, this sheet will be divided into two parts, **Primary** and **Secondary**, in which you can set the main desktop to show on the monitor or TV.

Single: The screen will be shown on your monitor or TV. You can shift the screen to show between the monitor and TV by the setting in the **Primary** sheet.

Mirror: The screen will be shown both on your monitor and TV.


Multimonitor: The main desktop will be shown on the monitor while the expended on the TV or vice versa, depending on the setting in the **Primary** sheet.



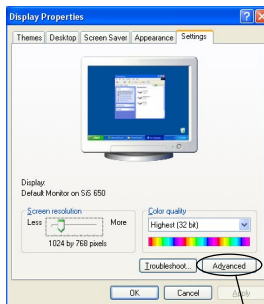
Note: If the screen shown on the TV is monochrome, please change the TV system setting in the BIOS to meet your TV. Refer to Chapter 4 BIOS Settings for detailed setting.

3.2 Settings under Windows® 2000/XP

When you restart the Windows®, the screen will still be shown on the monitor. You can enter the display properties window to shift the display setting.

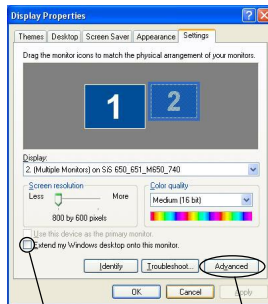
1. To open the **Display Properties** window, click the Start button , and then point to **Settings**. Point to the folder that contains **Control Panel**, and then click **Control Panel**. In Control Panel, double-click the **Display** icon. Also, you may simply right-click the blank Windows® desktop area and choose **Properties** in the pop-up menu. The **Display Properties** window below will show on your screen:

Under Windows® 2000



Click here

Under Windows® XP

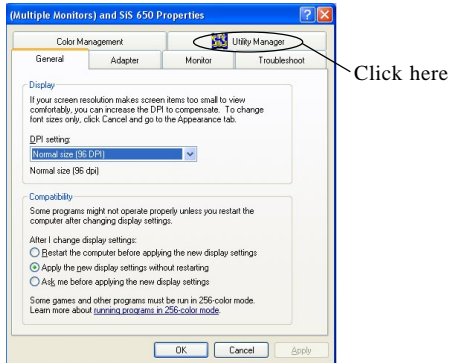
Click here to
enable desktop
extension

Click here

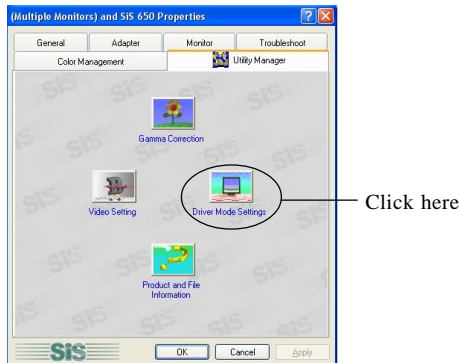


Note: The figures in this section are for reference only. The actual information on the Display Properties window may vary in operating systems.

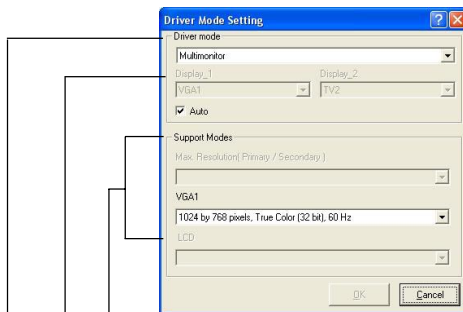
2. Click the **Advanced**, the window will show as below:



3. Click the **Utilities Manager**, the window will show as below:



4. Click **Driver Mode Setting**, the window will show as below:



General speaking, the resolution of the TV is lower than that of the monitor. We recommend that you lower the resolution of your VGA to match with your TV when you are in the multimonitor mode. 640 x 480 resolution is advised.

In the single mode, you can set the screen to show on the monitor or TV. In the multimonitor mode, this sheet will be divided into two parts, **Primary** and **Secondary**, in which you can set the main desktop to show on the monitor or TV. If you cannot enter this setting even under multimonitor mode, please go back to the **Display Properties** window to enable this setting.

Single: The screen will be shown on your monitor or TV. You can shift the screen to show between the monitor and TV by the setting in the **Primary** sheet.

Mirror: The screen will be shown both on your monitor and TV.

Multimonitor: The main desktop will be shown on the monitor while the expended on the TV or vice versa, depending on the setting in the **Primary** sheet. (Not supported in Windows® 2000)



Note: If the screen shown on the TV is monochrome, please change the TV system setting in the BIOS to meet your TV. Refer to Chapter 4 BIOS Settings for detailed setting.

4. BIOS Settings

If your TV is NTSC system, the screen shown on the TV will be monochrome. Please change the TV system setting in the BIOS to meet your TV, and vice versa.

4.1 Entering the BIOS

Power on the computer and the system will start POST (Power On Self Test) process. When the message below appears on the screen, press key to enter Setup.

Press DEL to enter SETUP

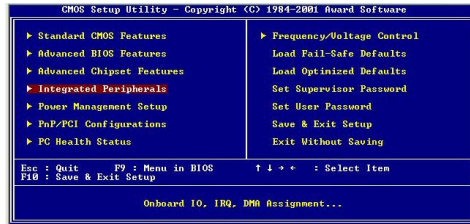
If the message disappears before you respond and you still wish to enter Setup, restart the system by turning it OFF and On or pressing the RESET button. You may also restart the system by simultaneously pressing <Ctrl>, <Alt>, and <Delete> keys.

4.2 Control Keys

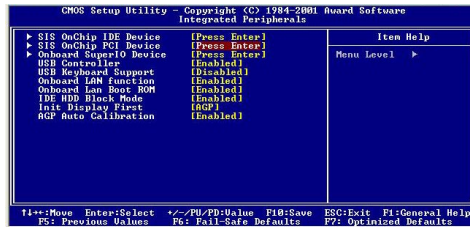
<↑>	Move to the previous item
<↓>	Move to the next item
<←>	Move to the item in the left hand
<→>	Move to the item in the right hand
<Enter>	Select the item
<Esc>	Jumps to the Exit menu or returns to the main menu from a submenu
<+/PU>	Increase the numeric value or make changes
<-./PD>	Decrease the numeric value or make changes
<F1>	General help, only for Status Page Setup Menu and Option Page Setup Menu
<F5>	Restore the previous CMOS value from CMOS, only for Option Page Setup Menu
<F6>	Load the default CMOS value from Fail-Safe default table, only for Option Page Setup Menu
<F7>	Load Optimized defaults
<F10>	Save all the CMOS changes and exit

4.3 Setting the BIOS

1. Select **Integrated Peripherals** then press <Enter>.



2. Select **SIS OnChip PCI Device** then press <Enter>.



3. Select **TV System** and press <+/PU> or <+/PU> to switch the settings between PAL and NTSC. Press <Esc> to exit then save the changing.

