

WaveFront™ Sounds (4M bit CMOS Mask ROM)

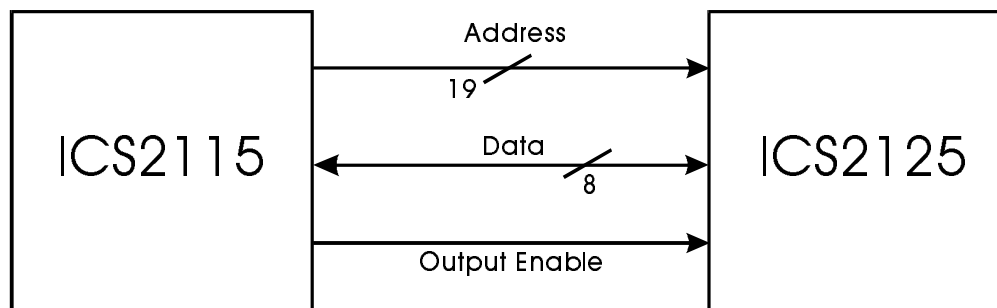
General Description

WaveFront Sounds are masked ROMs that serve as the wavetable for the ICS2115 WaveFront Synthesizer. Three different sounds sets are available: 4 MB (ICS2124-001 and ICS2124-002), 2 MB (ICS2122) and 512 KB (ICS2125). Each sound set contains the musical data needed to synthesize instruments from the General MIDI specification. The 512 KB sound set consists of one 512 KB ROM.

Features

- Full featured set of General MIDI sounds.
- Available in three sizes, 4 MB, 2 MB, and 512 KB to provide the optimal balance between price and performance for many applications.
- Uses 512K Word X 8 bit ROM in a 32-pin SOP package.

Block Diagram

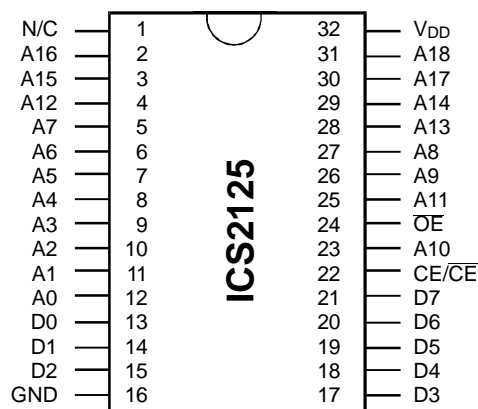


512K Patch Set



ICS2125

Pin Configuration



32-Pin SOP

Pin Descriptions

PIN NUMBER	PIN NAME	TYPE	DESCRIPTION
2-12, 23, 25-31	A0 through A18	I	Address Inputs
13-15, 17-21	D0 through D7	O	Data Outputs
24	\overline{OE}	I	Output Enable Input
22	\overline{CE}	I	Chip Enable Input
32	V _{DD}	P	Power Supply
16	GND	P	Ground
1	N.C.	-	No Connection



Absolute Maximum Ratings

SYMBOL	ITEM	RATING	UNIT
V _{DD}	Power Supply Voltage	-0.5-7.0	V
V _{IN}	Input Voltage	-0.5-V _{DD}	V
V _{OUT}	Output Voltage	0 - V _{DD}	V
P _D	Power Dissipation	1.0/0.6	W
T _{STG}	Storage Temperature	-55 to 150	°C
T _{OPR}	Operating Temperature	0 - 70	°C
T _{SOLDER}	Soldering Temperature - Time	260 - 10	°C - sec

Stresses above those listed under Absolute Maximum Ratings may cause permanent damage to the device. This is a stress rating only and functional operation of the device at these or any other conditions above those indicated in the operational sections of the specifications is not implied. Exposure to absolute maximum rating conditions for extended periods may affect product reliability.

AC Characteristics

T_A = 0~70°C, V_{DD}=5±10%

PARAMETER	SYMBOL	MIN	TYP	MAX	UNITS
Cycle Time	t _{CYC}	150	-	-	ns
Address Access Time	t _{ACC}	-	-	150	ns
Chip Enable Access Time	t _{CE}	-	-	150	ns
Output Enable Access Time	t _{OE}	-	-	70	ns
Output Disable Time from $\overline{\text{CE}}$	t _{CED}	-	-	40	ns
Output Disable Time from $\overline{\text{OE}}$	t _{OED}	-	-	40	ns
Output Hold Time	t _{OH}	5	-	-	ns

AC Test Conditions

Output Load: 100pF + 1TTL

Input Levels: 0.6V, 2.4V

Timing Measurement Reference Levels/Input: 0.8V, 2.2V

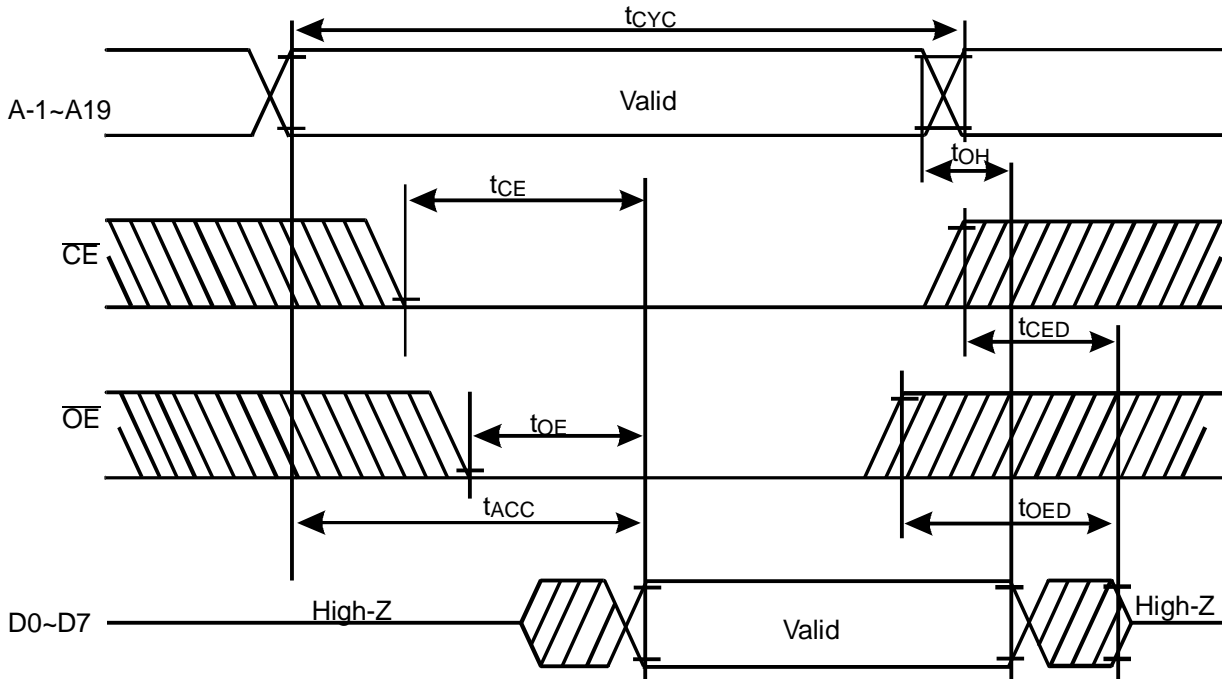
Timing Measurement Reference Levels/Output: 0.8V, 2.0V

Input Rise and Fall Time: 5ns

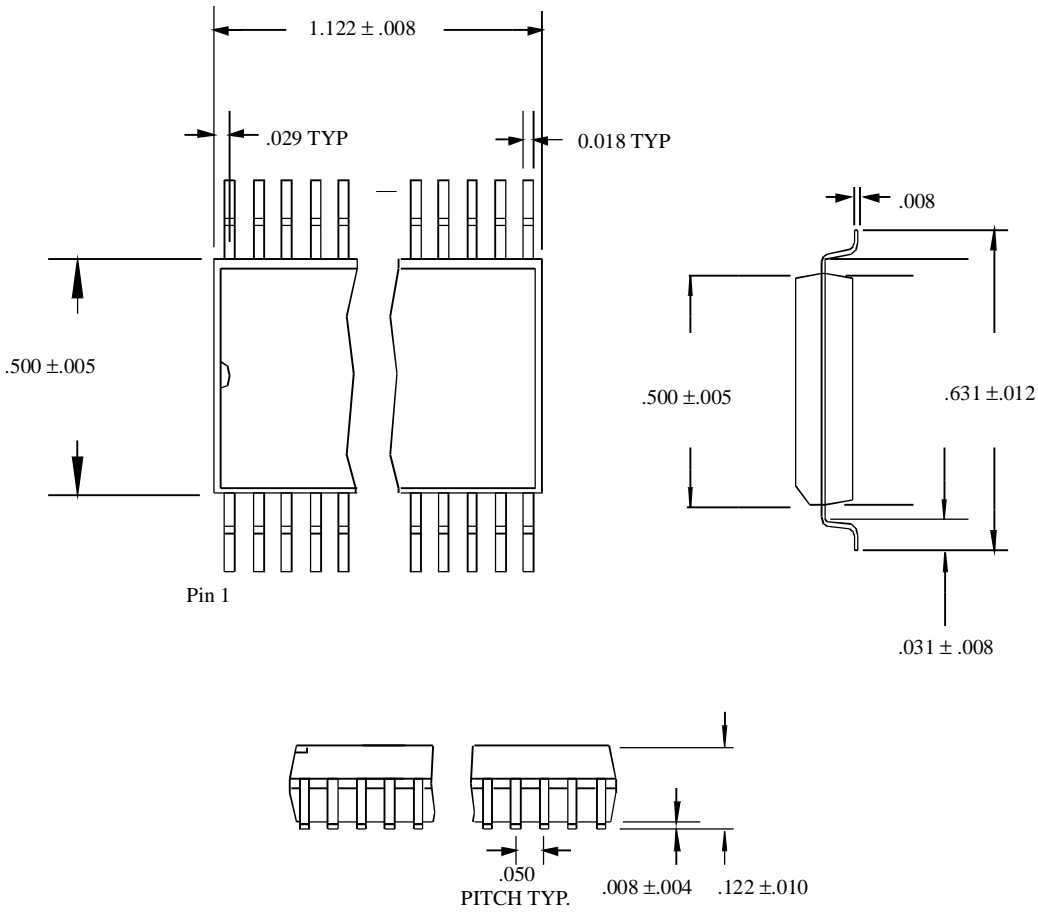


Timing Diagram

BYTE-WIDE READ MODE



Note: $\overline{BYTE} = V_{IL}$



Ordering Information

ICS2125M

Example:

ICS XXXX M

Package Type
M=SOIC, SOP

Device Type (consists of 3 or 4 digit numbers)

Prefix

ICS, AV=Standard Device; GSP=Genlock Device

PRODUCT PREVIEW documents contain information on products in the formative or design phase of development. Characteristic data and other specifications are design goals. ICS reserves the right to change or discontinue these products without notice.