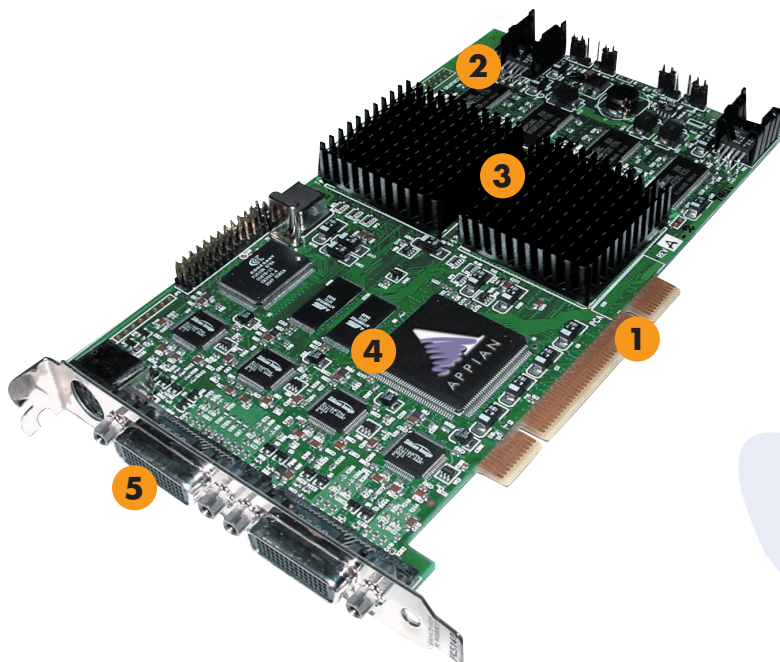


APPIANX™

Appian's most powerful Xtended Desktop Solution



- 1** Extend your desktop from one AGP or PCI slot
- 2** Up to 64 MB SDRAM
- 3** One or two AppianAGX™ multi-display graphics accelerators
- 4** DirectX®, DirectDraw™, Direct3D™ and OpenGL® support across displays
- 5** Integrated DVI support

Big ideas need room.

The AppianX™ is a workstation-performance graphics card designed for bankers, traders, video editors, and anyone else who needs an extended-desktop solution.

The complete extended desktop solution.

Appian provides it all: high-performance graphics cards, time-saving HydraVision™ software and worldwide support. And only Appian offers AppianXtras™—a suite of multi-display specialty tools which allow you to see more and do more.

Don't sacrifice slot space.

The AppianX allows you to power up to four displays from a single slot, leaving you room for other professional hardware. One or two AppianAGX™ multi-monitor graphics accelerators offer impressive 2D and 3D capabilities.



The AppianX has integrated DVI support, so you can connect up to four digital or analog displays to your system using a single slot.

Full Windows® compatibility.

The AppianAGX graphics accelerator is the only multi-display processor on the market that is recognized as a multi-function device by Windows, so you will enjoy the best possible performance.

Powerful desktop management.

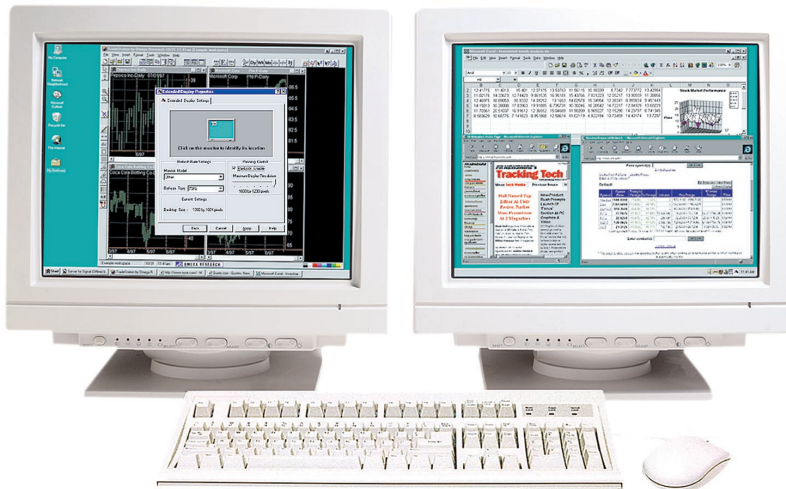
Appian's HydraVision software lets you define the placement of windows and dialog boxes to manage information across your extended desktop. Hot key shortcuts and other time-saving features help you work more productively.

Recognized leader.

Because Appian is the leading provider of extended desktop solutions, major PC manufacturers like Compaq, Dell, Hewlett-Packard and IBM offer Appian solutions to their customers.

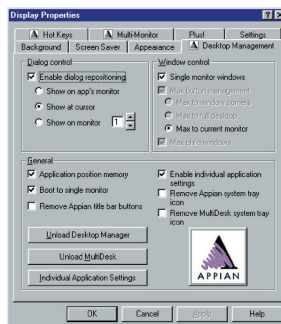
APPIANX™

The AppianX is just one of Appian's Xtended Desktop Solutions. The Appian Traveler™ delivers extended desktop technology to laptop users.



AppianX Technology Benefits

- One or two AppianAGX graphics accelerators, with integrated, independent 330 MHz RAMDACs, provide impressive 2D and 3D acceleration across multiple displays
- Support for hardware accelerated DirectX and OpenGL
- AGP 2X, AGP 4X, PCI
- Native Windows 2000 multi-function device support
- DDC support gives you plug-and-play power
- Includes HydraVision software for quick and easy extended desktop management
- Supports different resolutions and refresh rates per display



Appian's HydraVision software allows you to arrange application windows anywhere you want across displays. You can change resolutions, control message placement, arrange your desktop and more.

Specifications

Resolution and refresh rates (Hz)

		Color bit depth		
		32 bpp	16 bpp	8 bpp
1900 x 1200*	60		60, 75, 85	60, 75, 85
1900 x 1080*	60		60, 75, 85	60, 75, 85
1600 x 1200*	60, 75		60, 75, 85	60, 75, 85
1280 x 1024	60, 75, 85		60, 75, 85	60, 75, 85
1024 x 768	60, 75, 85		60, 75, 85	60, 75, 85
800 x 600	60, 75, 85		60, 75, 85	60, 75, 85
600 x 480	60, 75, 85		60, 75, 85	60, 75, 85

*analog supported modes only

Video

- Video-in of NTSC and PAL (4-port)
- Optional Appian TV Tuner
- Hardware accelerated DirectX across multiple monitors with AppianDX
- Hardware accelerated OpenGL across multiple monitors with HydraThread

Memory

- Up to 64MB SDRAM

Software Support

- Windows 98, ME, NT 4.0 and 2000
- DirectX, Direct3D, DirectDraw
- Multi-board support

System Requirements

- x86 host compliant with PCI spec 2.1+
- x86 host compliant with AGP spec 2.0+



APPIAN GRAPHICS
18005 NE 68th STREET
SUITE A-120
REDMOND, WA 98052
USA

APPIAN GRAPHICS, LTD.
WELLINGTON BUILDING
28-32 WELLINGTON ROAD
ST. JOHN'S WOOD
LONDON NW8 9SP
UNITED KINGDOM

FOR MORE INFORMATION
1-800-7-APPIAN for USA/Canada Sales
+44 (0)20 7483-9090 for Europe/Middle East/Africa Sales
+1-425-882-4561 for all other markets
info@appian.com

Due to continuing development efforts, Appian reserves the right to change specifications without notice. Appian Graphics is a registered trademark of Appian Graphics Corp. Appian Jeronimo, Appian Gemini, AppianXtras, and HydraVision are trademarks of Appian Graphics Corp. Appian software programs and Appian hardware devices are covered by one or more of the following U.S. patents: 5,835,090; 5,848,294; 5,949,437. Additional patents are pending. Microsoft, the Windows logo and Windows NT are registered trademarks of Microsoft Corporation. All other trademarks are the property of their respective companies.