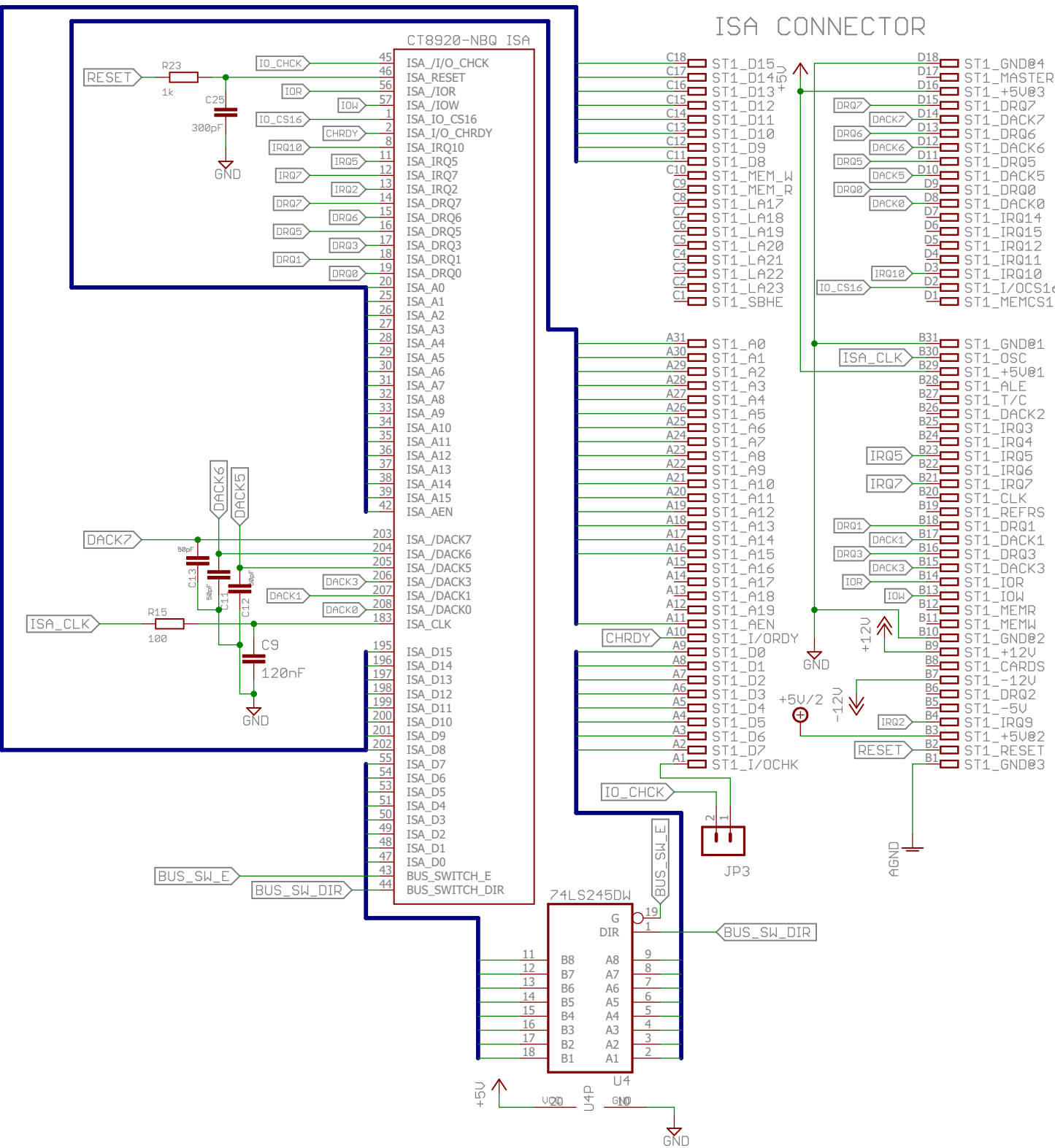
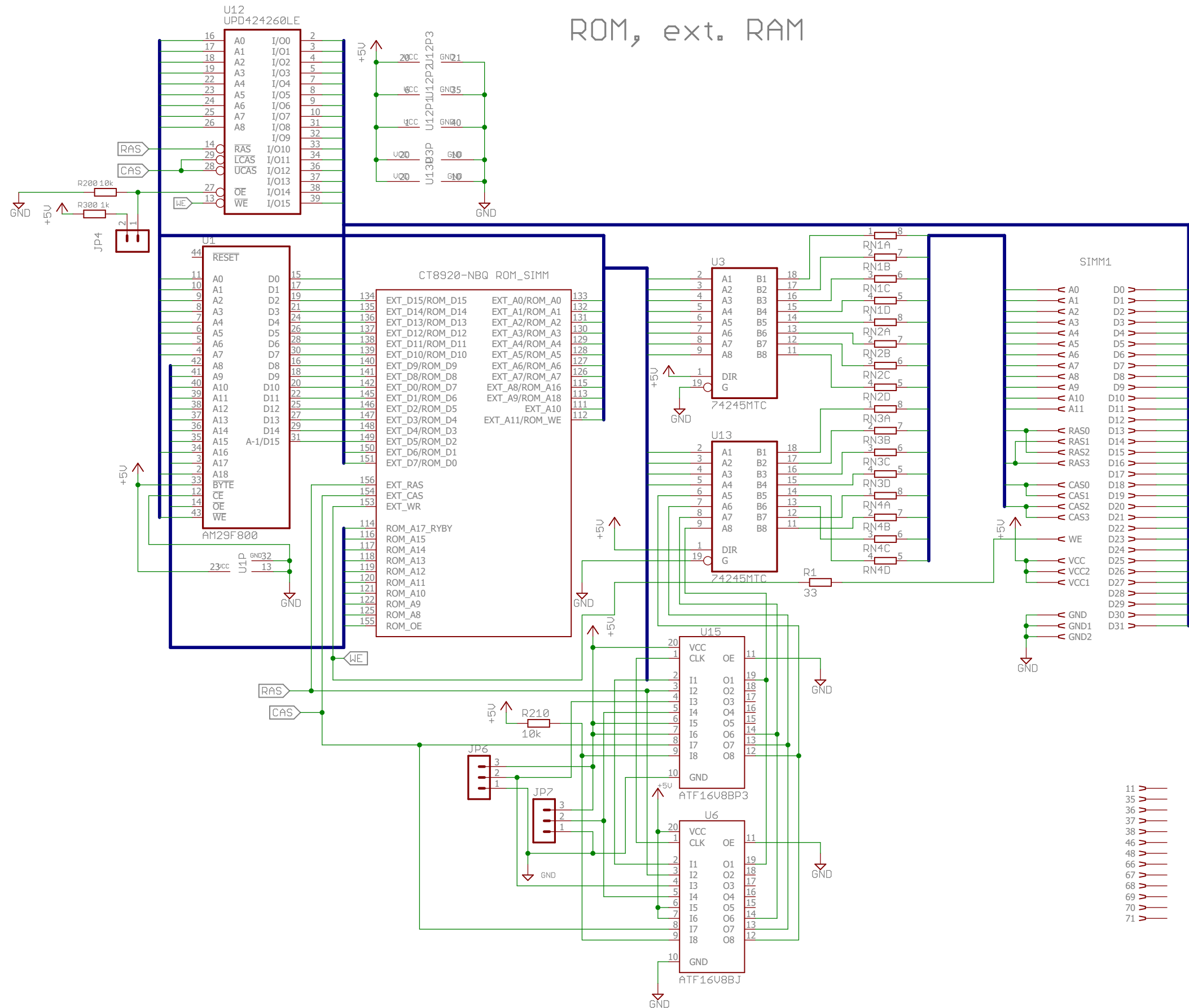


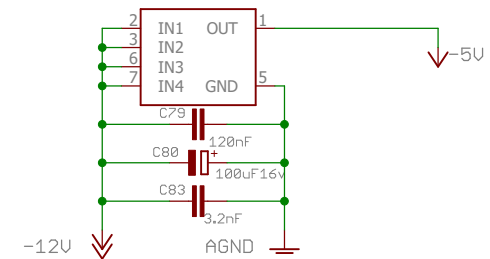
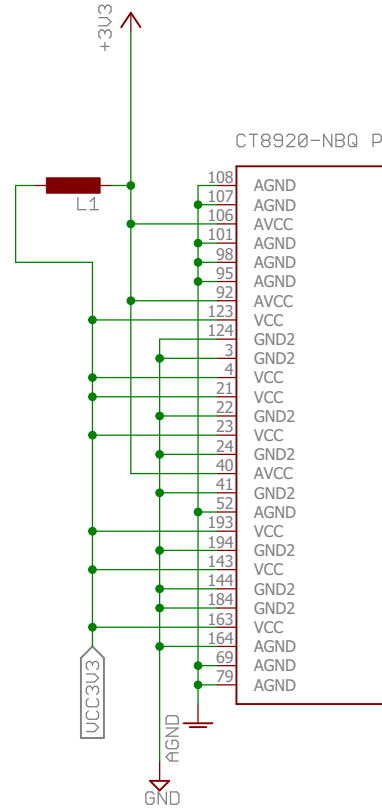
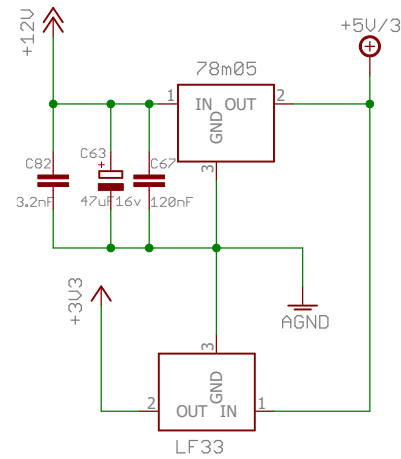
ISA bus



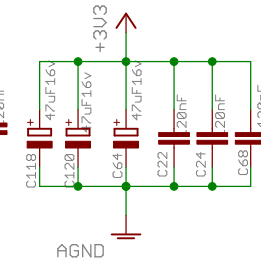
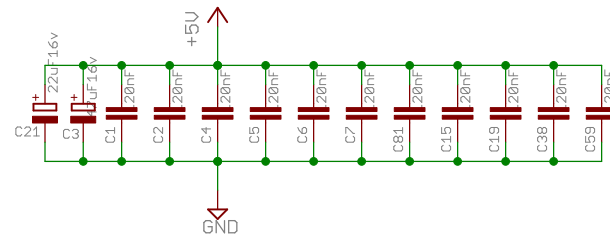
ROM, ext. RAM



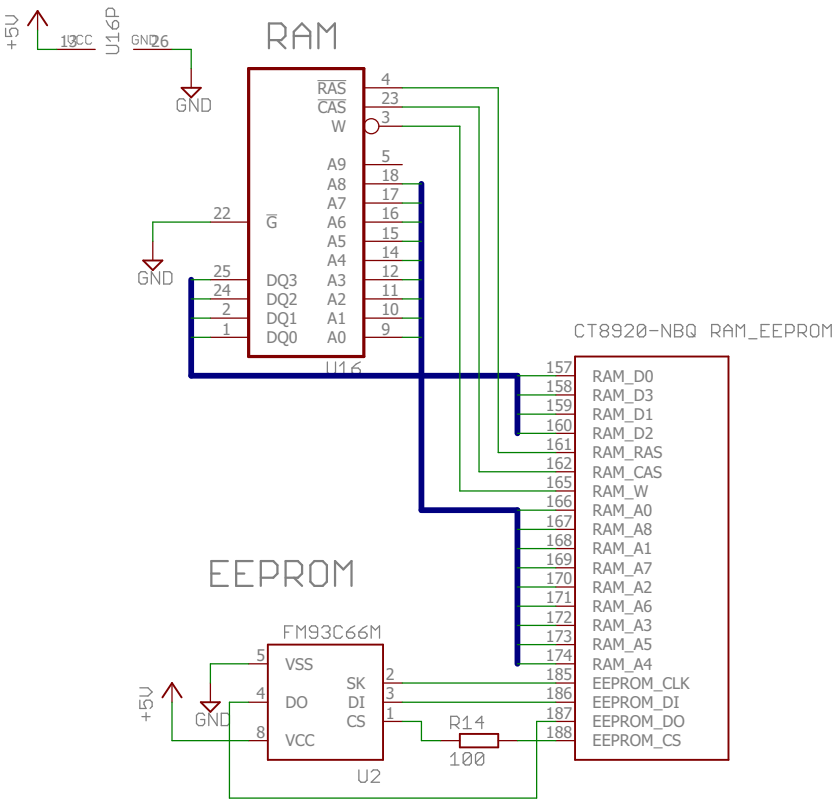
11 V
35 V
36 V
37 V
38 V
46 V
66 V
67 V
68 V
69 V
70 V
71 V



The diagram shows a 5V voltage regulator circuit. A 5V input is connected to the input pin of the regulator. A 220μF capacitor (C21) is connected between the input pin and ground. A 10μF capacitor (C3) is connected between the input pin and the output pin. A 20nF capacitor (C1) is connected between the output pin and ground. A 20nF capacitor (C2) is connected between the output pin and the input pin. A 20nF capacitor (C4) is connected between the output pin and ground. The output pin is connected to a +5V output terminal. Ground is indicated by a GND symbol.



RAM, EEPROM



Analog part

Multiplexer

Operational amplifier

