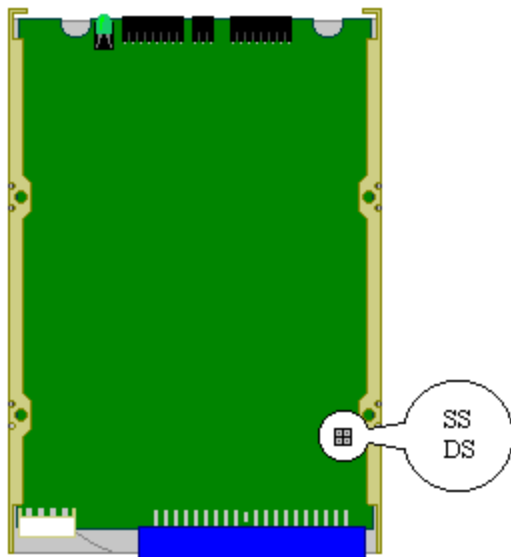


ProDrive™ 40/80



Configuration Guide

CMOS Values

Capacity	40MB	80MB
Cylinders	965	965
Heads	5	10
Sectors	17	17
Write Precomp	65535	65535
Landing Zone	965	965

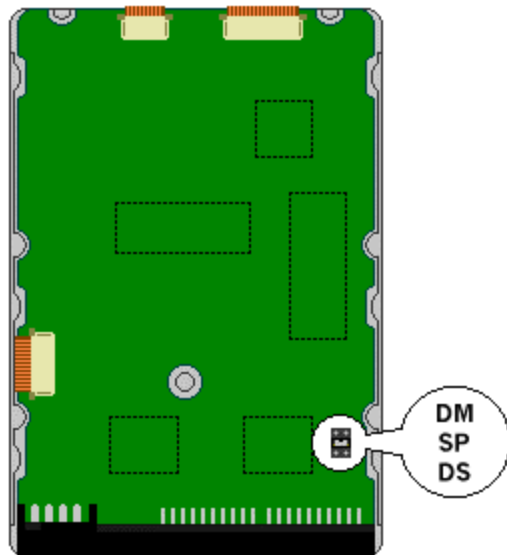
Note on Write Pre-compensation:

The Quantum ProDrive series drive does not require write pre-compensation, your CMOS setting should be set to reflect that this feature is not enabled. If the setting of 'none' is not present, the value 65535 is a number that the BIOS will accept to disable this feature.

Jumper Settings

Single Drive	DS only
Master Drive	DS only
Slave Drive	No jumpers

ProDrive™ 52/80/105



Configuration Guide

CMOS Values

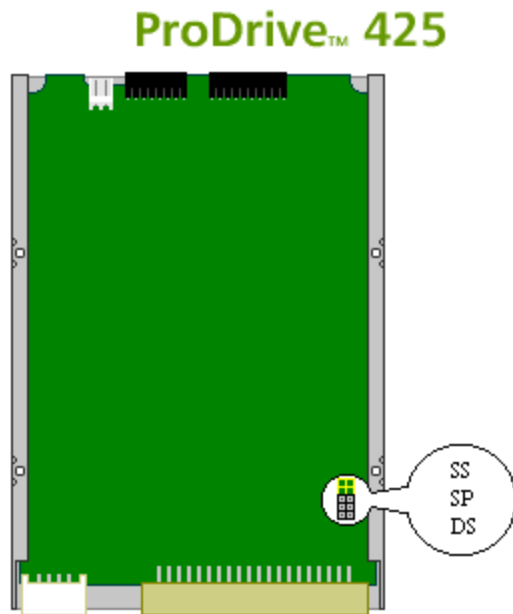
Capacity	52MB	85MB	105MB
Cylinders	751	611	755
Heads	8	16	16
Sectors	17	17	17
Write Precomp	65535	65535	65535
Landing Zone	751	611	755

Note on Write Pre-compensation:

The Quantum LPS series drive does not require write pre-compensation, your CMOS setting should be set to reflect that this feature is not enabled. If the setting of 'none' is not present, the value 65535 is a number that the BIOS will accept to disable this feature.

Jumper Settings

Single Drive	DS only
Master Drive	DS only
Slave Drive	No jumpers



Configuration Guide

CMOS Values

Capacity	425MB
Cylinders	1021
Heads	16
Sectors	51
Write Precomp	65535
Landing Zone	1021

Note on Write Pre-compensation:

The Quantum 425AT series drive does not require write pre-compensation, your CMOS setting should be set to reflect that this feature is not enabled. If the setting of 'none' is not present, the value 65535 is a number that the BIOS will accept to disable this feature.

Jumper Settings

Single Drive	DS only
Master Drive	DS only
Slave Drive	No jumpers

ProDrive™ ELS

Configuration Guide

CMOS Values

Capacity	42MB	85MB	127MB	170MB
Cylinders	968	977	919	1011
Heads	5	10	16	15
Sectors	17	17	17	22
Write Precomp	65535	65535	65535	65535
Landing Zone	968	977	919	1011

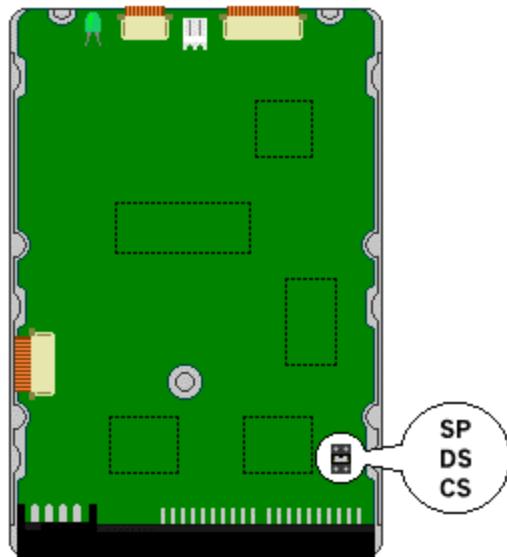
Note on Write Pre-compensation:

The Quantum ELS series drive does not require write pre-compensation, your CMOS setting should be set to reflect that this feature is not enabled. If the setting of 'none' is not present, the value 65535 is a number that the BIOS will accept to disable this feature.

Jumper Settings

Single Drive	DS only
Master Drive	DS only
Slave Drive	No jumpers

ProDrive™ LPS 120/140



Configuration Guide

CMOS Values

Capacity	120MB	240MB
Cylinders	901	723
Heads	5	13
Sectors	53	51
Write Precomp	65535	65535
Landing Zone	901	723

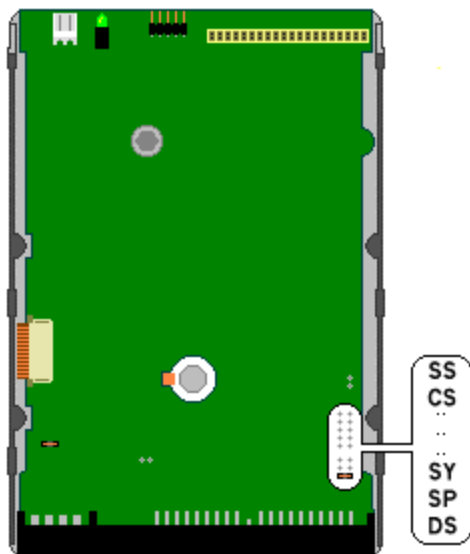
Note on Write Pre-compensation:

The Quantum ProDrive LPS series drive does not require write pre-compensation, your CMOS setting should be set to reflect that this feature is not enabled. If the setting of 'none' is not present, the value 65535 is a number that the BIOS will accept to disable this feature.

Jumper Settings

Single Drive	DS only
Master Drive	DS only
Slave Drive	No jumpers

ProDrive™ LPS 525



Configuration Guide

CMOS Values

Capacity	525MB
Cylinders	1017
Heads	16
Sectors	63
Write Precomp	65535
Landing Zone	1017

Note on Write Pre-compensation

The Quantum 525AT series drive does not require write pre-compensation, your CMOS setting should be set to reflect that this feature is not enabled. If the setting of 'none' is not present, the value 65535 is a number that the BIOS will accept to disable this feature.

Jumper Settings

Single Drive	DS only
Master Drive	DS only
Slave Drive	No jumpers