

EXPERIMENT : REAL OPL2LPT MUSIC FROM VIRTUALBOX

02.12.2017

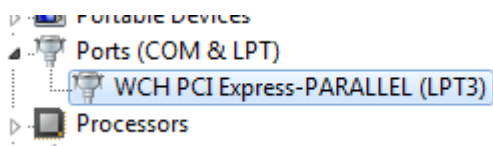
Setup : windows 7 PC with additional 5\$ PCI EXPRESS parallel port installed :



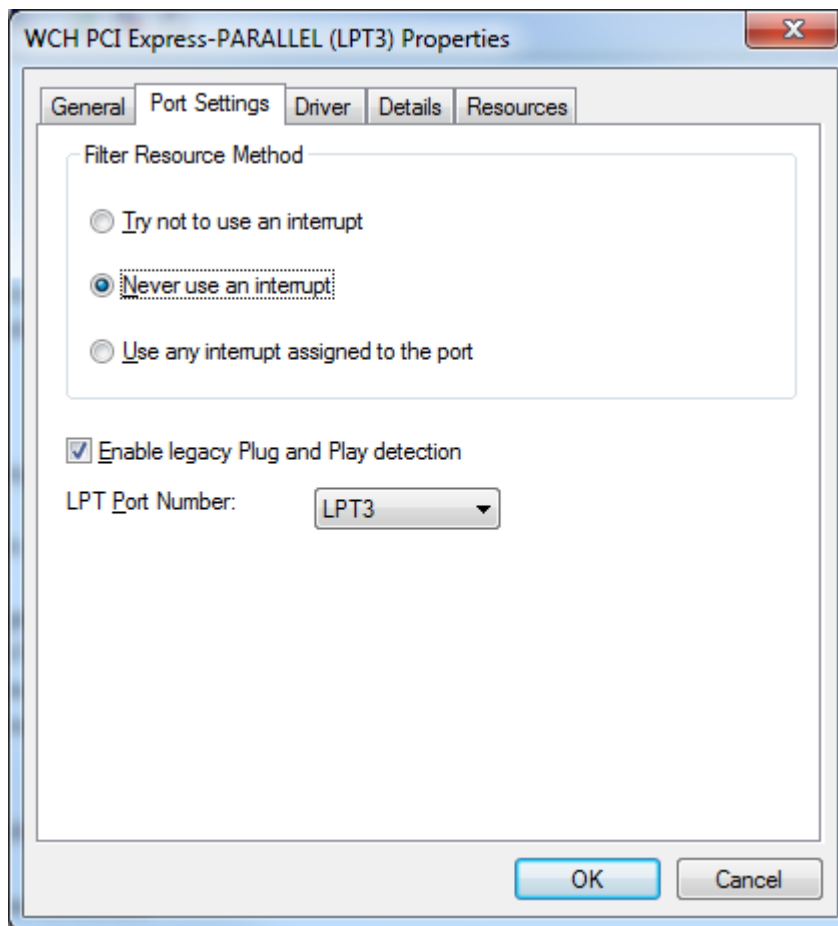
<https://www.benl.ebay.be/itm/Parallel-Port-DB25-25Pin-LPT-Printer-to-PCI-E-Express-Card-Converter-Adapter-1pc/141973277356>

Plug OPL2LPT on your parallel port and make sure it is powered. (from USB, or for a cleaner sound, from a 5V usb battery pack)

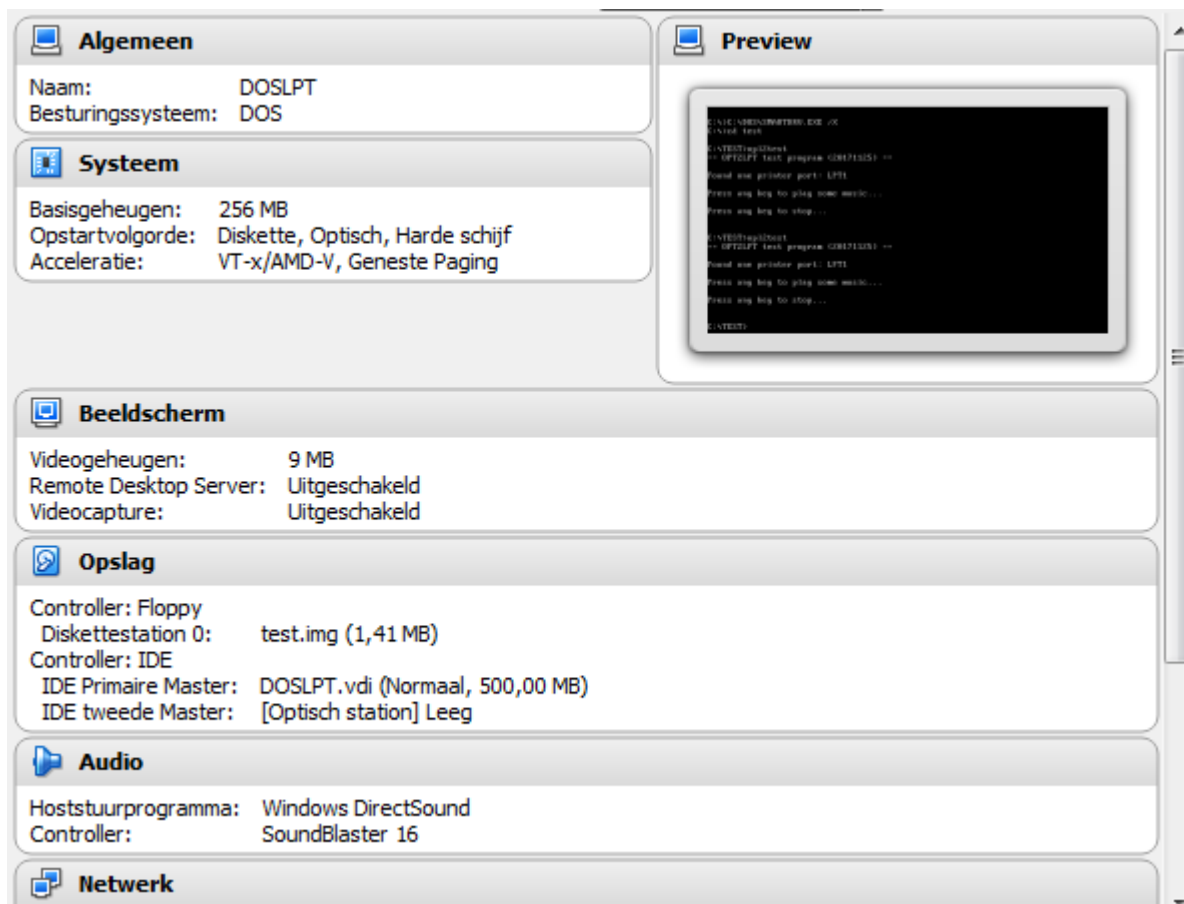
Check that the windows parallel port driver is correctly configured :



dir



Create an MSDOS virtual box image, install MSDOS or FreeDOS on it.



Copy opl2test.exe to your dos drive (you can load it from a floppy image and copy to c: drive)

Now shut down the virtual machine.

In the windows command line, run following commands to configure your windows LPT3 as DOS LPT1 port

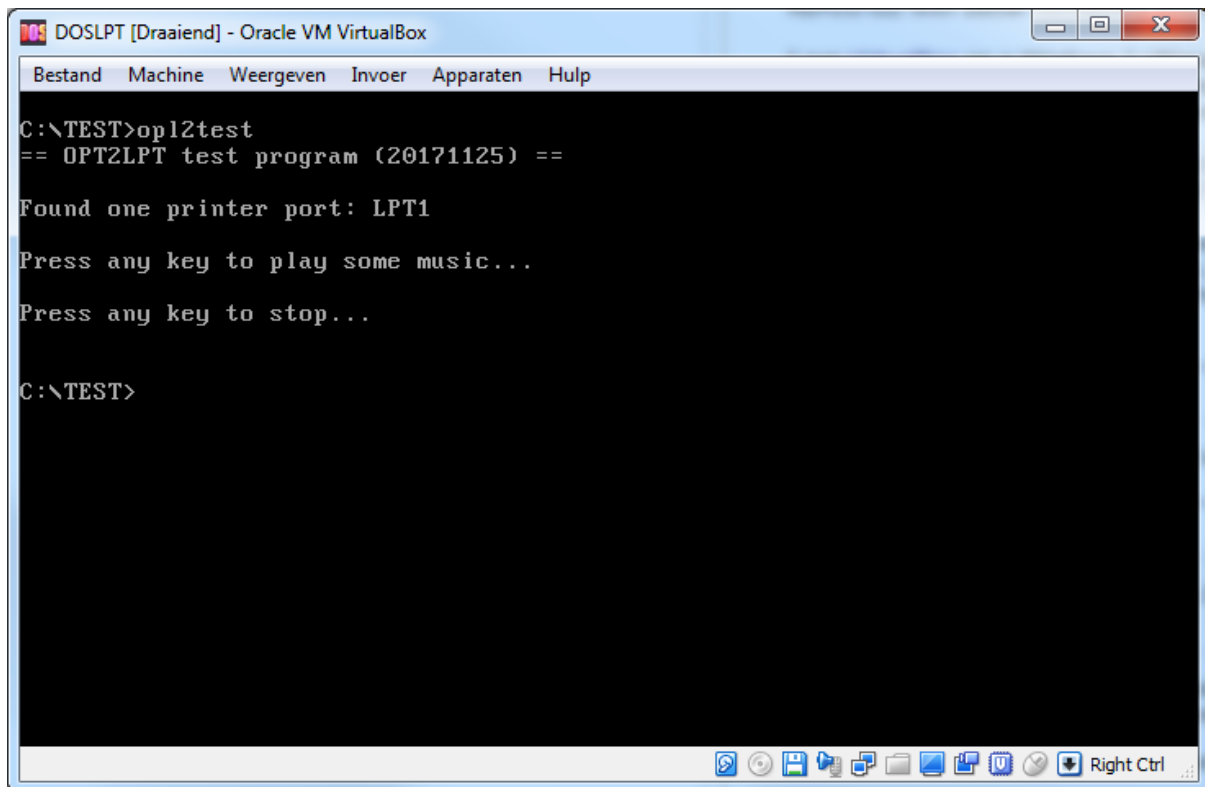
```
C:\Program Files\Oracle\VirtualBox>VBoxManage modifyvm "DOSLPT" --lptmode1 LPT3
```

```
C:\Program Files\Oracle\VirtualBox>VBoxManage modifyvm "DOSLPT" --lpt1 0x378 7
```

Now startup again.

You can now run opl2test, MUSIC THROUGH A REAL OPL2 CHIP!!

This is a quick test with MSDOS 6.22

A screenshot of a DOSLPT virtual machine window titled "DOSLPT [Draaiend] - Oracle VM VirtualBox". The window has a menu bar with "Bestand", "Machine", "Weergeven", "Invoer", "Apparaten", and "Hulp". The main area is a black terminal window with white text. The text shows the command "C:\TEST>opl2test" being executed, followed by "== OPT2LPT test program (20171125) ==", "Found one printer port: LPT1", "Press any key to play some music...", and "Press any key to stop...". The prompt "C:\TEST>" is visible at the bottom. The taskbar at the bottom of the window shows various icons and a "Right Ctrl" button.

```
C:\TEST>opl2test
== OPT2LPT test program (20171125) ==
Found one printer port: LPT1
Press any key to play some music...
Press any key to stop...
C:\TEST>
```

I then also tried the same with FreeDos :

Simply boot you virtualbox system from the standard installer image from <http://www.freedos.org/download/>, install the base installer packets, and you are good to go.

Copy the needed utilities from <https://github.com/pdewacht/adlipt/releases/latest>

And copy some games or applications to test... (from disk images)

```
DOSLPT2 [Draaiend] - Oracle VM VirtualBox
Bestand Machine Weergeven Invoer Apparaten Hulp

UDUD2, 4-30-2013. CD/DUD name is FDCD0001.
BAD Controller at I-O address D000h, Chip I.D. 80867111h.
CD0: IDE0 Secondary-master, VBOX CD-ROM, PIO.
Performing action: APMDOS
If APMDOS slows down any app, use ADU:REG instead.
Going resident.
SHARE installed.

CuteMouse v1.9.1 alpha 1 [FreeDOS]
Installed at PS/2 port
Parse Error 3

  Drives Assigned
Drive Driver Unit
D: FDCD0001 0
2 drive(s) available.

Done processing startup files C:\FDCONFIG.SYS and C:\AUTOEXEC.BAT

Type HELP to get support on commands and navigation.

Welcome to the FreeDOS 1.2 operating system (http://www.freedos.org)

C:\>
```

```
DOSLPT2 [Draaiend] - Oracle VM VirtualBox
Bestand Machine Weergeven Invoer Apparaten Hulp

C:\>cd test
C:\TEST>dir
Volume in drive C is MS-DOS_6
Volume Serial Number is 4B82-78D0
Directory of C:\TEST

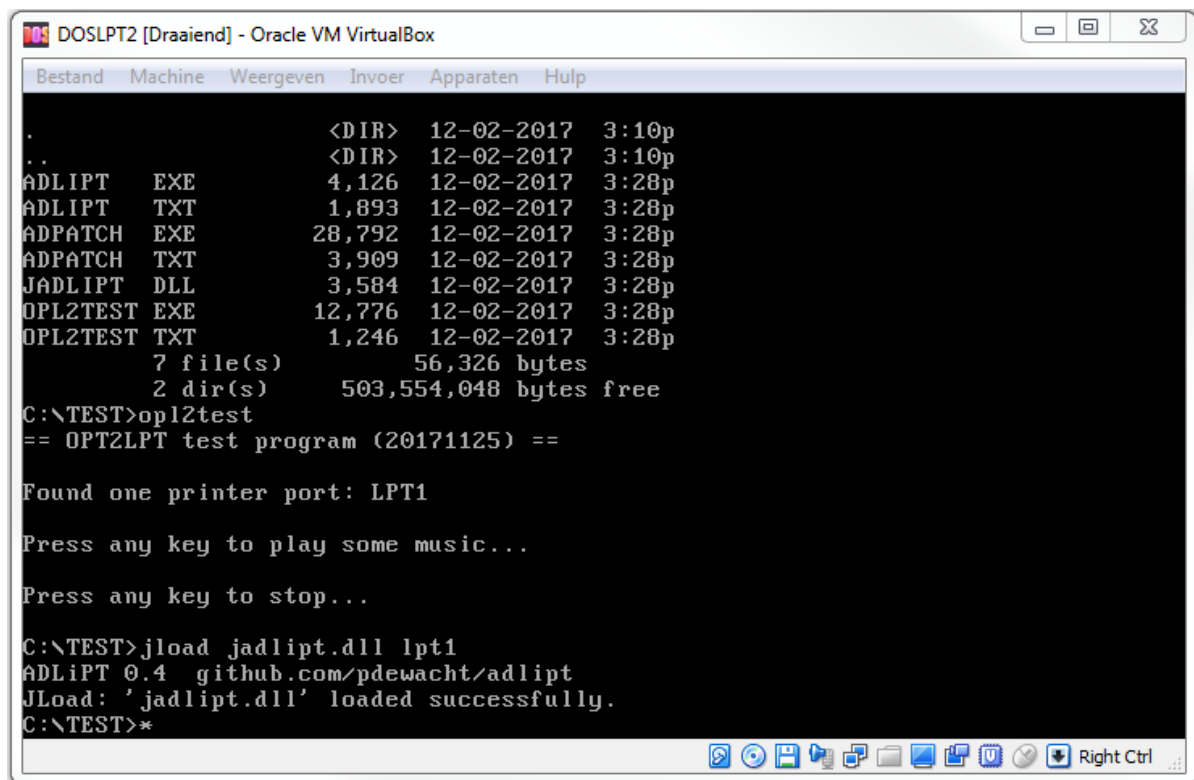
.                <DIR>    12-02-2017   3:10p
..               <DIR>    12-02-2017   3:10p
ADLIPT  EXE         4,126  12-02-2017   3:28p
ADLIPT  TXT         1,893  12-02-2017   3:28p
ADPATCH EXE       28,792  12-02-2017   3:28p
ADPATCH TXT        3,909  12-02-2017   3:28p
JADLIPT DLL        3,584  12-02-2017   3:28p
OPL2TEST EXE       12,776  12-02-2017   3:28p
OPL2TEST TXT        1,246  12-02-2017   3:28p
          7 file(s)          56,326 bytes
          2 dir(s)       503,554,048 bytes free
C:\TEST>opl2test
== OPT2LPT test program (20171125) ==

Found one printer port: LPT1

Press any key to play some music...

Press any key to stop...
```

For freedos, you can load the adlipt driver using Jload



```
. <DIR> 12-02-2017 3:10p
.. <DIR> 12-02-2017 3:10p
ADLIPT EXE 4,126 12-02-2017 3:28p
ADLIPT TXT 1,893 12-02-2017 3:28p
ADPATCH EXE 28,792 12-02-2017 3:28p
ADPATCH TXT 3,909 12-02-2017 3:28p
JADLIPT DLL 3,584 12-02-2017 3:28p
OPL2TEST EXE 12,776 12-02-2017 3:28p
OPL2TEST TXT 1,246 12-02-2017 3:28p
7 file(s) 56,326 bytes
2 dir(s) 503,554,048 bytes free
C:\TEST>opl2test
== OPT2LPT test program (20171125) ==

Found one printer port: LPT1

Press any key to play some music...

Press any key to stop...

C:\TEST>jload jadlipt.dll lpt1
ADLIPT 0.4 github.com/pdewacht/adlipt
JLoad: 'jadlipt.dll' loaded successfully.
C:\TEST>*
```

Then run some game or music program, like adlib jukebox...
Real OPL2 sound through OPL2LPT parallel port adapter !!

