

Version 10A

MS-6330 ATX

CPU:
AMD Socket-462 Processor

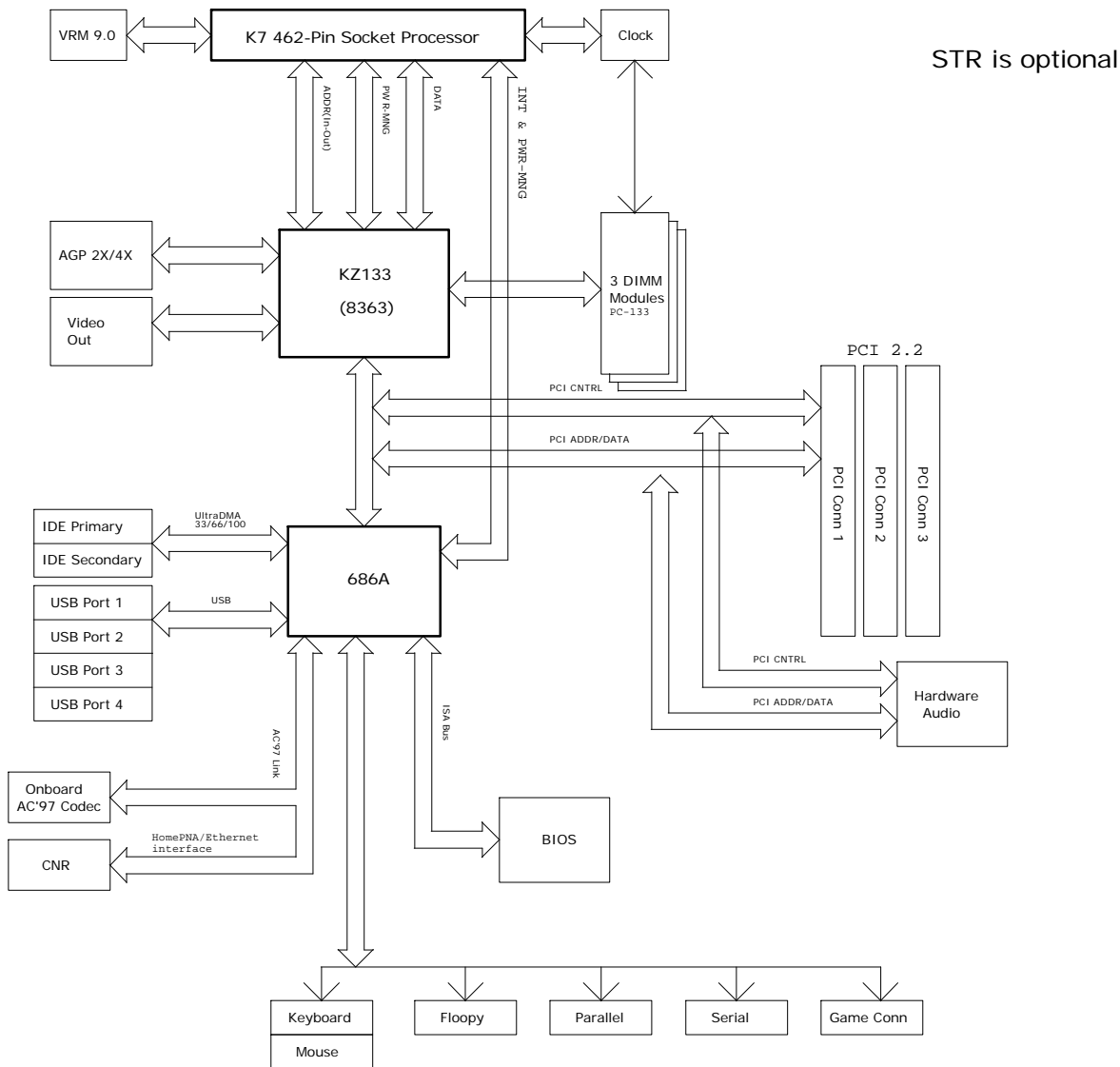
System Chipset:
VIA KZ133(North)
+ 686A

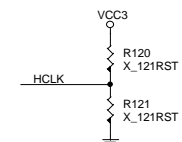
(South)
Expansion:
AGP SLOT* 1
PCI SLOT* 6
CNR SLOT* 1(Shared)

On Board: AC97 Codec

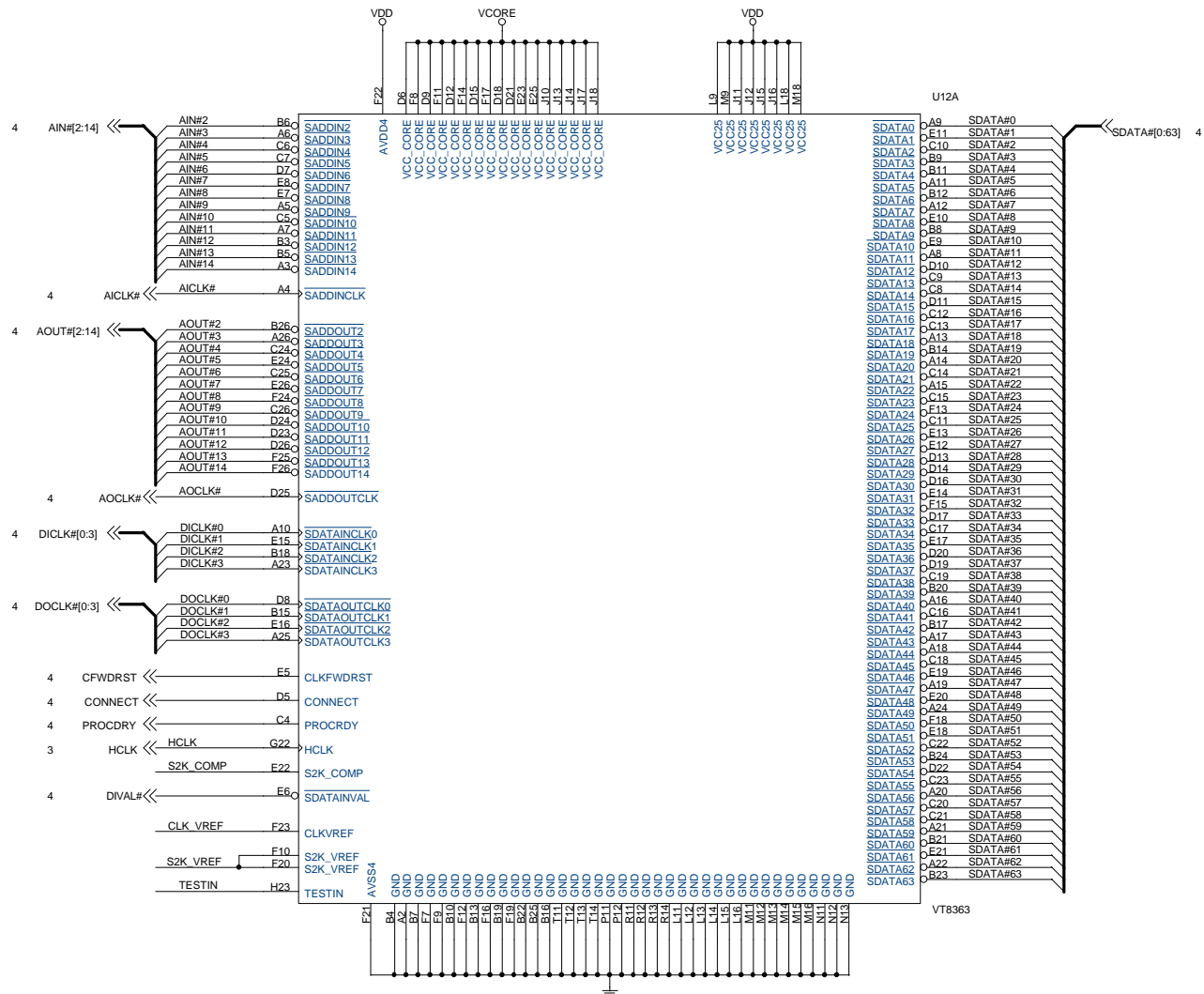
Title	Page
Cover Sheet	1
Block Diagram	2
Clock Synthesizer	3
462PGA Socket	4,5
KZ133(VT8363)---North Bridge	6,7,8
System Memory	9,10
AGP 4X SLOT	11
PCI Connectors	12,13
VT686A-----South Bridge	14,15,16
ATA66 Connectors	17
USB & KB & MS	18
Parallel / Serial Port	19
Graphics Connectors	20
BIOS & FAN	21
Front Panel	22
Linear Regulator & STR(OPT)	23
SC1155 CPU Power	24
Bypass Capacitors	25
ACPI & CNR Riser	26
PCI MASTER PAL	27
AC'97 Codec	28
Audio/Game Port	29
Power Good Circuit	30
PCI4 & PCI5	31
PCI6 & ISA	32
WINBOMD 601	33
	34
GPIO SPEC	
History	

Block Diagram

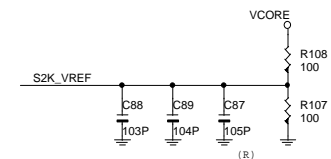




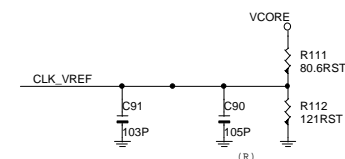
Frequency Ratio for 100-210 Hz						
FS4	FS3	FS2	FS1	CPU	PCI	CPU/P
1	1	1	1	133.3	33.3	4
1	1	1	0	105	35	3
1	1	0	1	100	33.3	3
1	1	0	0	66.8	33.4	2
1	0	1	1	124	31	4
1	0	1	0	110	36.7	3
1	0	1	1	133.3	44.4	3
1	0	0	1	83.3	41.6	2
0	1	1	1	150	37.5	4
0	1	1	0	115	38.3	3
0	1	0	1	112	37.3	3
0	1	0	0	75	37.5	2
0	0	1	1	140	35	4
0	0	1	0	120	40	3
0	0	0	1	103	34.3	3
0	0	0	0	74	34.3	2



$S2K_VREF$ at 60% @ 1.6V $VREF = 0.96V$



CLK_VREF at 60% @ 1.6V $VREF = 0.96V$

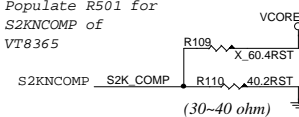


R225=60 for S2KPCOMP of VT8365.

S2KPCOMP TESTIN R113 X 60.4RST

For TESTIN of VT8363:
R225=4.7K in test mode.
No population of R225 in normal mode

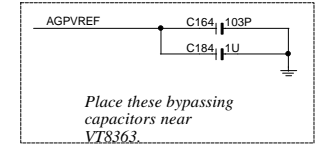
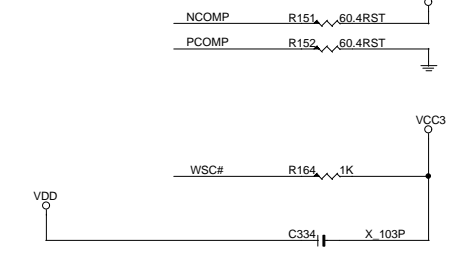
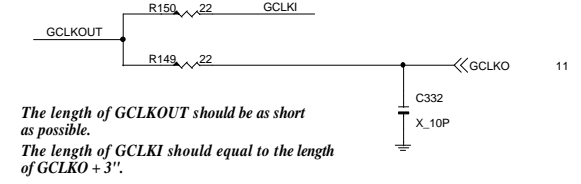
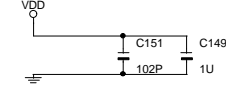
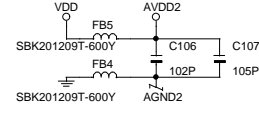
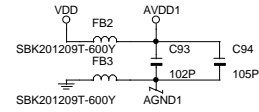
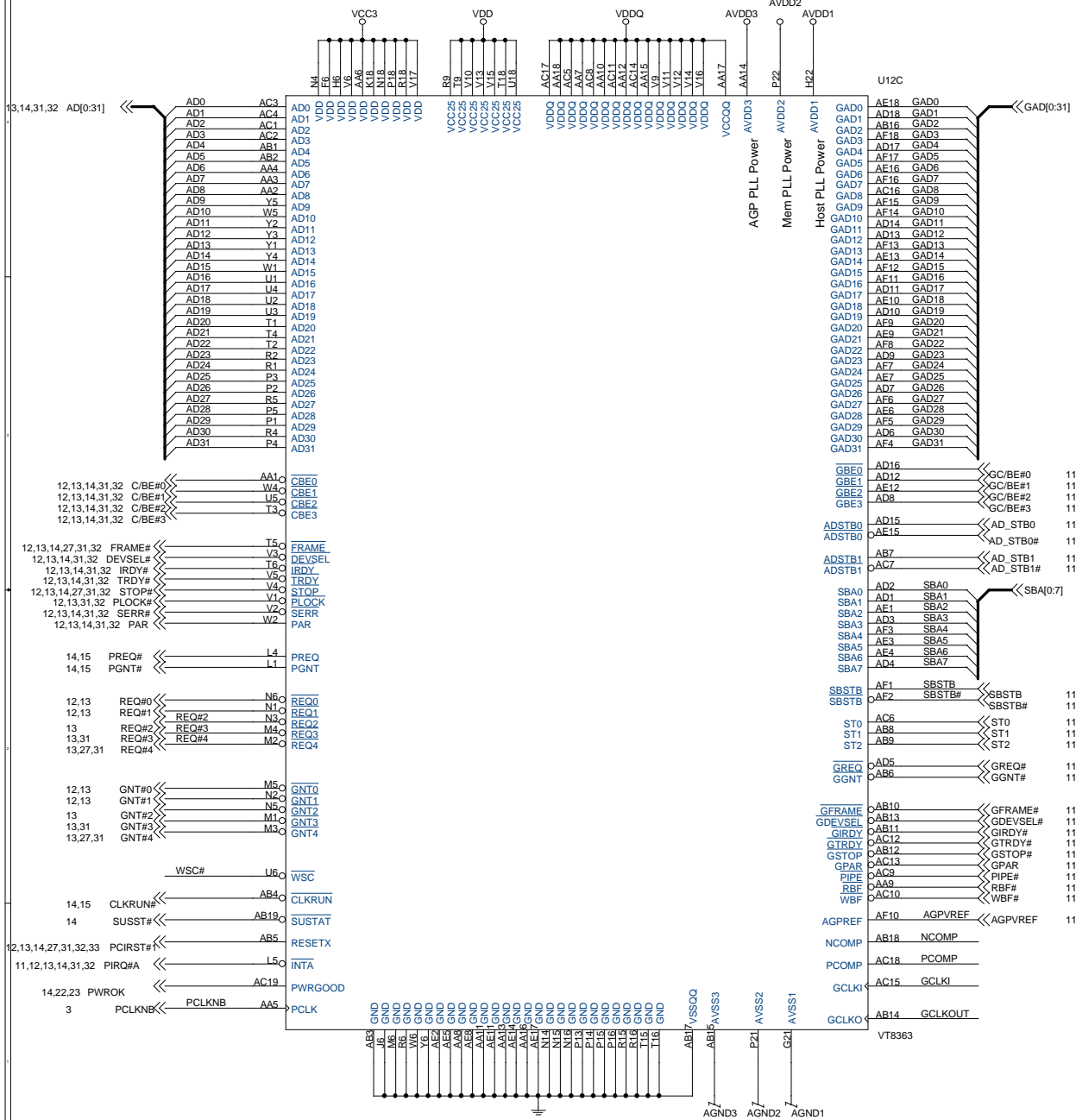
Populate R501 for S2KNCOMP of VT8365

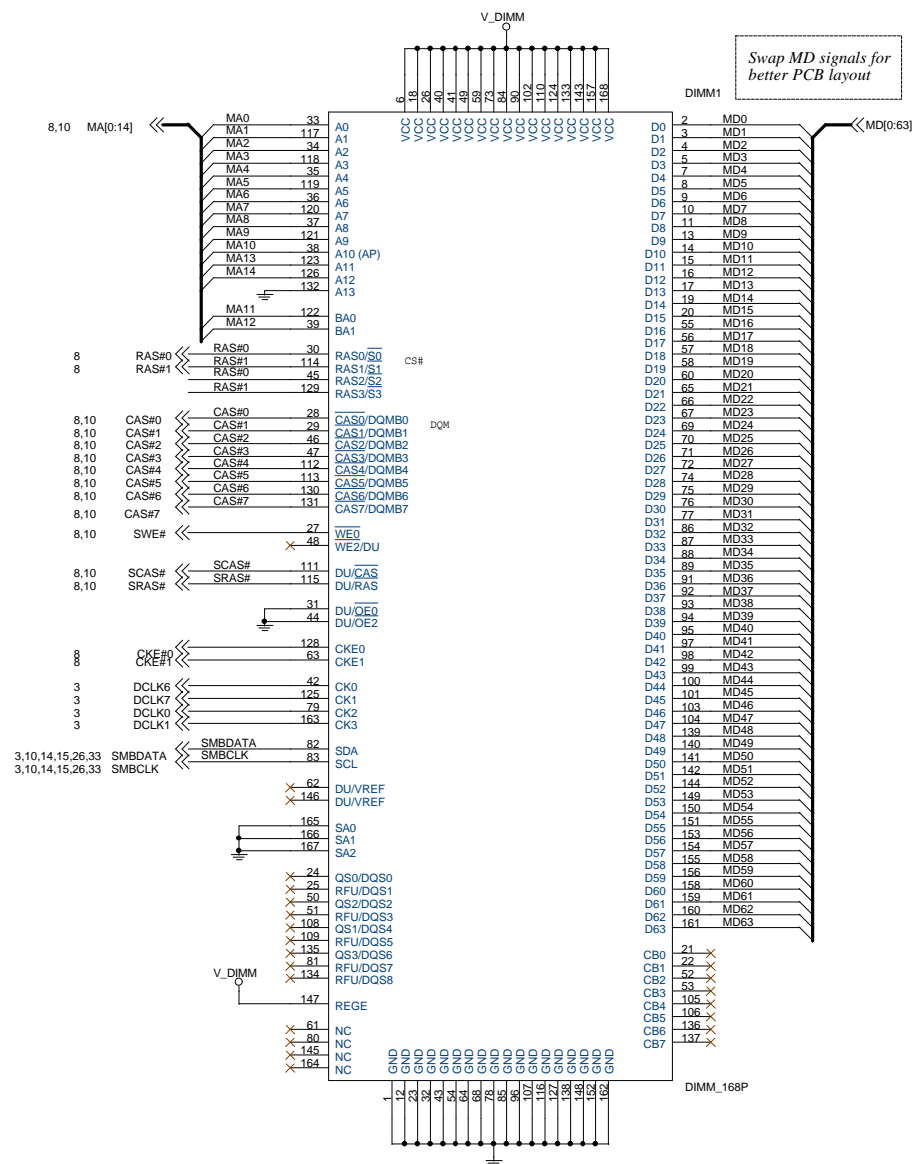


Populate R208 for S2K_COMP (S2KNCOMP) of VT8363

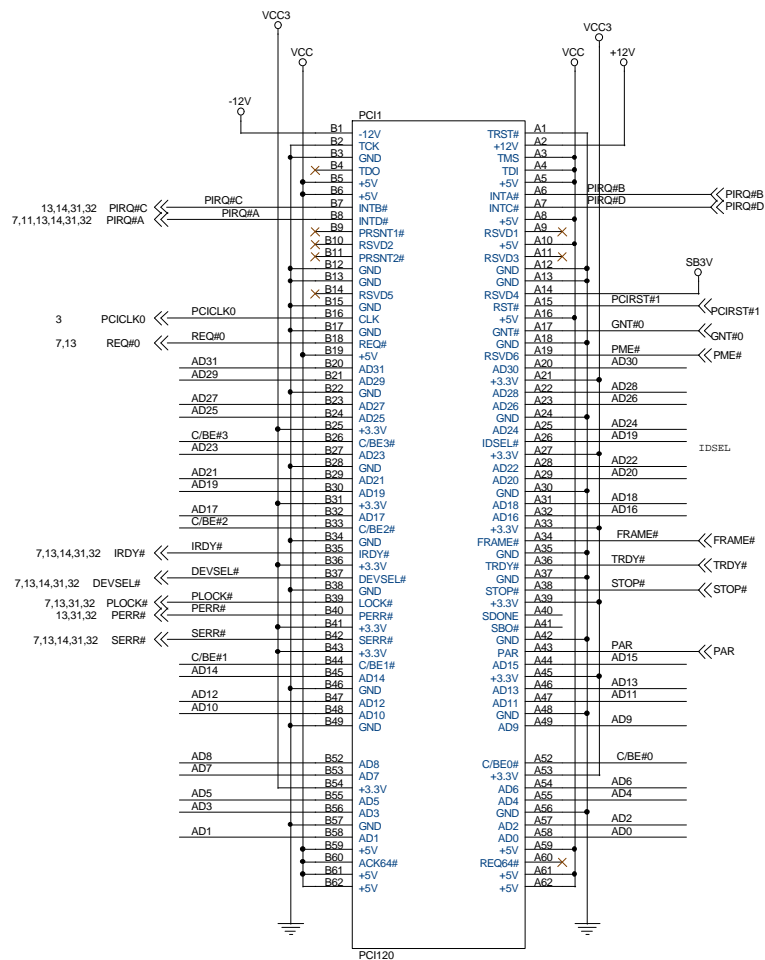
MICRO-STAR

Title		
NORTH BRIDGE VT8363 (S2K)		
Size	Document Number	Rev
C	MS-6330	10A
Date:	Tuesday, July 04, 2000	Sheet 6 of 33



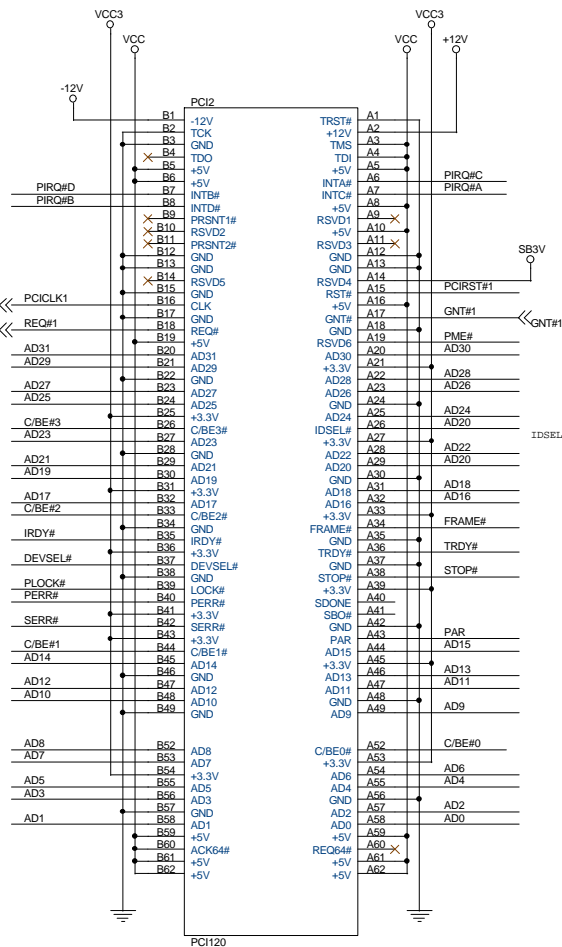


7,13,14,31,32 AD[0:31] << AD[0:31]
7,13,14,31,32 C/BE#[0:3] << C/BE#[0:3]



7,11,13,14,31,32
13,14,31,32
7,11,13,14,27,31,32,33
7,13
11,13,14,31,32

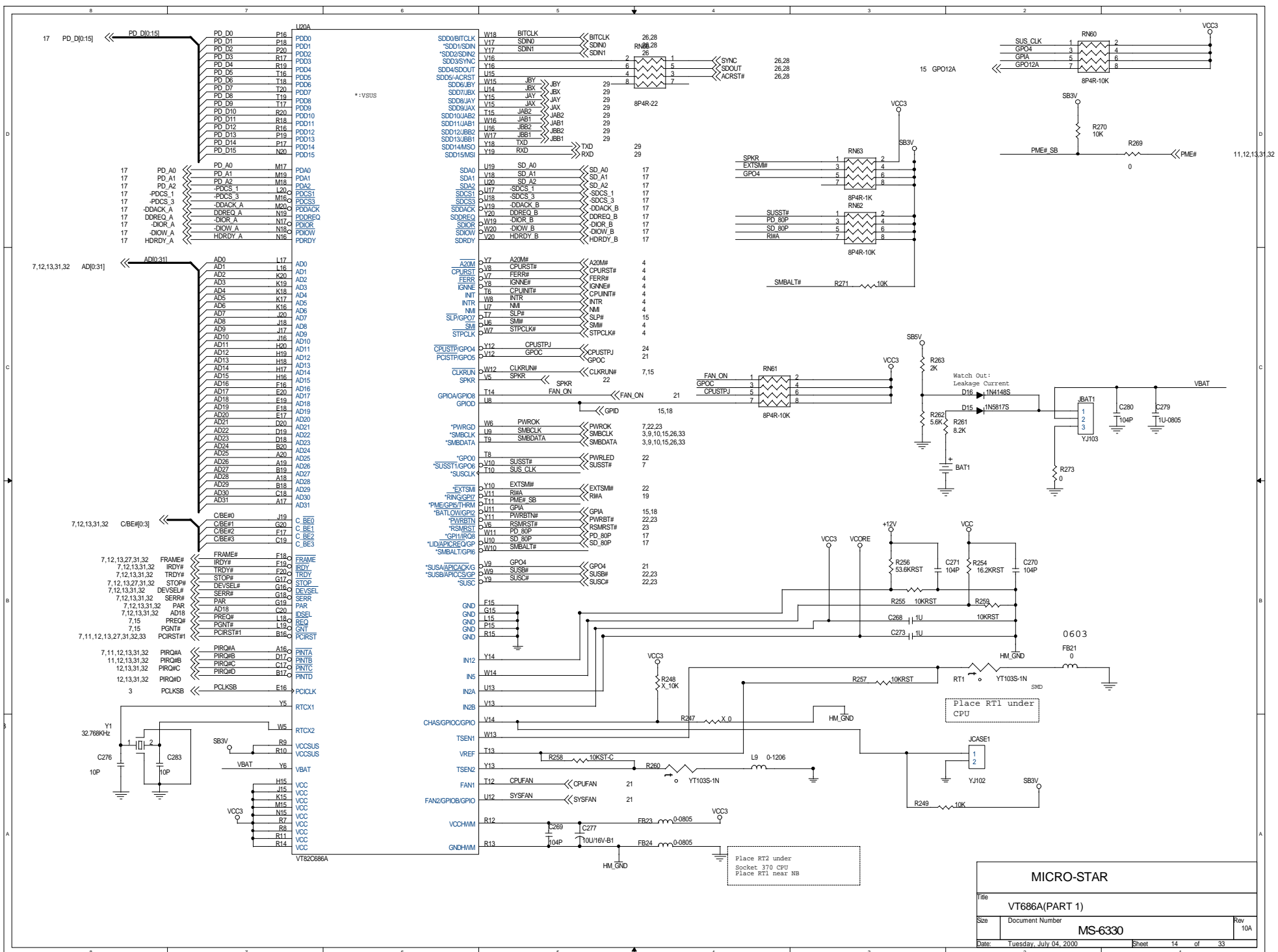
7,13,14,27,31,32
7,13,14,31,32
7,13,14,27,31,32
7,13,14,31,32

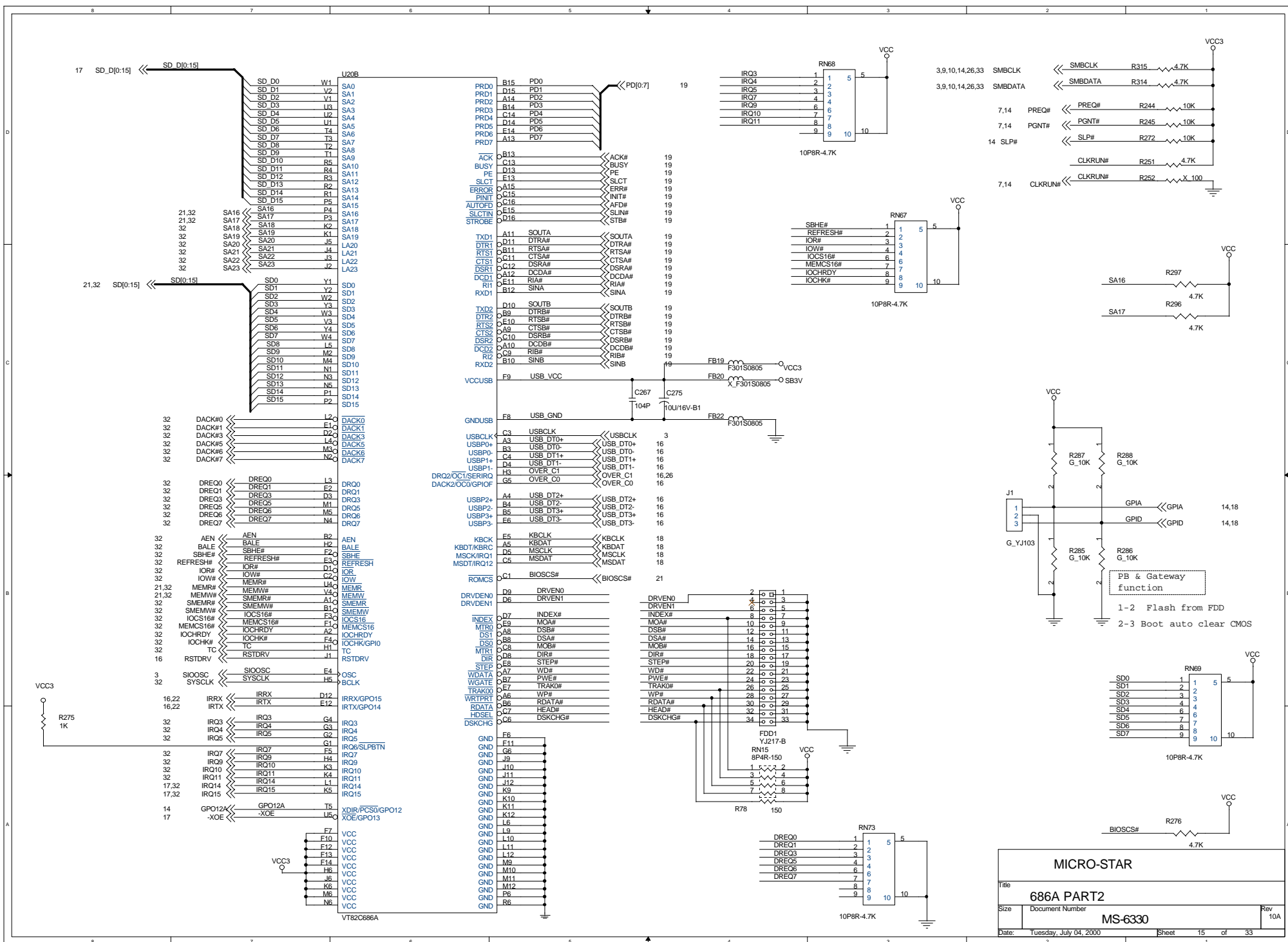


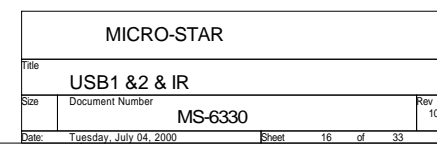
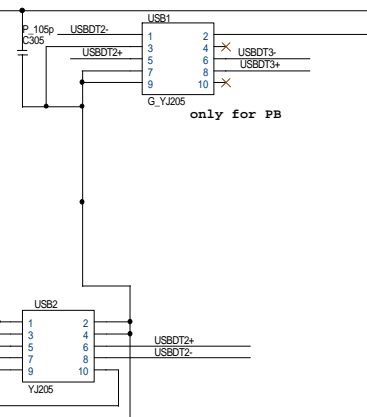
7,13

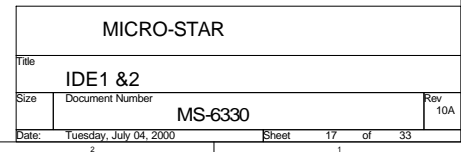
MICRO-STAR

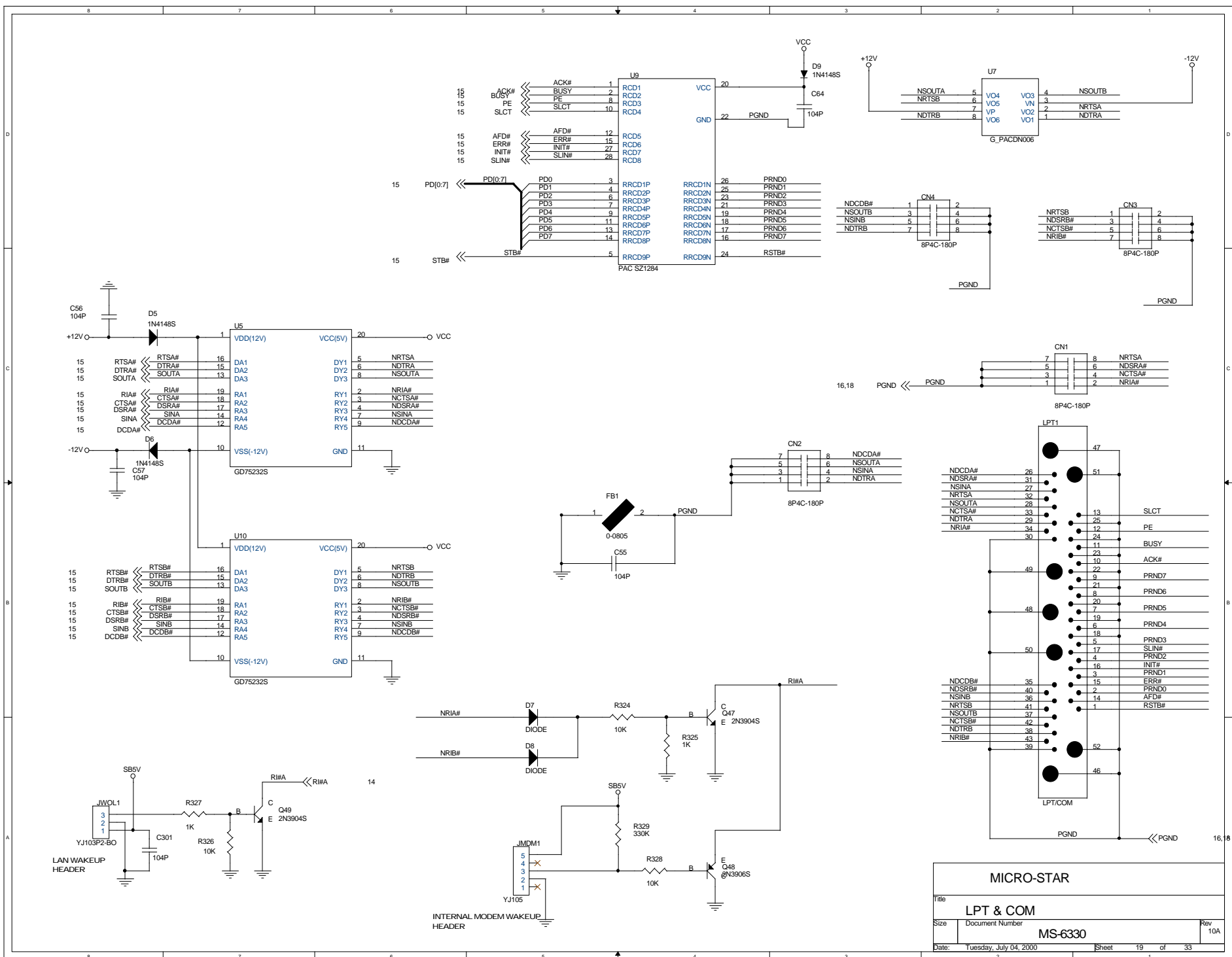
Title		
PCI 1 & 2		
Size	Document Number	Rev
	MS-6330	10A
Date: Tuesday, July 04, 2000		
Sheet 12 of 33		



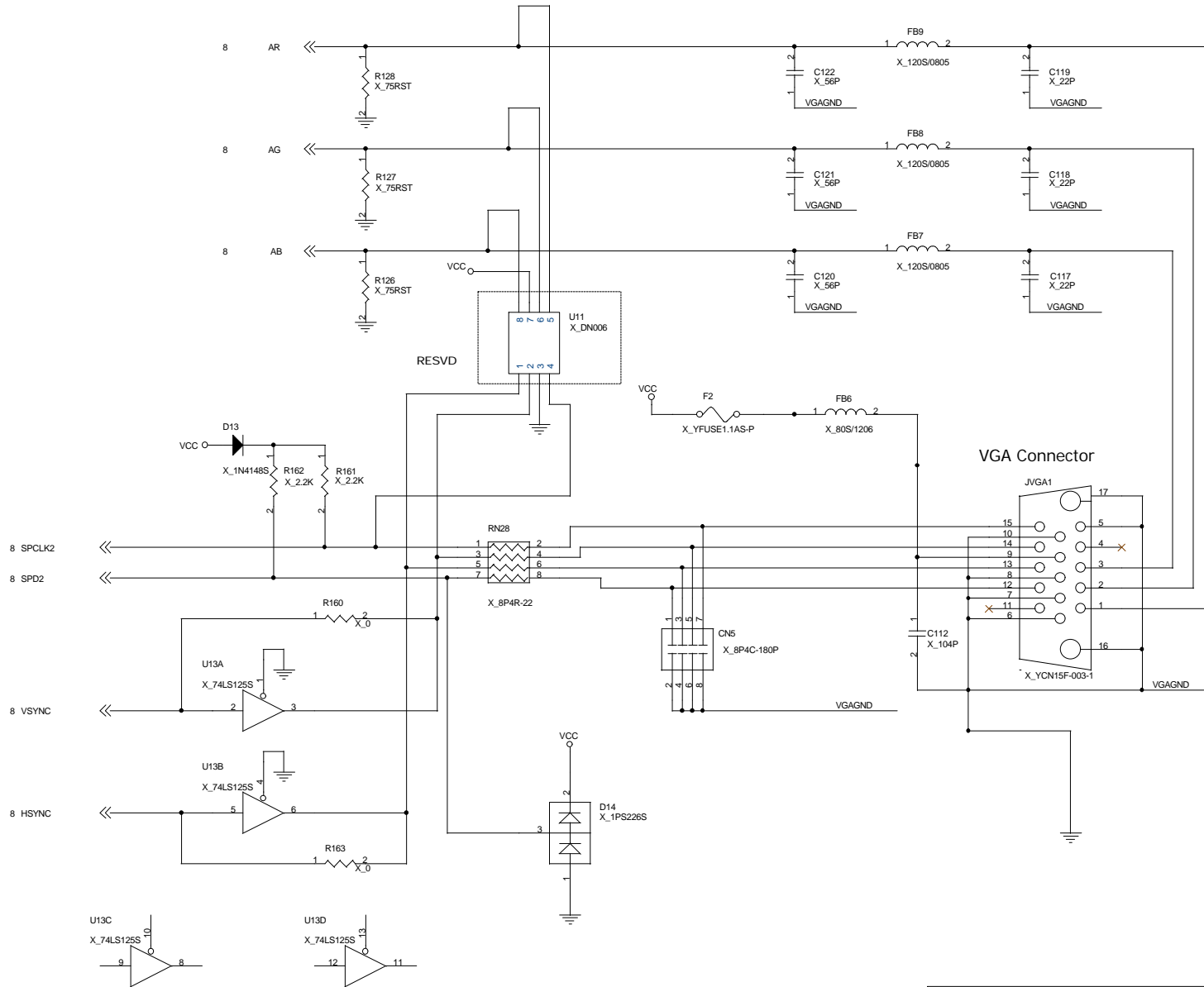








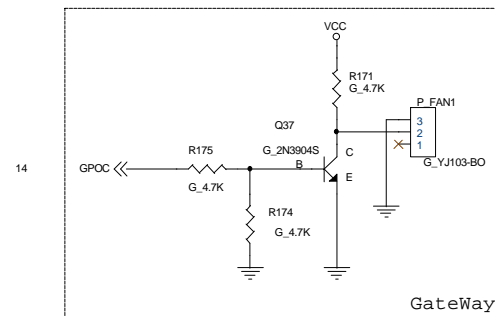
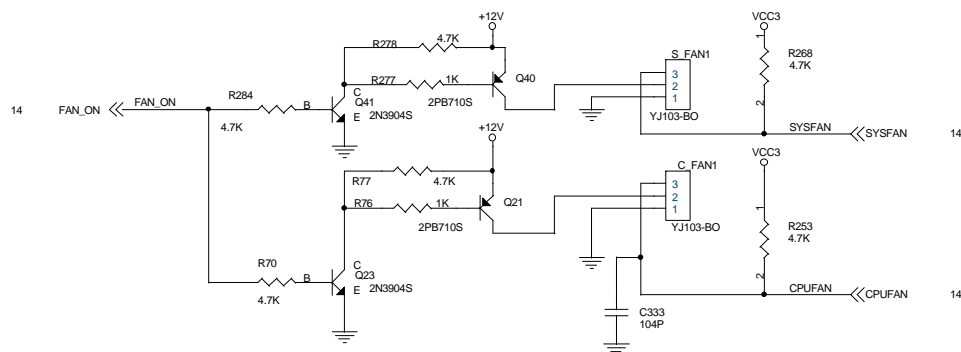
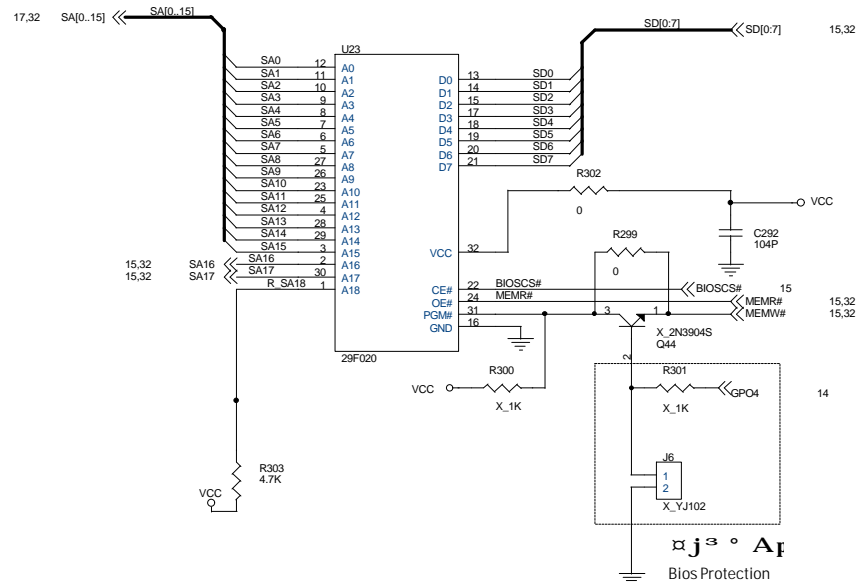
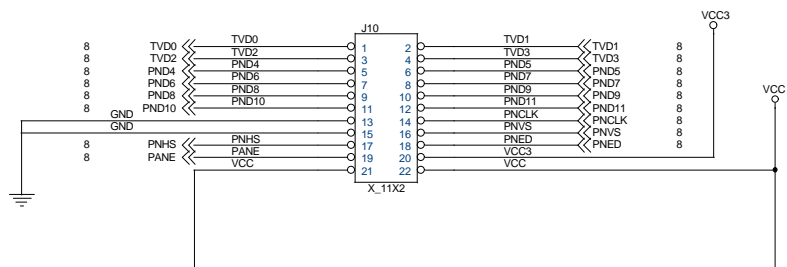
Video Connector



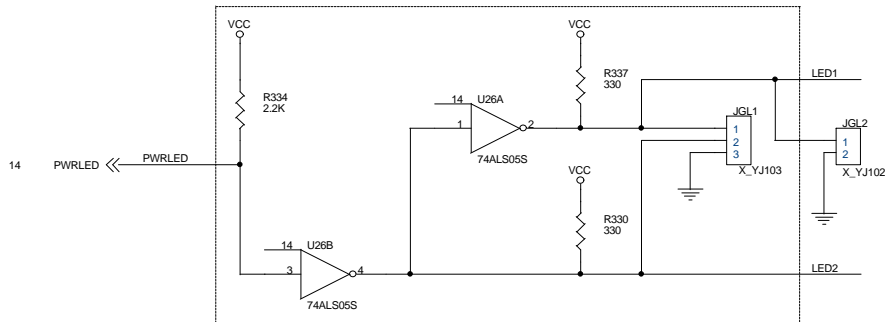
Used for LEVEL compliant, used if needed

MICRO-STAR

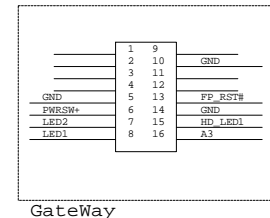
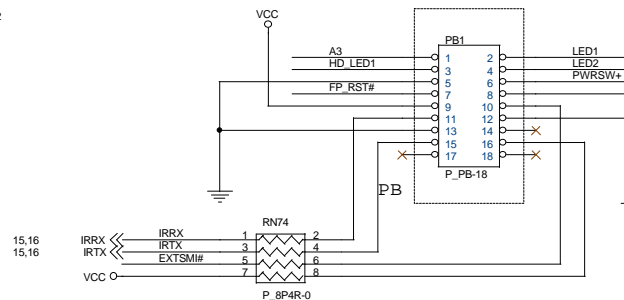
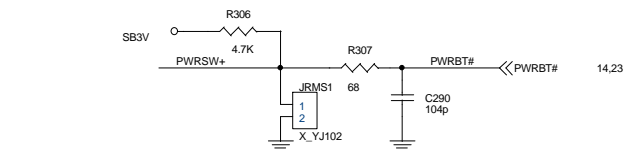
Title			
VGA CONNECTOR			
Size	Document Number		Rev
	MS-6330		10A
Date:	Tuesday, July 04, 2000	Sheet	20 of 33



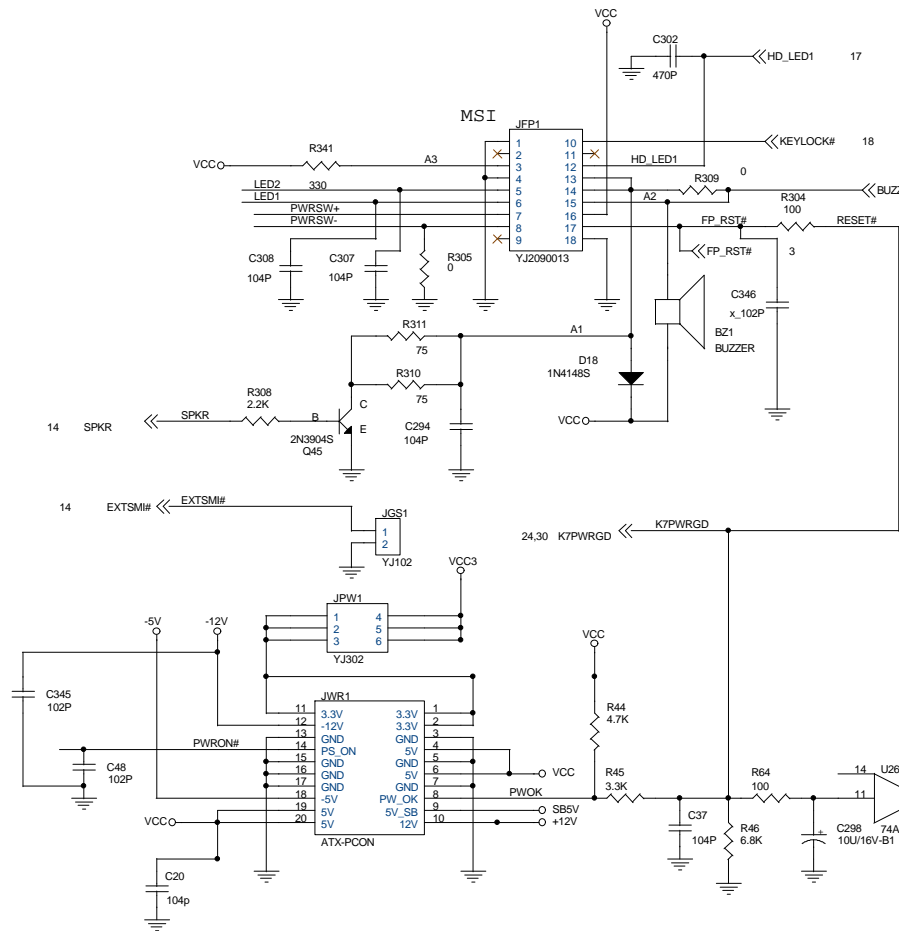
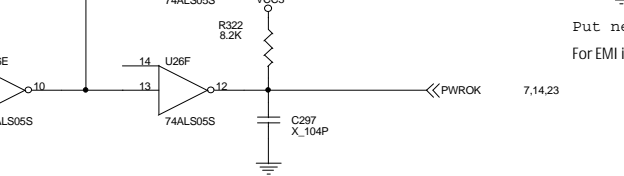
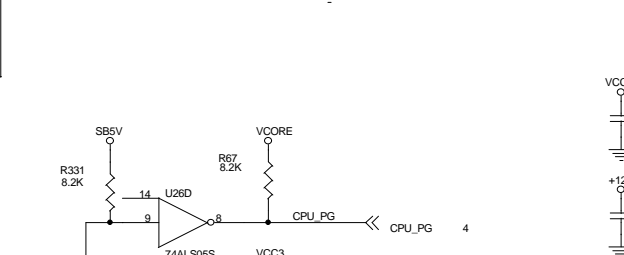
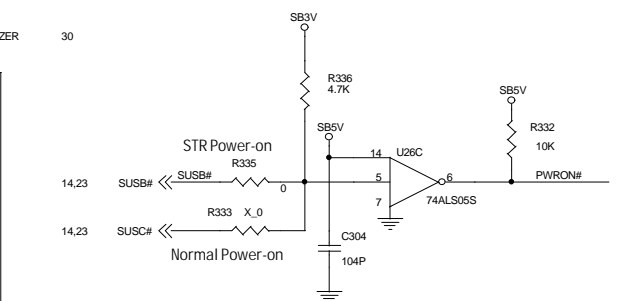
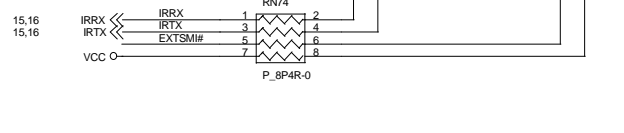
MICRO-STAR		
Title		
FLASH ROM & FAN		
Size	Document Number	Rev
	MS-6330	10A
Date:	Tuesday, July 04, 2000	Sheet 21 of 33



This block is reserved for two color LED indicate system power state.



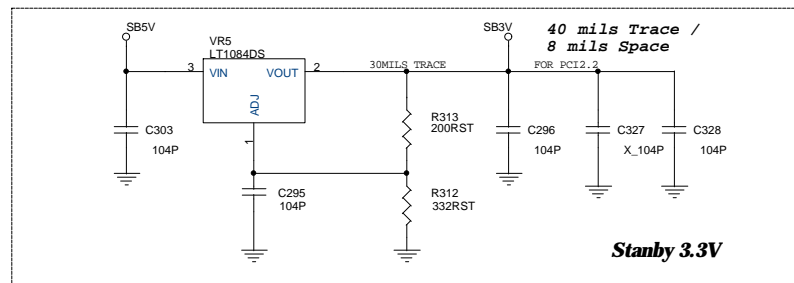
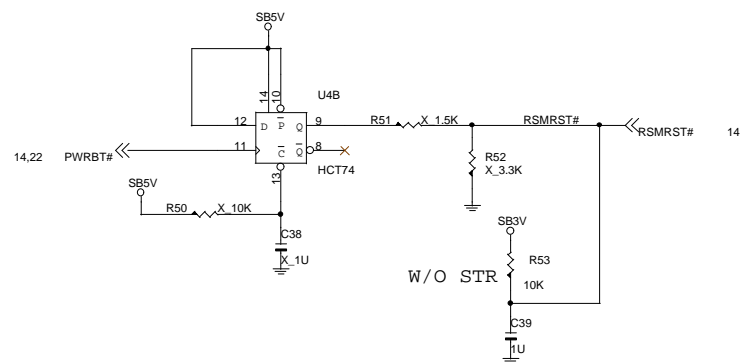
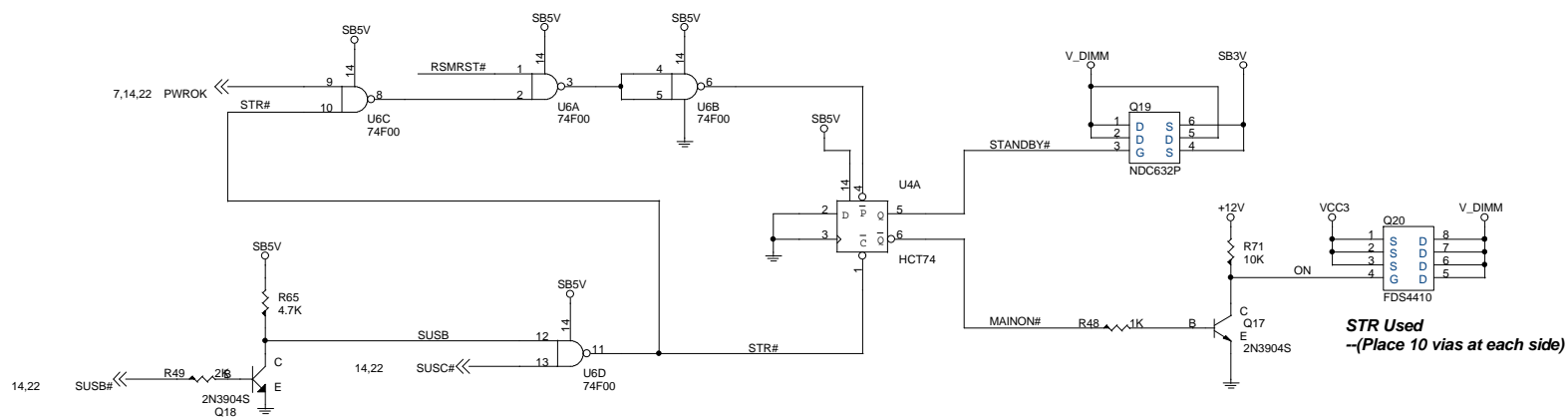
GateWay



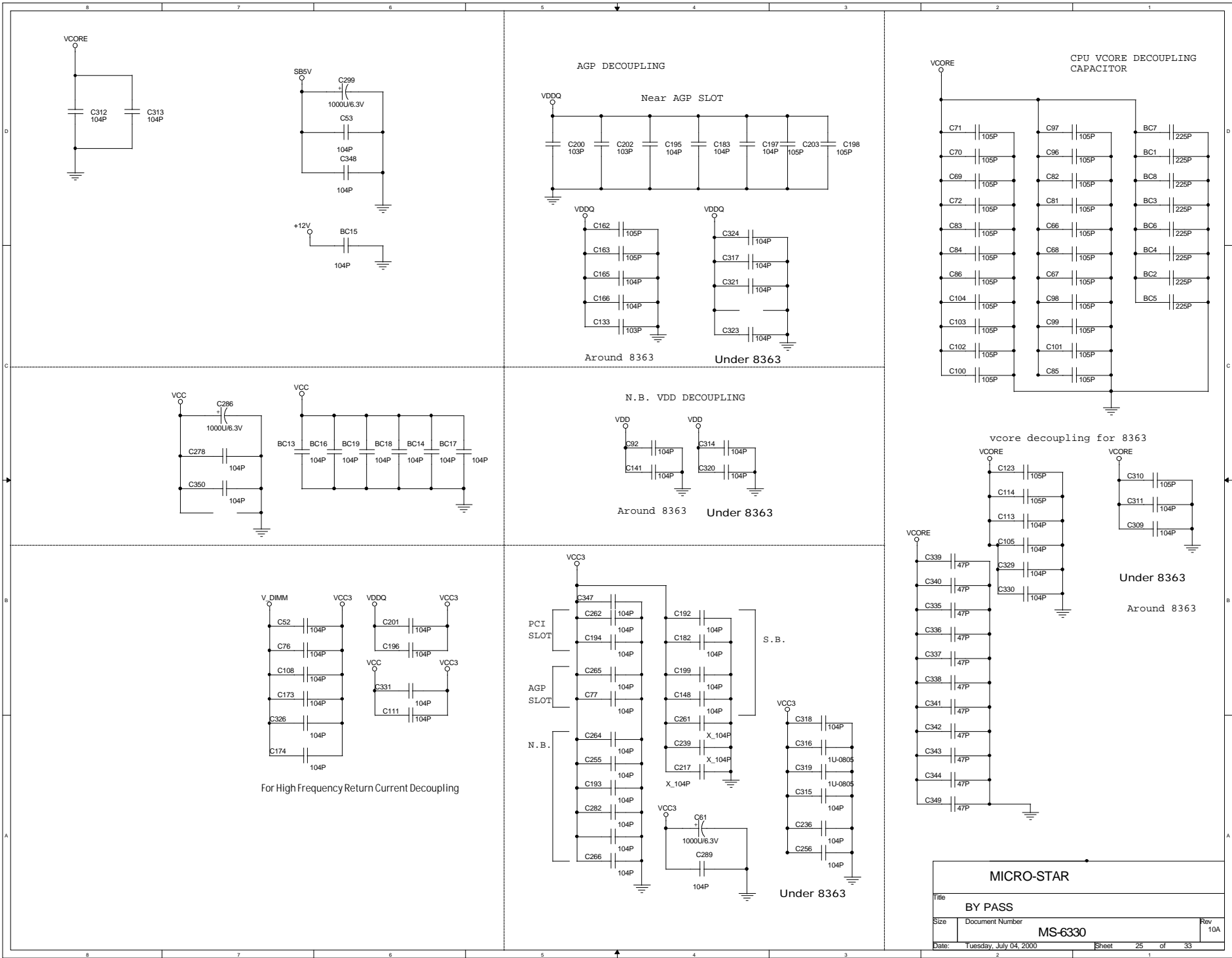
Power Sequence Protection

Put near ATX Power Connector
For EMI Issue

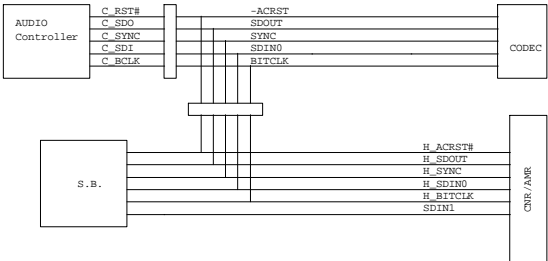
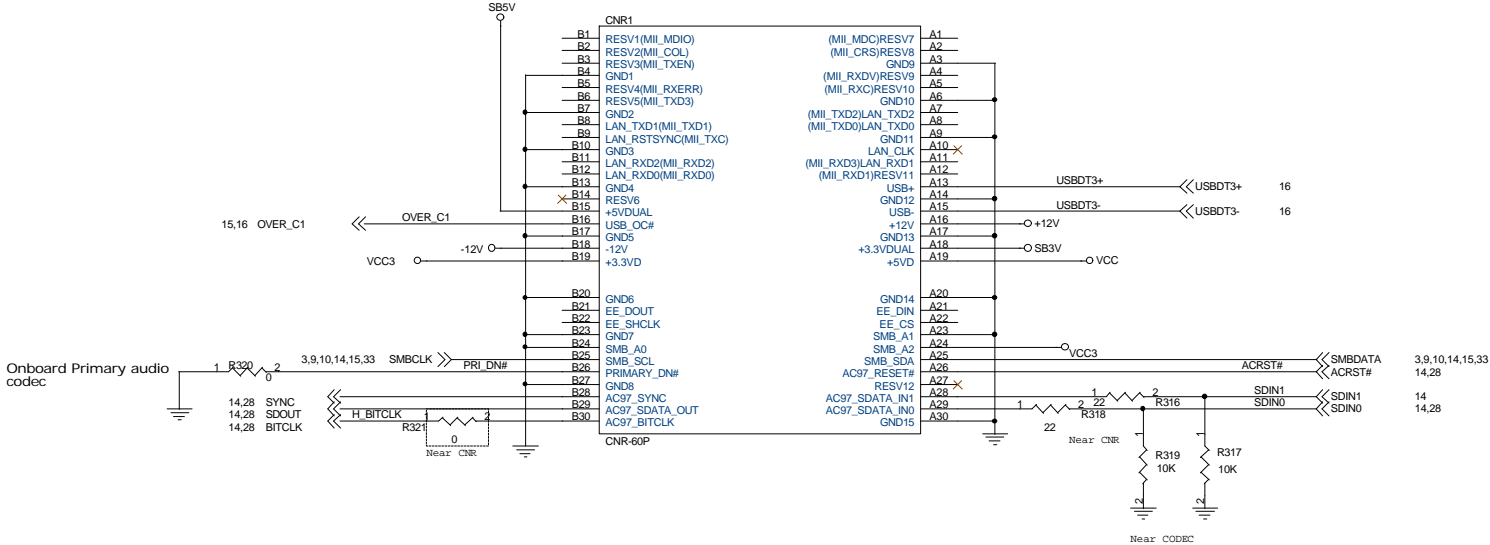
MICRO-STAR			
Title	FRONT PANNEL		
Size	Document Number	Rev 10A	
Date:	Tuesday, July 04, 2000	Sheet	22 of 33



Title			
SC1154			
Size	Document Number	Rev	
	MS-6330	10	
Date:	Tuesday, July 04, 2000	Sheet	24 of 33



CNR RISER



MICRO-STAR

CNR

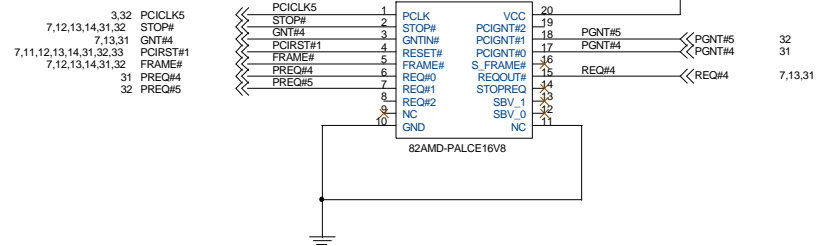
Document Number

MS-6330

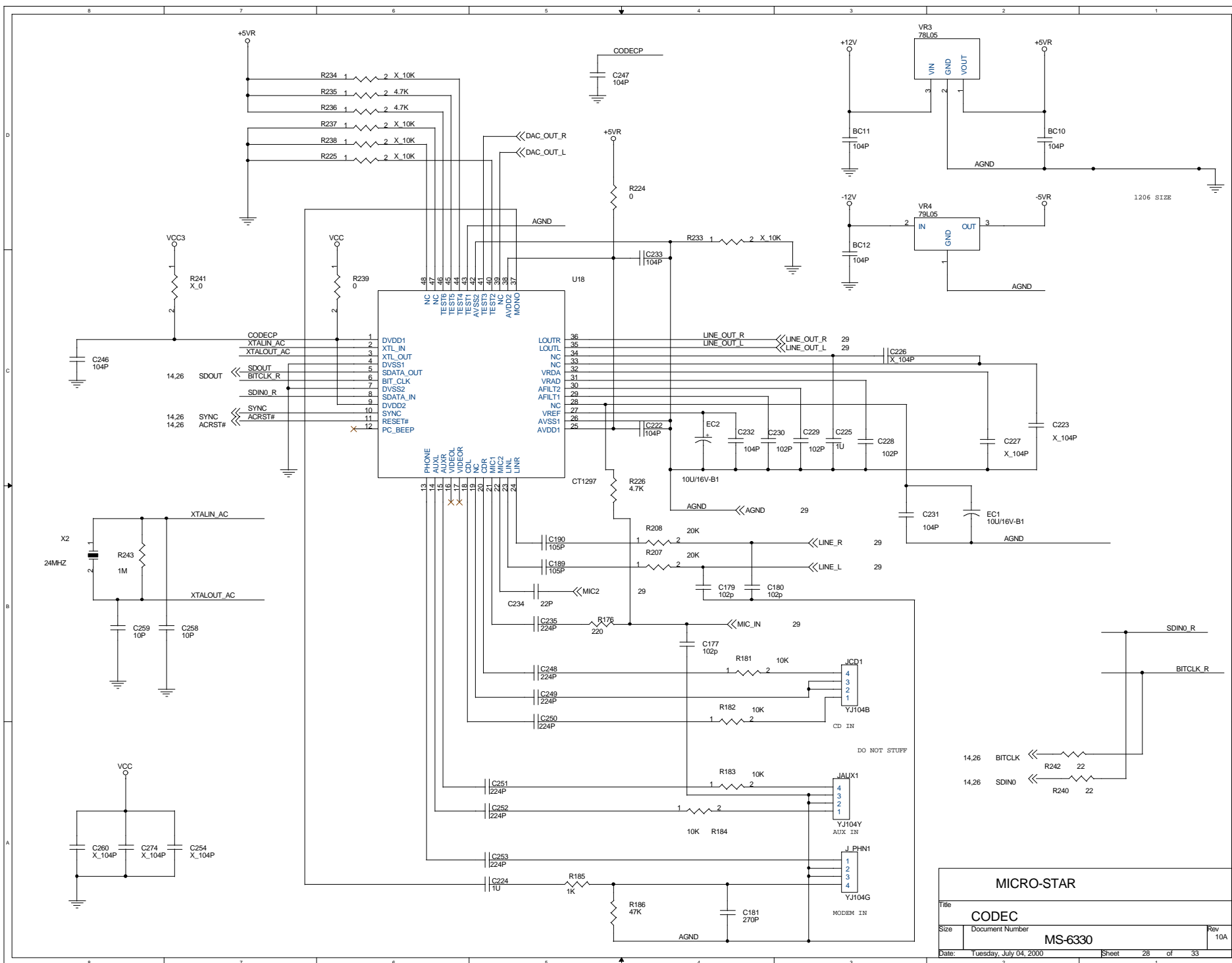
Rev	10A
-----	-----

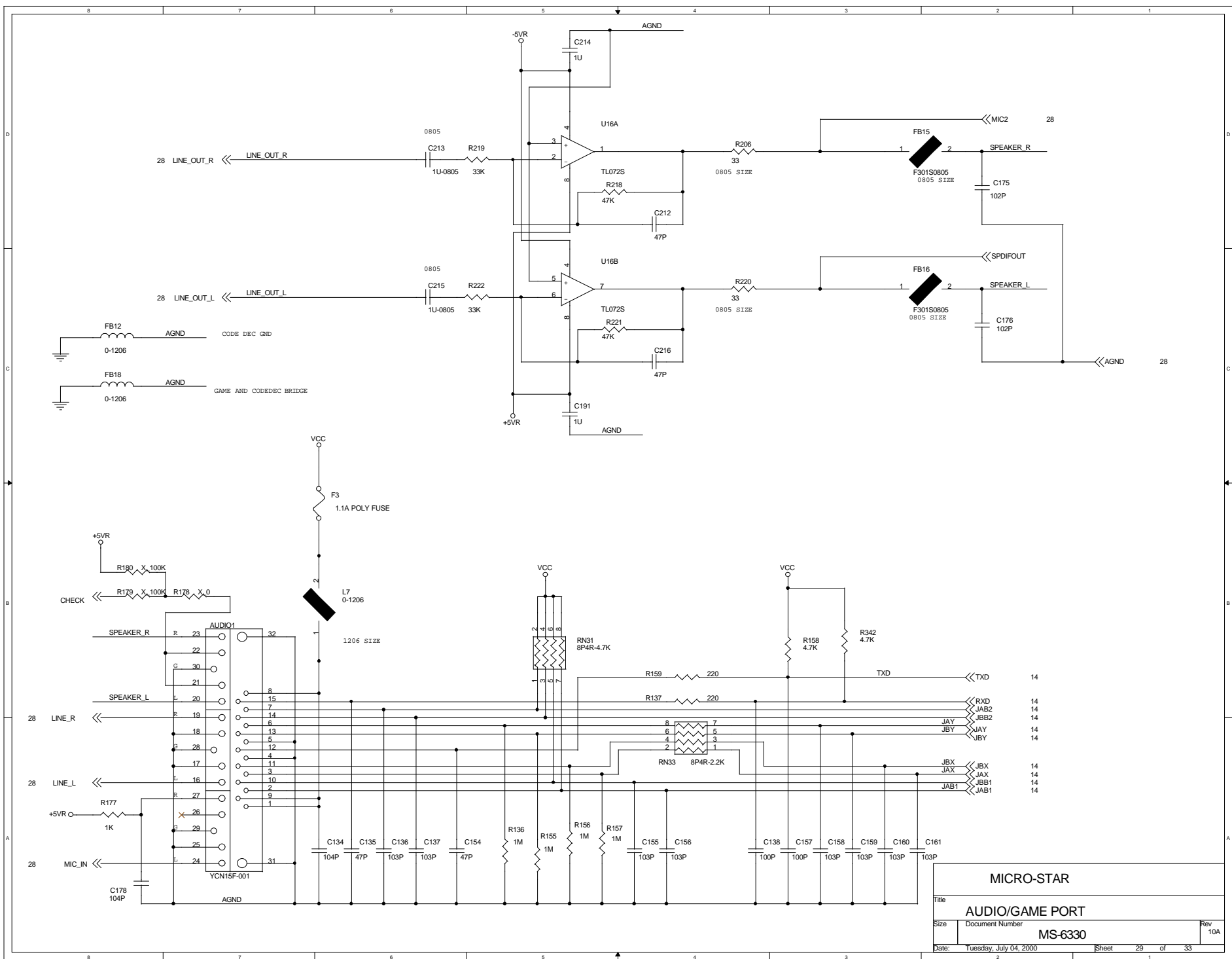
Date: Tuesday, July 04, 2000

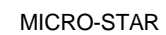
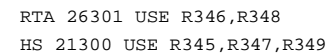
Sheet 26 of 33

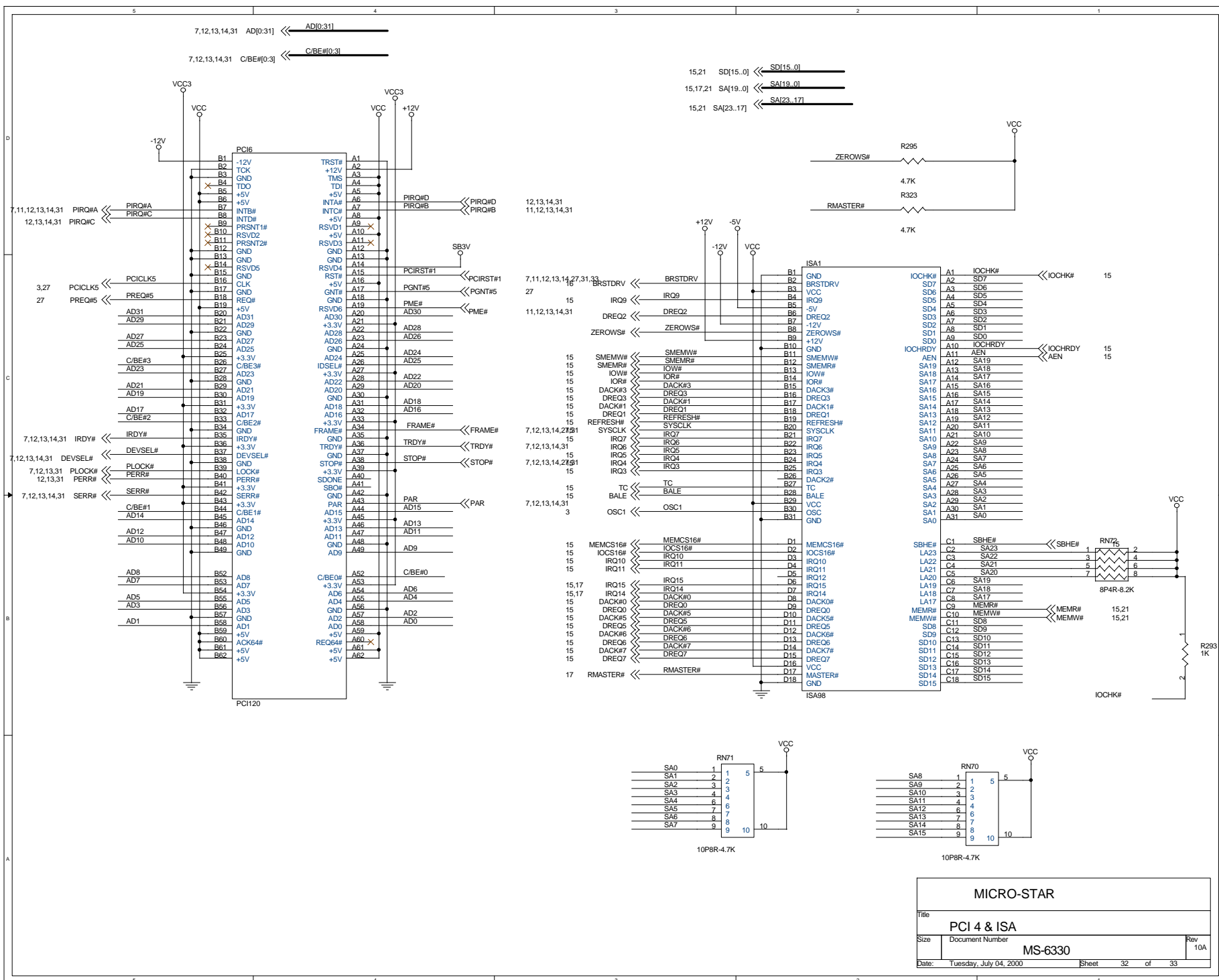


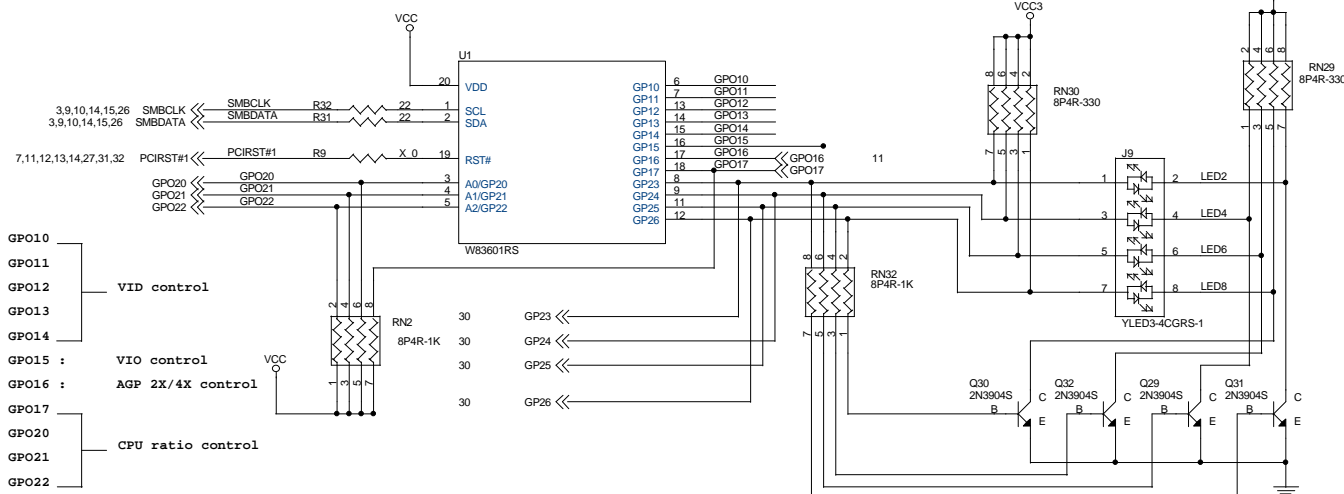
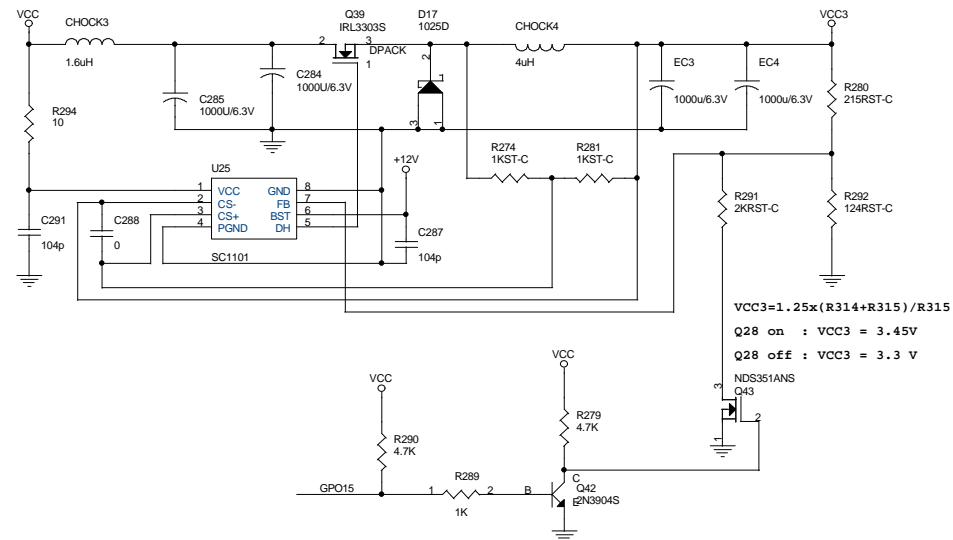
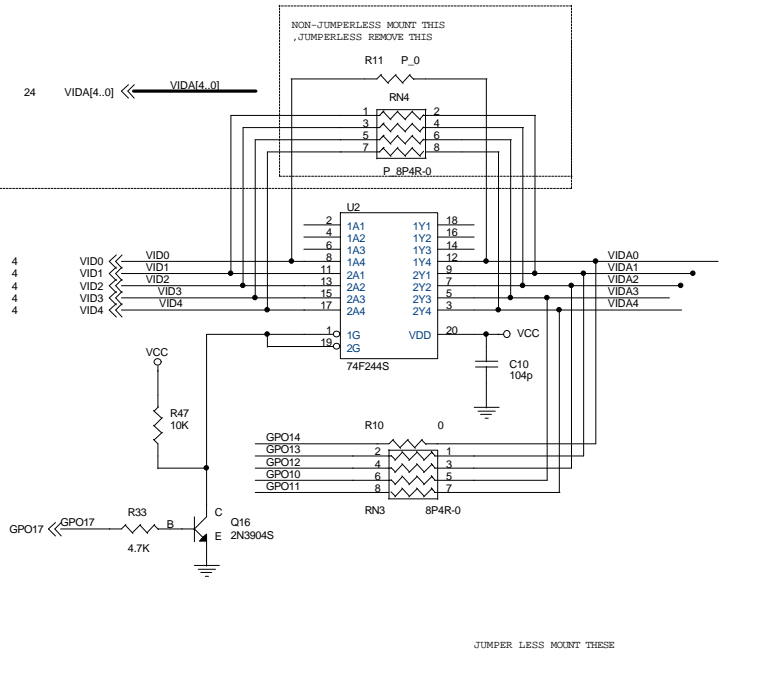
MICRO-STAR			
Title			
PCI MASTER PAL DEVICE			
Size	Document Number	MS-6330	Rev 10A
Date: Tuesday, July 04, 2000	Sheet 27 of 33		











MICRO-STAR		
Title	WINDOND 601	
Size	Document Number	Rev 10A
Date	Tuesday, July 04, 2000	Sheet 33 of 33