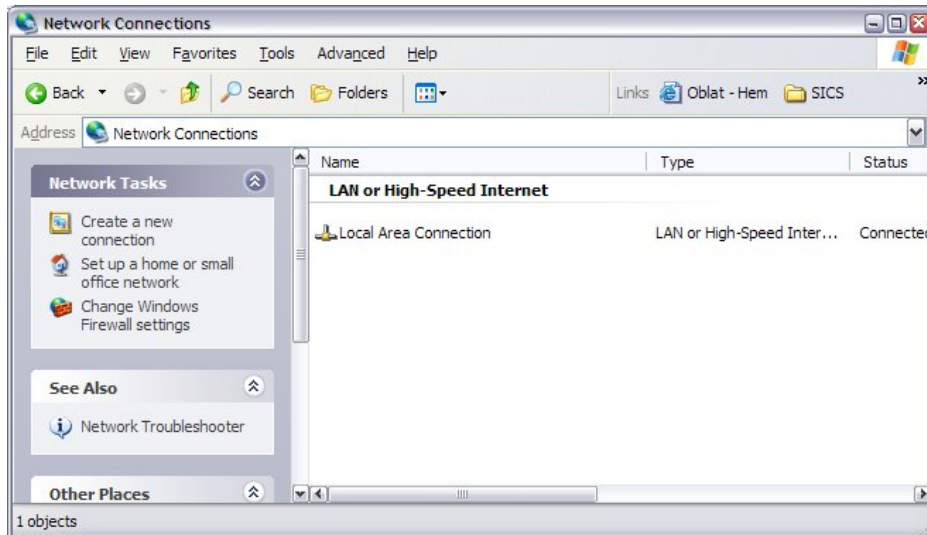


1 Configuring SLIP under Windows XP

This section describes how to setup a SLIP connection under Windows. A SLIP connection forwards TCP/IP traffic to/from the sensor nodes and lets you communicate with them using standard network tools such as ping.

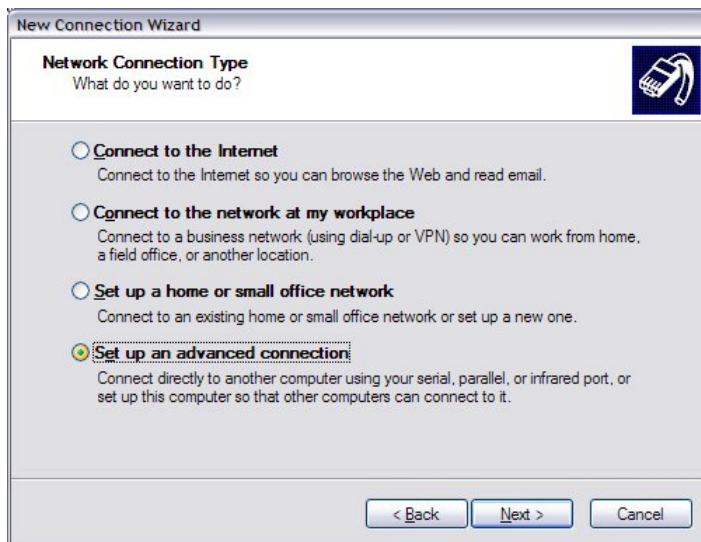
1. Click start button and choose 'My Computer'. Right-click 'My Network Places' and choose 'Properties'.



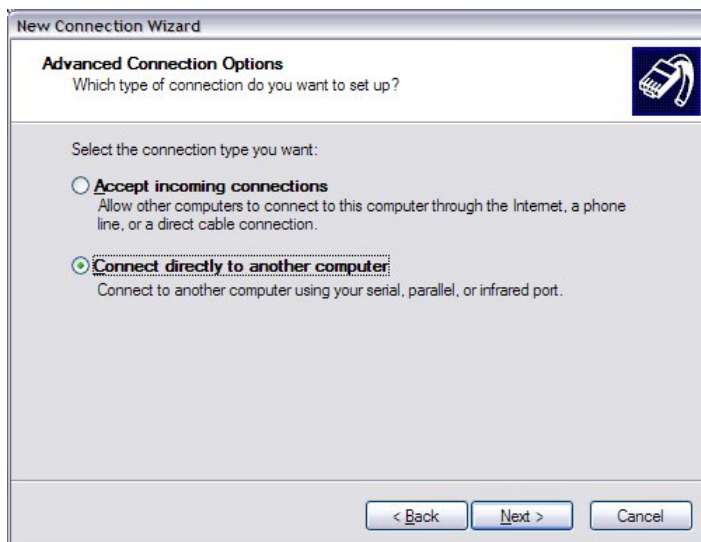
2. Click 'Create a new connection'.



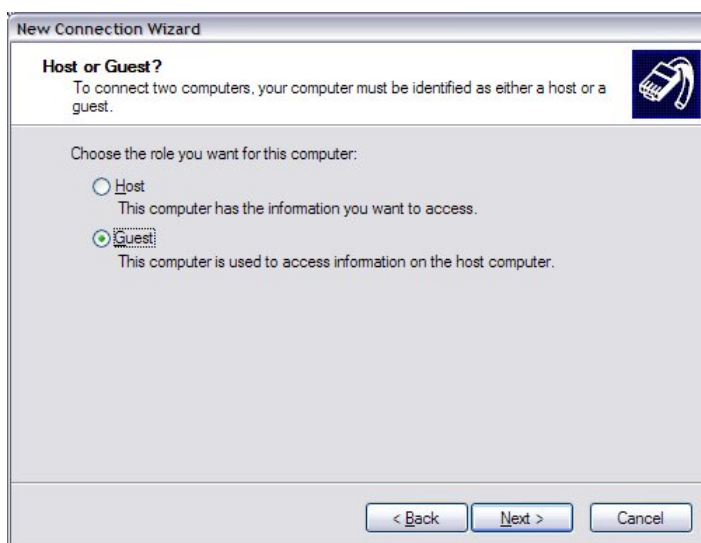
3. Select 'Set up an advanced connection'.



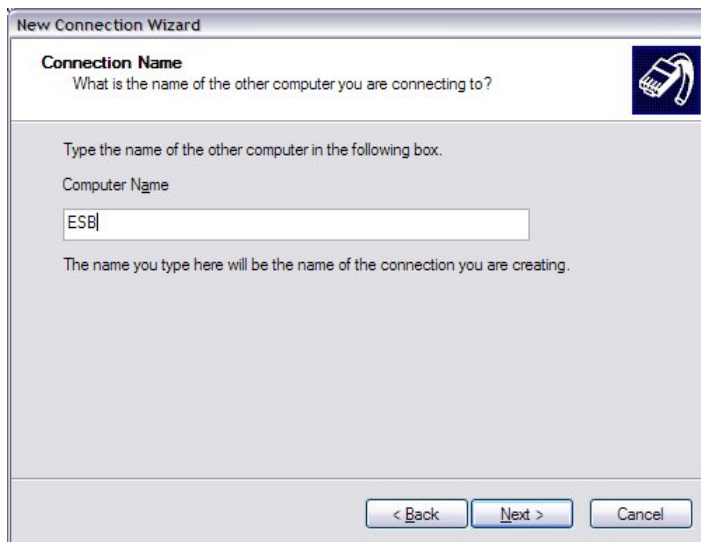
4. Select 'Connect directly to another computer'.



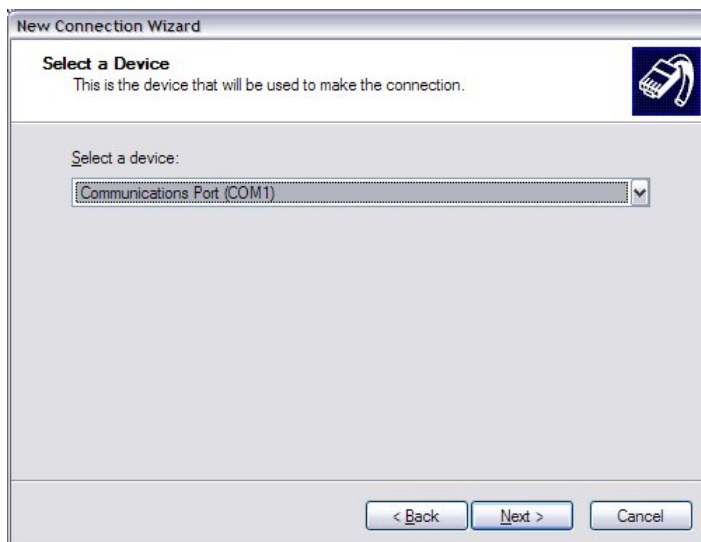
5. Select 'Guest'



6. Select a name for the slip connection (for example 'ESB')



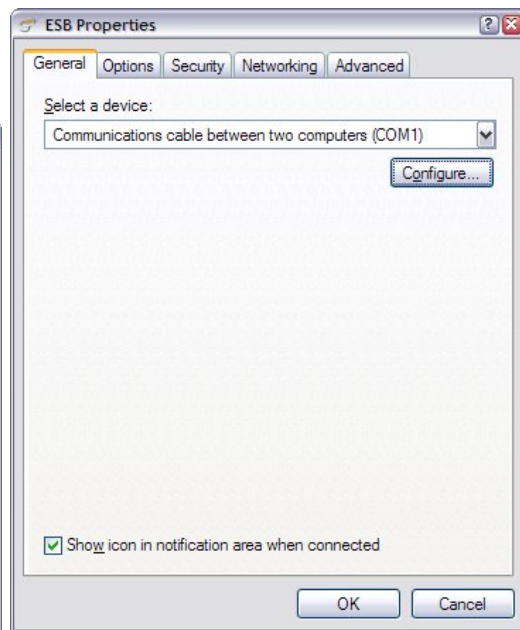
7. Select the serial port to use when communicating with the sensor node.



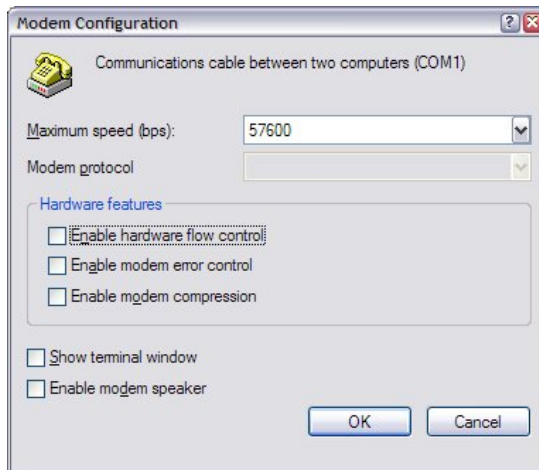
8. Add the connection by clicking 'Finish'.



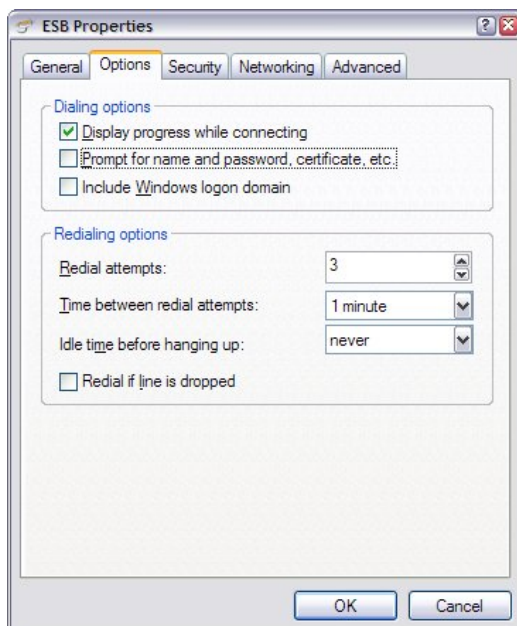
9. A connection window will open. Choose 'Properties'.



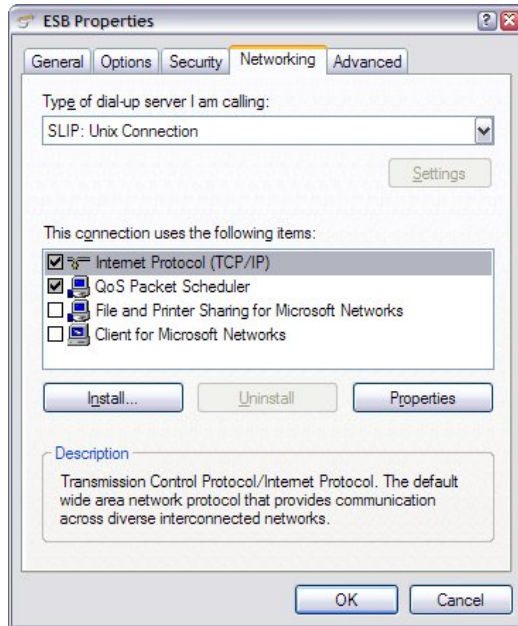
10. . Click on 'Configure...' and deselect all selected buttons. Choose the speed 57600 bps.



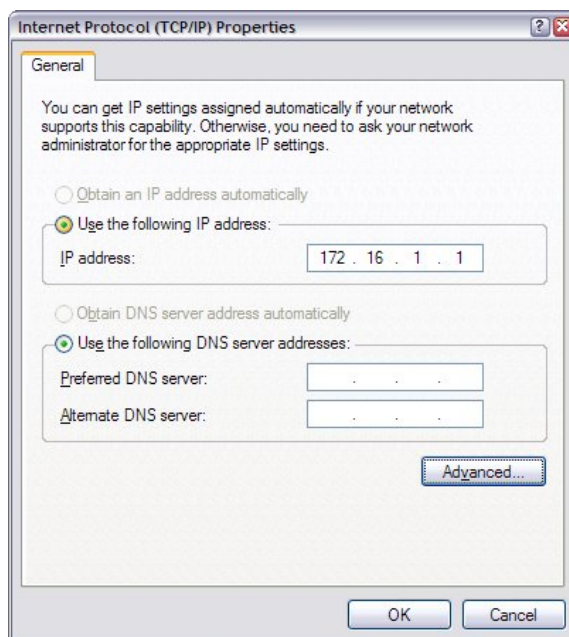
11. . Close the modem configuration window, and go to the 'Options' tab in the ESB properties. Deselect all except 'Display progress...'.



12. Go to the 'Networking' tab. Change to 'SLIP: Unix Connection' and deselect all except the first two items in the connection item list.



13. Select 'Internet Protocol (TCP/IP)' and click 'Properties'. Enter the IP address '172.16.1.1'.



14. Click 'Advanced' and deselect all checkboxes in the 'Advanced TCP/IP Settings'. Go to the 'WINS' tab and deselect 'Enable LMHOSTS lookup' if it is selected. Also select 'Disable NetBIOS over TCP/IP'.

