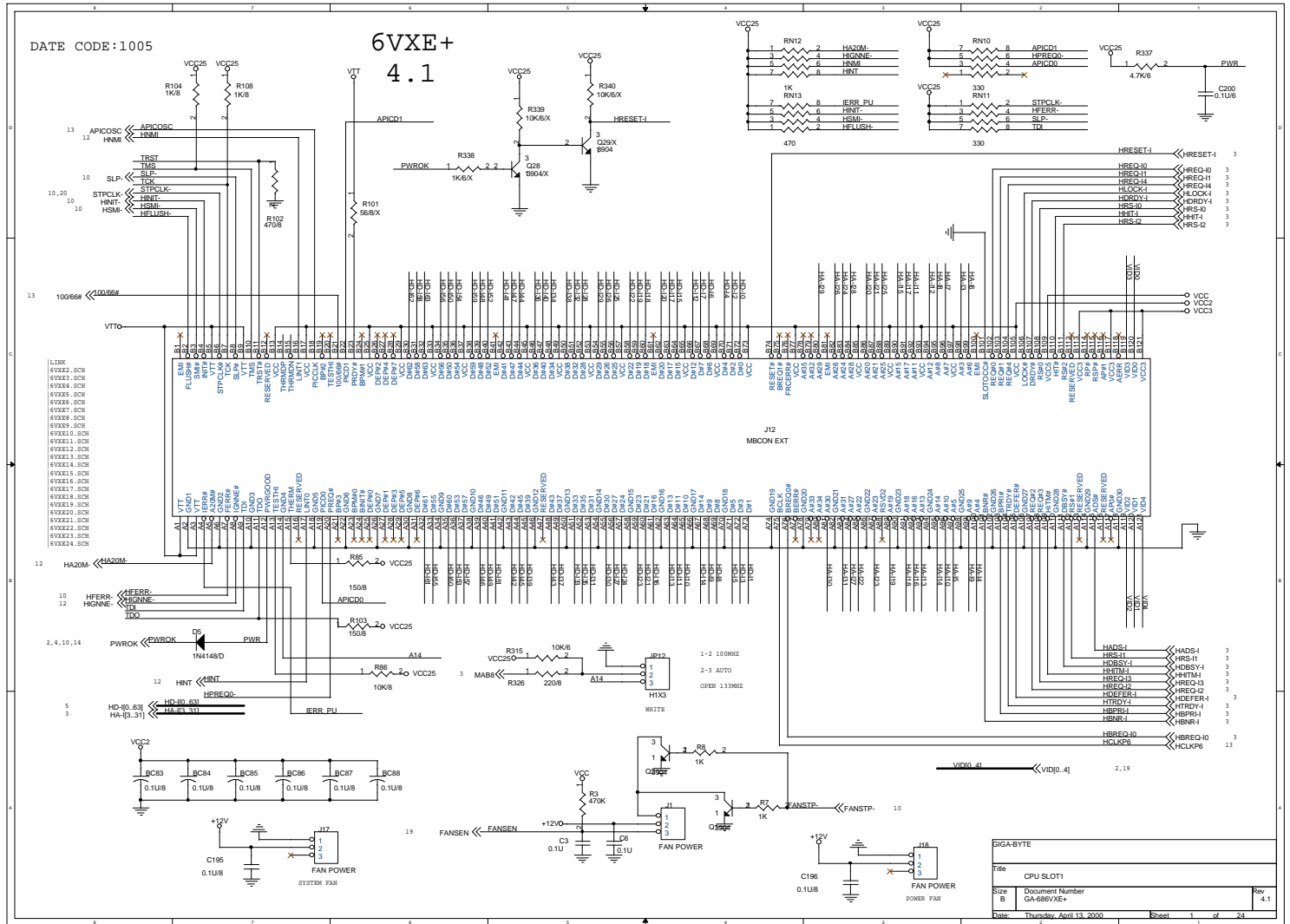
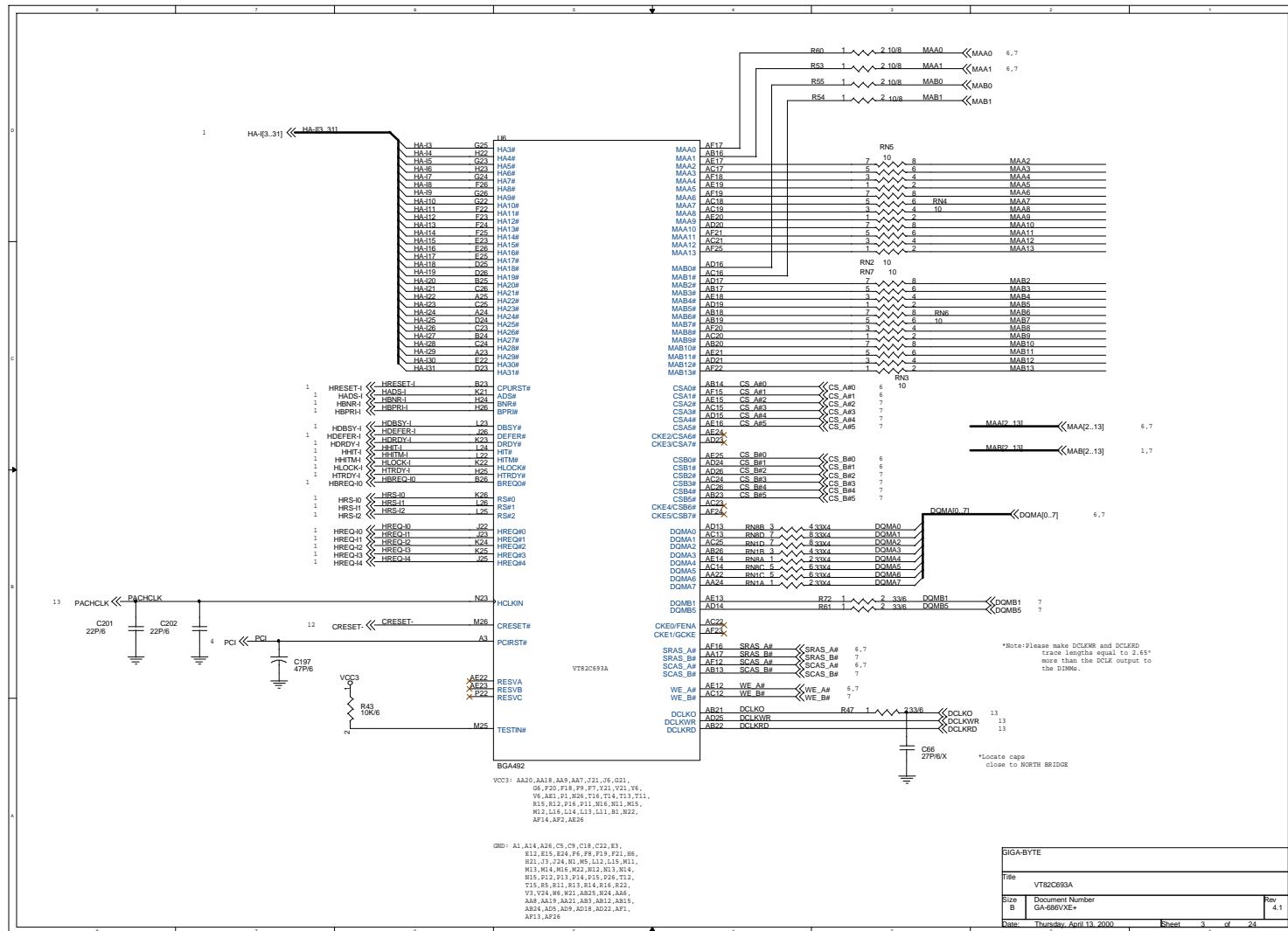
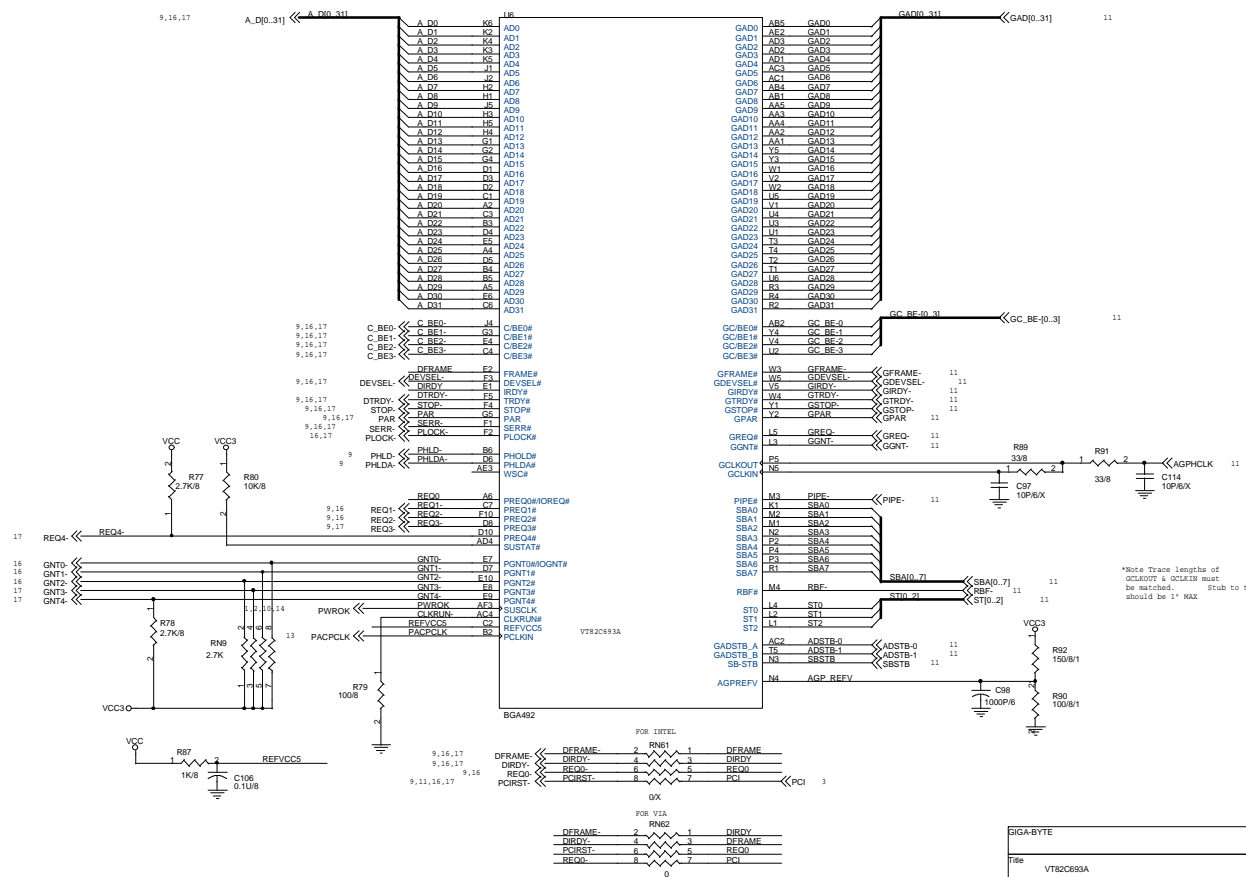
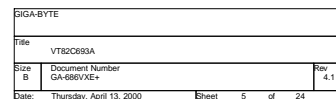


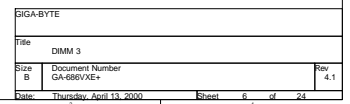
$$6VXE + 4.1$$


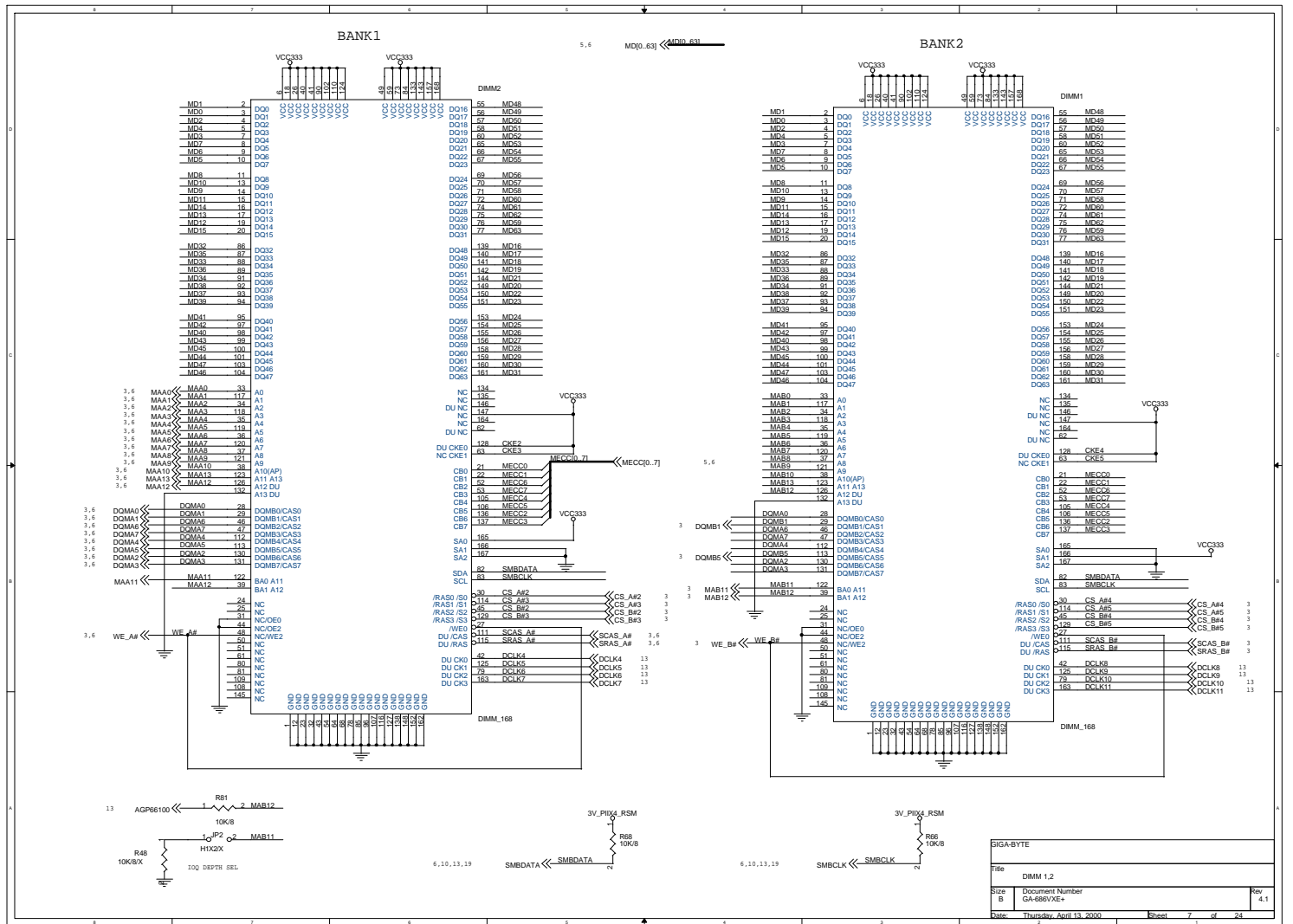




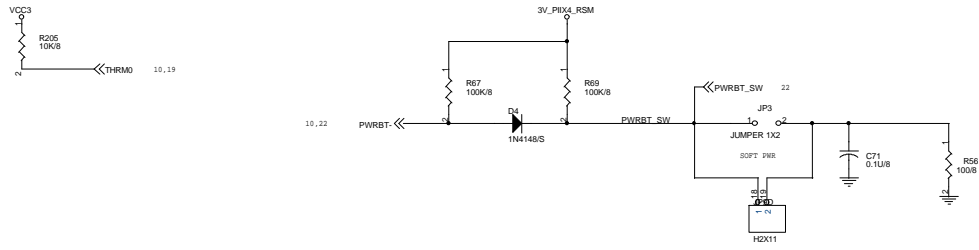
GIGA-BYTE			
Title VT82C693A			
Size B	Document Number GA-686VXE+		Rev 4.1
Date:	Thursday, April 13, 2000	Sheet	4 of 24



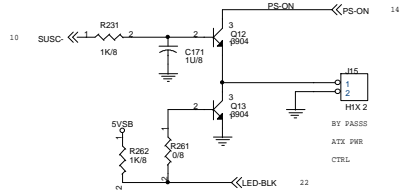




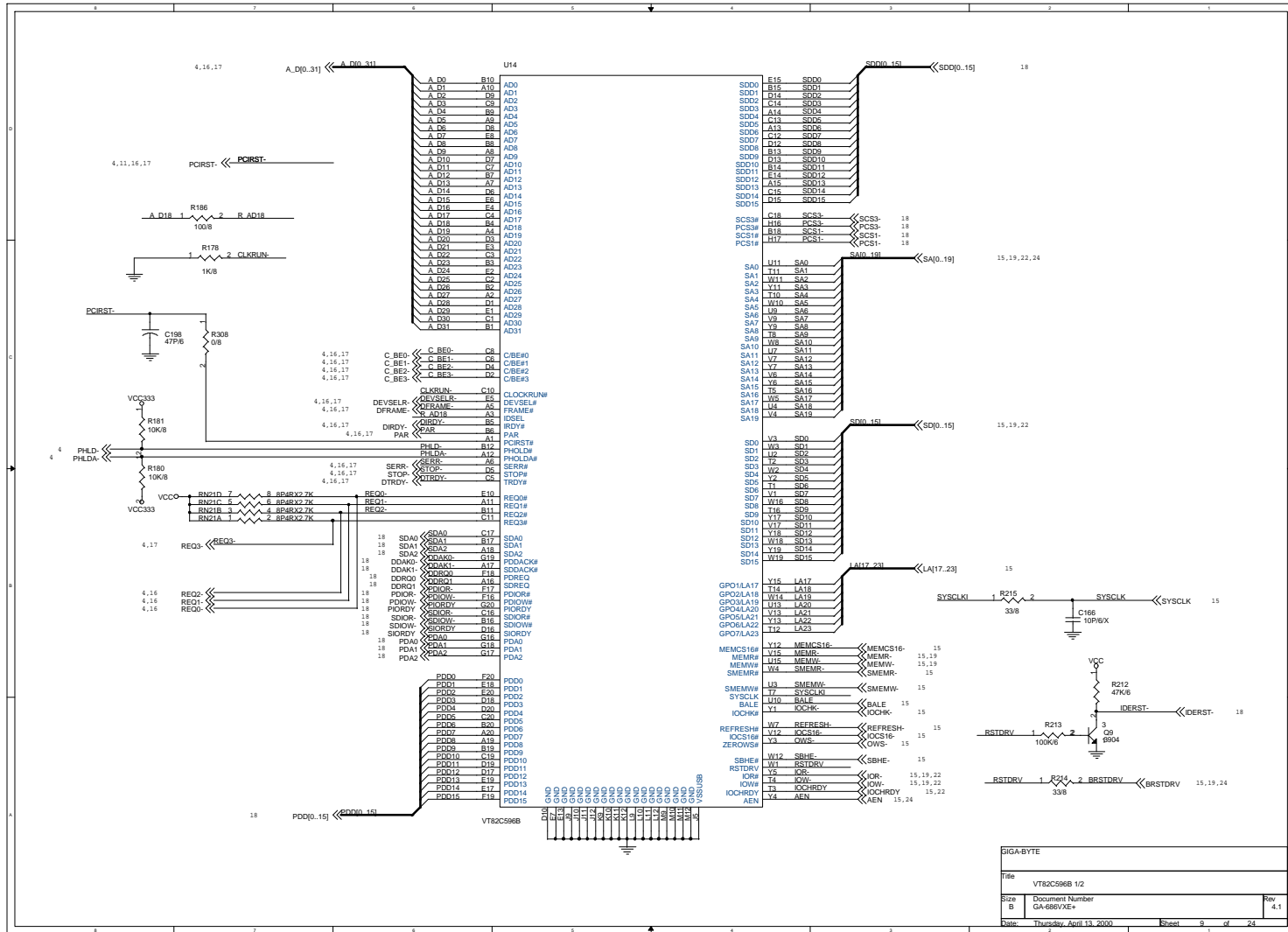
SIGNAL BYTE			
File	DIMM 1.2		
Size	Document Number	GA-686VXE+	Rev 4.1
Date:	Thursday, April 10, 2008	Sheet 7	of 24

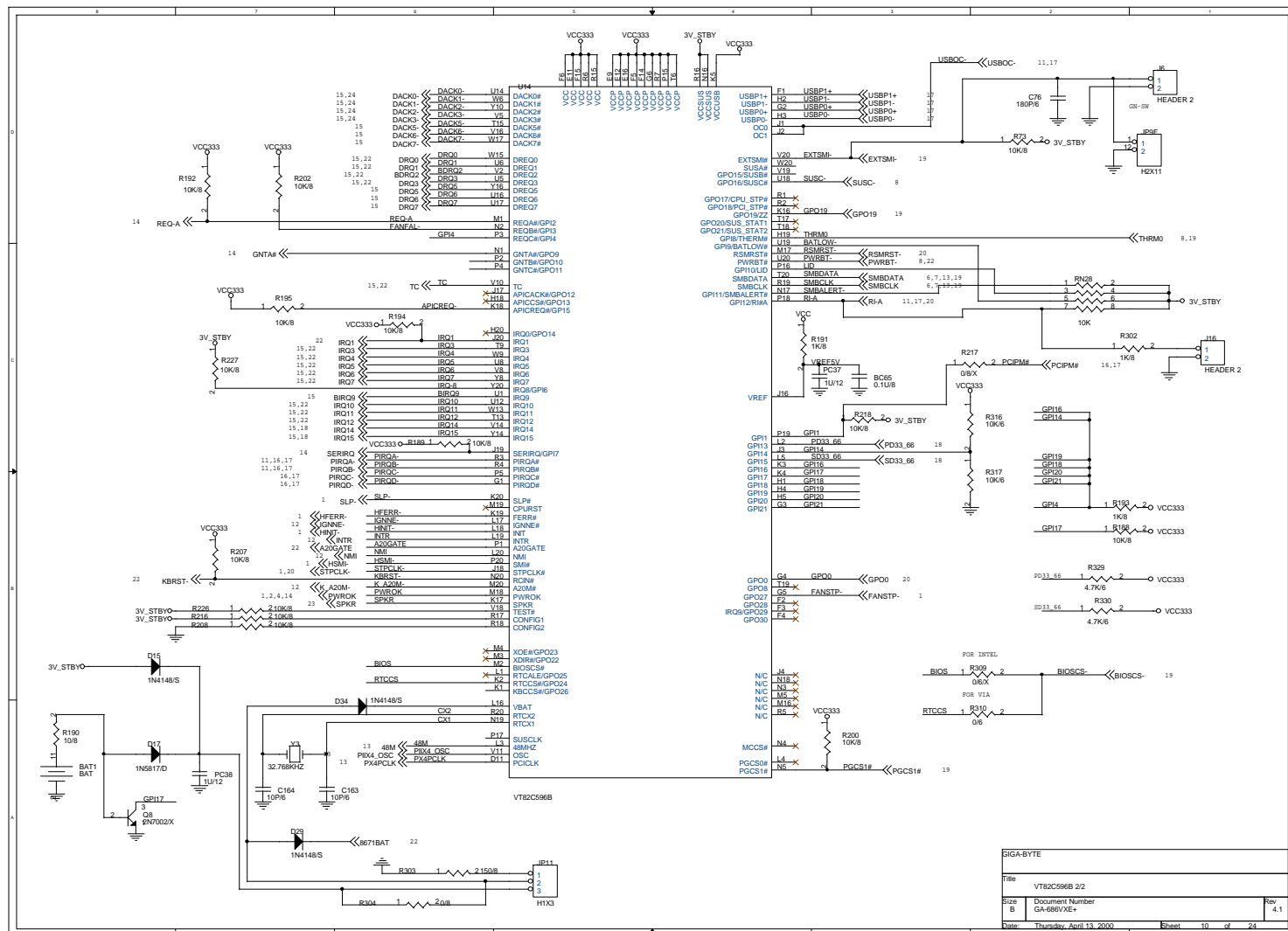


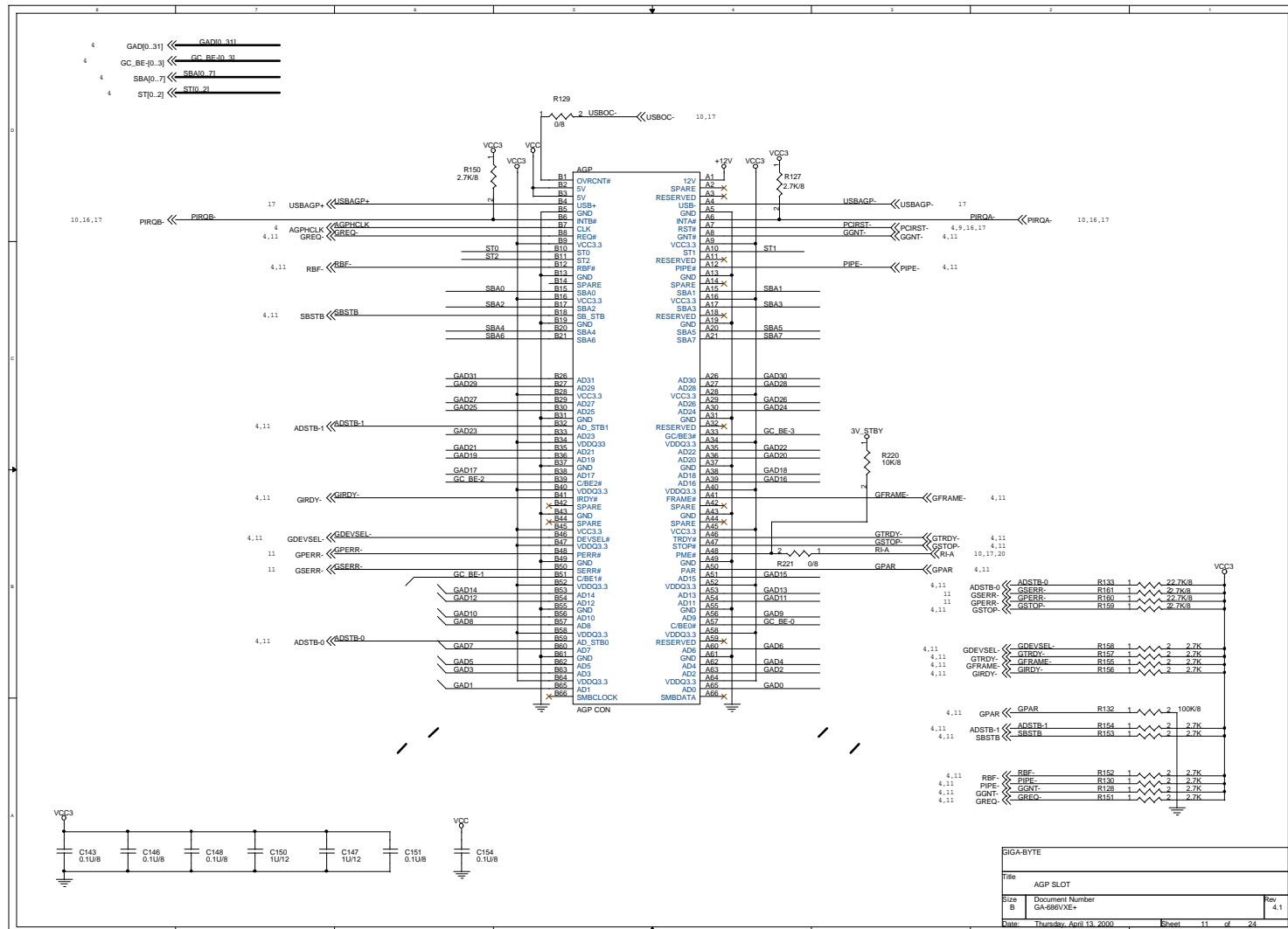
SOFT FULL ON

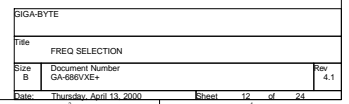


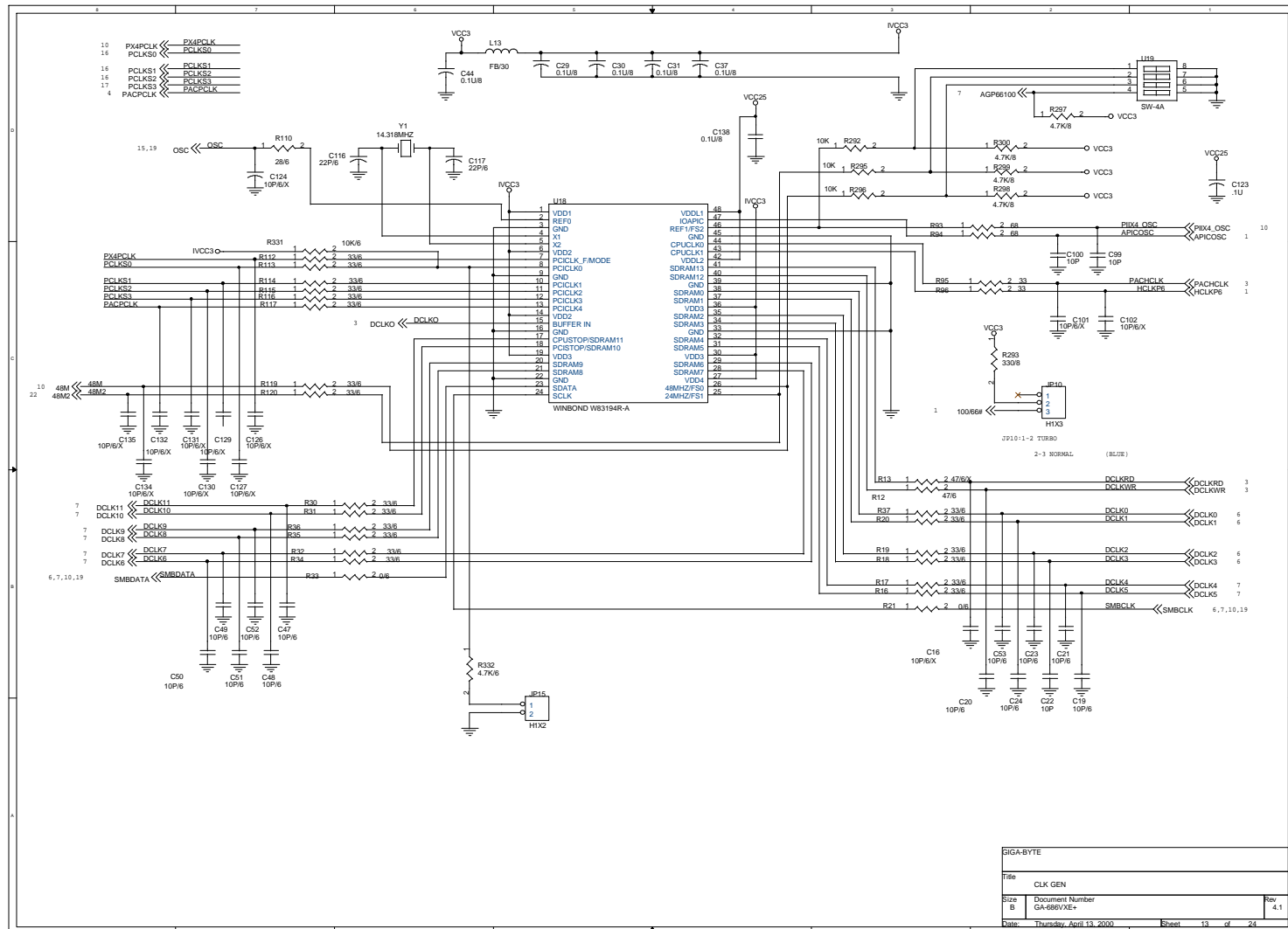
GIGABYTE		
Title	ATX PWR CTRL	
Size B	Document Number GA-686VXE+	Rev 4.1
Date: Thursday, April 13, 2000	Sheet 8 of 24	

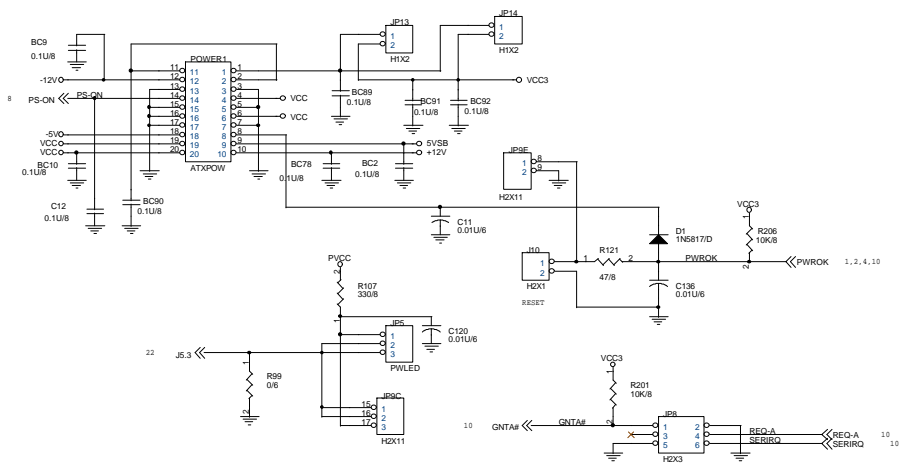




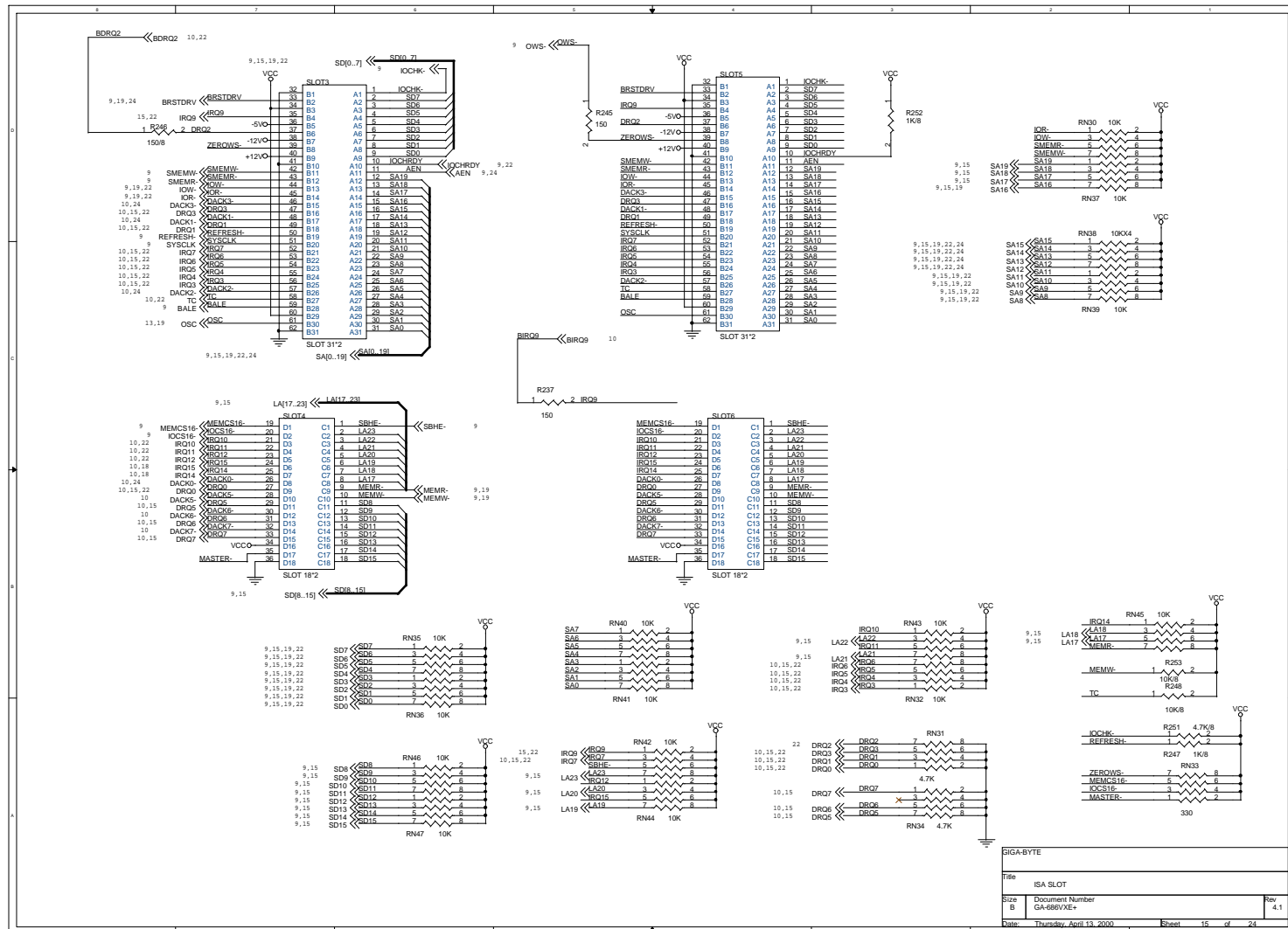


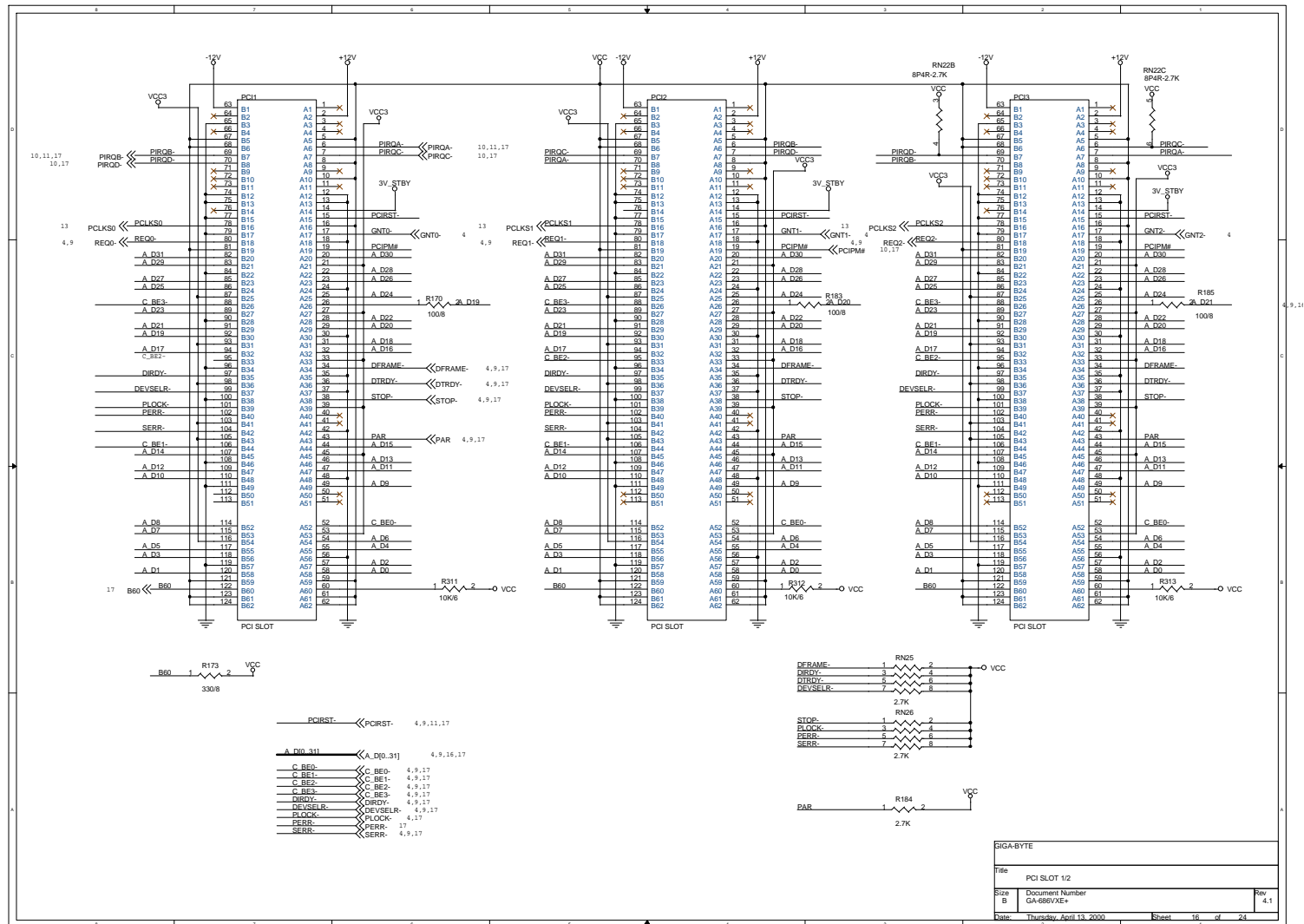


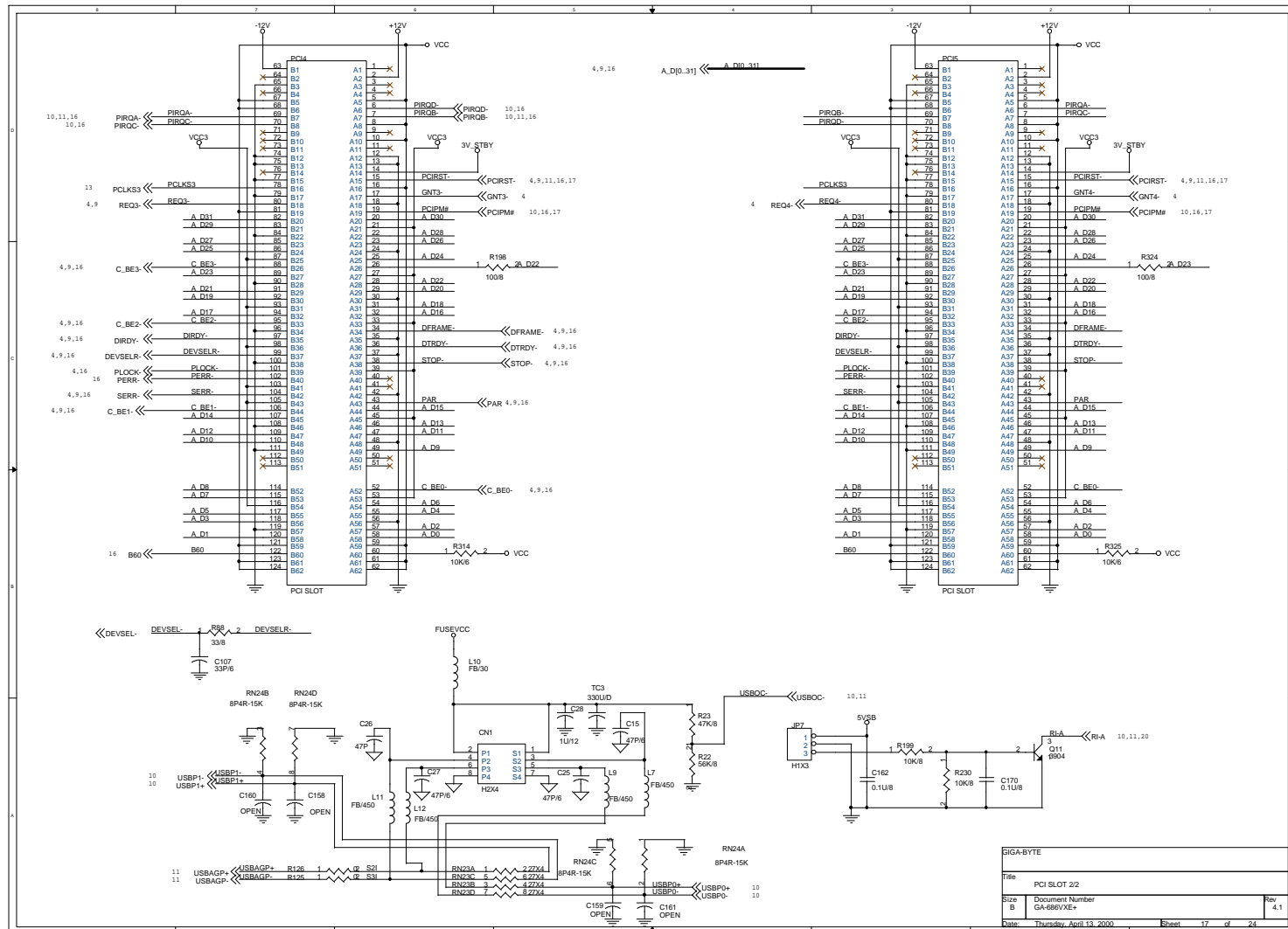


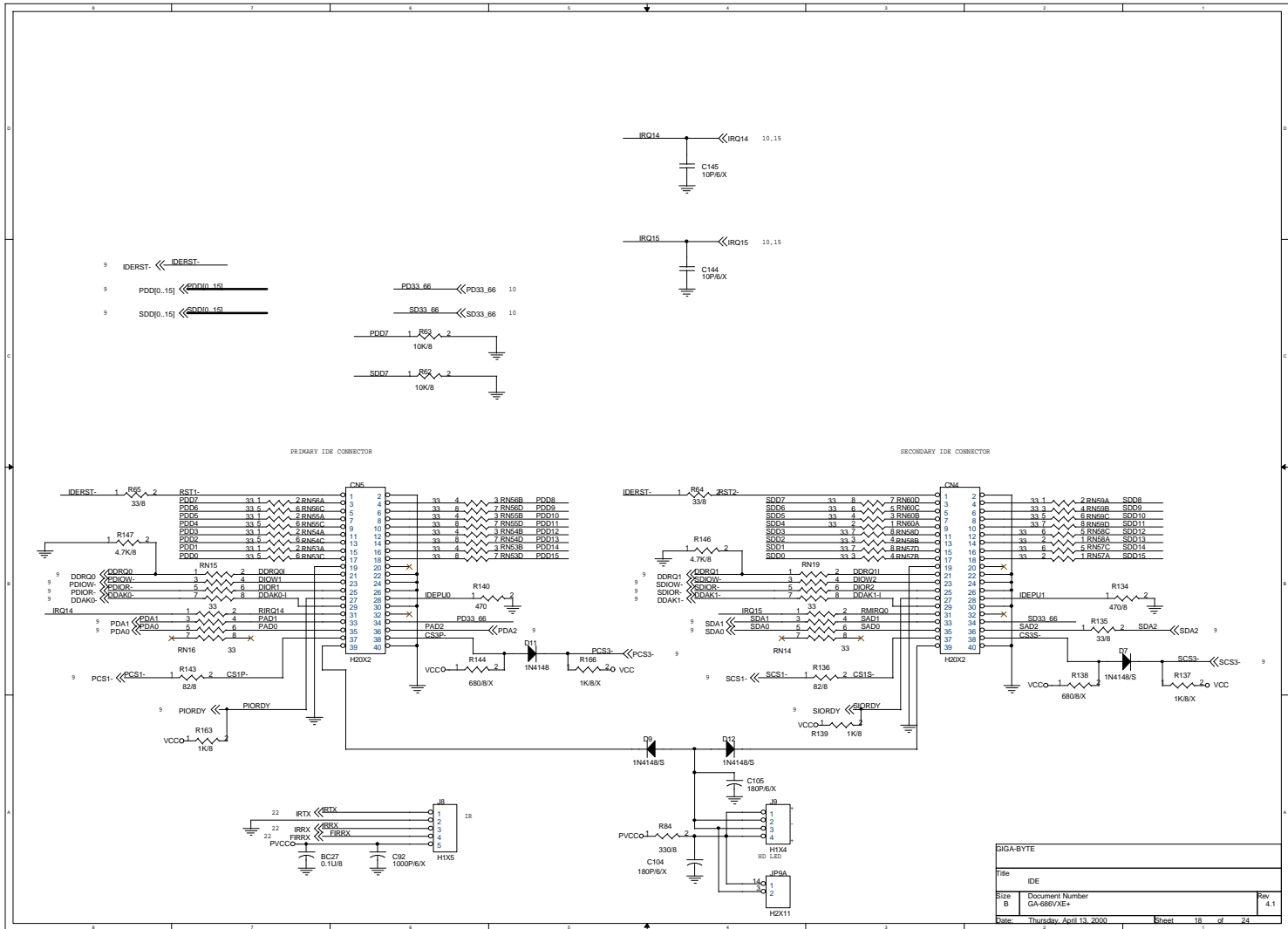


SIO-BYTE		
Title POWER CONNECTOR		
Size B	Document Number GA-686VXE+	Rev 4.1
Date: Thursday, April 13, 2000 Sheet 14 of 24		



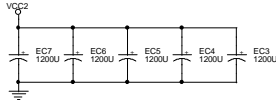
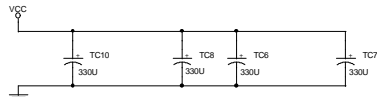
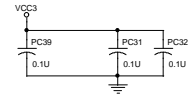
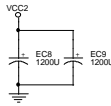
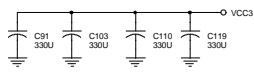
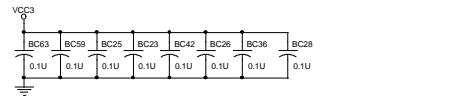
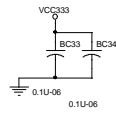
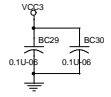
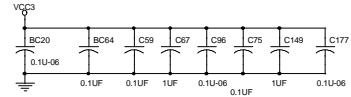
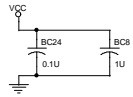
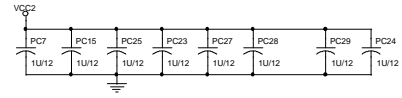
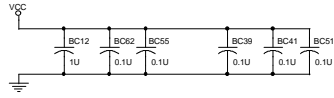
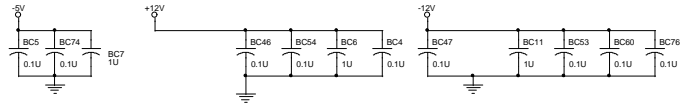
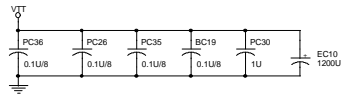






SIGNAL			
Title	IDE		
Size	Document Number	Rev	
B	GA-686VXE+	4.1	
Date	Thursday, April 13, 2000	Sheet	18 of 24

GIGA-BYTE			
Title GREEN			
Size B	Document Number GA-686VXE+		Rev 4.1
Date: Thursday, April 13, 2000	Sheet 20	of 24	



SUGABYTE		
Title	BYPASS CAPACITOR	
Size	Document Number	Rev
B	GA-686VXE+	4.1
Date:	Thursday, April 13, 2000	Sheet 21 of 24

