



## **User's Guide**

### **HP iPAQ Bluetooth Stereo Headphones**

Document Part Number: 378962-002

**November 2004**

© 2004 Hewlett-Packard Development Company, L.P.

Microsoft and Windows are trademarks of Microsoft Corporation in the U.S. and/or other countries. Intel is a trademark of Intel Corporation in the U.S. and/or other countries.

The information contained herein is subject to change without notice. The only warranties for HP products and services are set forth in the express warranty statements accompanying such products and services. Nothing herein should be construed as constituting an additional warranty. HP shall not be liable for technical or editorial errors or omissions contained herein.

User's Guide

HP iPAQ Bluetooth Stereo Headphones

First Edition (November 2004)

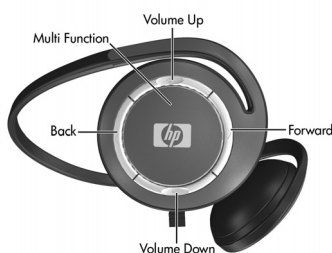
Document Part Number: 378962-002



**WARNING:** Do not wear HP iPAQ Bluetooth Stereo Headphones:

- While operating a motor vehicle
  - In an area in which it is dangerous for your hearing to be impaired
  - While the Headphones are plugged into a power outlet
- 

## Getting to Know Your HP iPAQ Bluetooth Stereo Headphones



Button	Function
Forward	Tap to track forward to the next media file in the playlist.
Back	Tap to track backward to the previous file in the playlist.
Volume Up	Press to increase the volume in the headphones.

---

Button	Function
Volume down	Press to decrease the volume in the headphones.
Multi Function	<ul style="list-style-type: none"><li>• Press and hold for fifteen seconds to put headphones in pairing mode.</li><li>• Press and hold for three seconds to turn headphones on or off.</li><li>• Press to pause/unpause audio.</li><li>• After initial Bluetooth pairing, press to reestablish connection.</li></ul>

---



## Installing the Headphones Driver

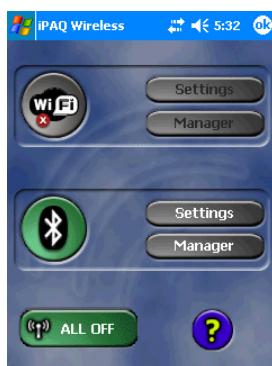
1. Perform a soft reset on your HP iPAQ Pocket PC by pressing the Reset button on the back or bottom of the device. For more information on performing a soft reset, refer to the *User's Guide* that came with your HP iPAQ Pocket PC.
2. Backup your iPAQ Pocket PC using ActiveSync before installing the Headphones driver. If the Bluetooth Radio on your Pocket PC is on, turn it off.
3. Establish a connection from your iPAQ Pocket PC to your desktop computer via ActiveSync. Refer to the *User's Guide* that came with your iPAQ Pocket PC for instructions.
4. Place the CD that came with your HP iPAQ Bluetooth Stereo Headphones into an optical drive on your computer.
5. Click the button that reads “**Click Here to Install Software**” and follow the instructions on your screen. If asked to reset your Pocket PC, tap **Reset Now**.
6. Once the unit is reset, the driver is installed.
7. Backup your iPAQ Pocket PC using ActiveSync. Select a different filename name from the backup you performed just before you installed the driver.

---

# Pairing the Headphones with a Pocket PC

Before you can use the HP iPAQ Bluetooth Stereo Headphones, you must first pair them with an iPAQ Pocket PC with Bluetooth. To pair your headphones to a Pocket PC:

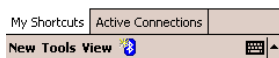
1. Make sure the batteries are charged on both the headphones and the HP iPAQ Pocket PC.
2. Make sure the headphones are turned off by pressing the Multi Function button in the center of the right earpiece of the headphones for about three seconds until the light flashes red and goes off.
3. On your Pocket PC, tap the **iPAQ Wireless** icon on the bottom right of the screen  or, for older models, tap the Bluetooth icon   
Bluetooth icon
4. Turn on the Bluetooth Radio by tapping the Bluetooth icon. For older iPAQ Pocket PCs, turn on the Bluetooth Radio by tapping selecting “Turn Bluetooth ON” from the dropdown box in the bottom right corner of the screen.



5. Tap the **Manager** button in the Bluetooth section of the screen. For older iPAQ Pocket PC Models, tap the Bluetooth icon at the bottom right of the screen, and open the Bluetooth Manager. The following screen should appear:



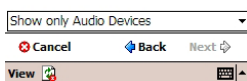
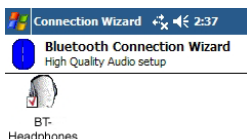
Tap New to access other devices via Bluetooth



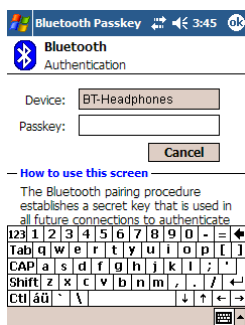
6. On the headphones, press and hold the Multi Function button in the center of the right earpiece for ten to fifteen seconds until the light flashes red and blue.
7. The headphones are now in Pairing Mode. Release the button. The light will continue to flash red and blue.
8. On the HP iPAQ Pocket PC, select **New**, then **High Quality Audio Setup** from connection types.



9. An icon will appear for the **BT Headphones**. Tap this icon.



10. When your device discovers the headphones for the first time, you will be prompted for a Passkey. The Passkey is 0000



11. Tap **OK**.
12. Tap **Finish**.
13. When pairing is successful, the LED on the headphones will flash blue.
14. If no pairing occurs in the next two minutes, the headphones will return to stand-by mode, and the LED will flash blue.

---

## Reestablishing Connection to the Headphones

Once your headphones have made an initial pairing with the iPAQ Pocket PC, you can reestablish the connection easily:

1. Verify that the iPAQ Pocket PC Bluetooth Radio is turned on.
2. Turn on the headphones by holding down the Multi Function button for about two seconds, until the blue light flashes.
3. On the iPAQ Pocket PC, play the audio file.
4. Press the Multi Function button on the right earpiece of the headphones. They will re-connect with the Pocket PC and you will hear audio through the headphones.

---

**Note:** You can also reconnect the headphones with the iPAQ pocket PC by going to the Bluetooth Manager and double tapping the High Quality Audio on BT-Headphones

---

## Turning the Headphones On and Off

To turn the Bluetooth Headphones on, push and hold the Multi Function button for two seconds until the blue light flashes.

To turn the Bluetooth Headphones off, press and hold the Multi Function button for two seconds, until the light flashes red and goes off.

## Using the HP iPAQ Bluetooth Stereo Headphones

To play a song or other audio file, ensure that the headphones have a Bluetooth connection with the Pocket PC and simply play the file on your iPAQ Pocket PC.



---

To pause audio, press the Multi Function button

To resume play, press the Multi Function button again.

To track forward, press the Forward button, marked “>”

To track backward, press the Back button marked “<”

To increase the volume, press the Volume Up button marked “+”

To decrease the volume, press the Volume Down button marked “-”

## Charging the Headphones

---

Note: Headphone batteries are not user replaceable.

---

To charge the HP iPAQ Bluetooth Stereo Headphones:

1. Turn off the headphones by pressing the Multi Function button and holding until the light flashes red and goes off.
2. Connect the Headphones to the power adapter.



3. Plug the power adapter into an electrical outlet. The amber light will come on while the headphones are charging.
4. When the headphones are fully charged, the light goes off. The headphones may take up to four hours to fully charge.

---

## Before Calling Technical Support

Perform a Soft Reset on the HP iPAQ Pocket PC by pressing the Reset button on the back or bottom of the HP iPAQ Pocket PC. For instructions, see the User's Guide which came with your HP iPAQ Pocket PC.

Perform a Soft Reset on the HP iPAQ Bluetooth Stereo Headphones by placing the tip of the stylus into the round hole next to the charging connector on the headphones.

## Technical Support on the Internet

Support services are available on the Internet through the HP Support Forum. You can either browse the postings as a guest, or register as a user and submit your own questions. HP responds to questions within one business day. To access the HP Support Forum, go to the HP website at <http://www.hp.com/support/>

---

## Preparing to Call Technical Support

If you cannot solve a problem using the tips in this guide or the HP Support Forum, you may need to call technical support. Contact your local HP authorized dealer, reseller, or service provider for the technical support number in your area.

To receive the fastest possible solution when you call, have the following available:

- The Headphones and your Bluetooth device
- Serial numbers for both devices
- Purchase date on your invoice
- Conditions under which the problem occurred
- Error messages that might have appeared
- Hardware configuration information
- Hardware and software you are using

---

## Wireless Notices

In some environments, the use of wireless devices may be restricted. Such restrictions may apply aboard airplanes, in hospitals, near explosives, in hazardous locations, etc. If you are uncertain of the policy that applies to the use of this device, please ask for authorization to use it prior to turning it on.



---

**WARNING:** Exposure to Radio Frequency Radiation

The radiated output power of this device is below the FCC radio exposure limits. Nevertheless, the device should be used in such a manner that the potential for human contact during normal operation is minimized.

---

## FCC Modifications

The FCC requires the user to be notified that any changes or modifications made to this device that are not expressly approved by Hewlett-Packard Company may void the user's authority to operate the equipment.

## FCC Notice

This equipment has been tested and found to comply with the limits for a Class B digital device, pursuant to Part 15 of the FCC Rules. These limits are designed to provide reasonable protection against harmful interference in a residential installation. This equipment generates, uses, and can radiate radio frequency energy and, if not installed and used in accordance with the instructions, may cause harmful interference to radio communications. However, there is no guarantee that interference will not occur in a particular installation. If this equipment does cause harmful interference to radio or television reception, which

---

can be determined by turning the equipment off and on, the user is encouraged to try to correct the interference by one or more of the following measures:

- Reorient or relocate the receiving antenna.
- Increase the separation between the equipment and the receiver.
- Connect the equipment into an outlet on a circuit different from that to which the receiver is connected.
- Consult the dealer or an experienced radio or television technician for help.

## **FCC Notice**

This device complies with part 15 of the FCC rules. Operation is subject to the following two conditions: (1) this device may not cause harmful interference, and (2) this device must accept any interference, including interference that may cause undesired operation of the device.

## **Canadian Notice**

Operation is subject to the following two conditions: (1) this device may not cause interference, and (2) this device must accept any interference, including interference that may cause undesired operation of the device.

## **European Union Regulatory Notice**

This product complies with the following EU Directives:

- Low Voltage Directive 73/23/EEC
- EMC Directive 89/336/EEC

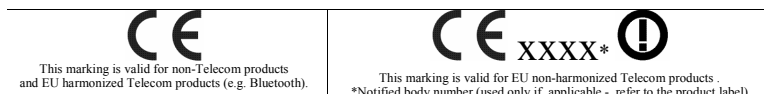


**Note:** CE Compliance of this product is valid only if powered with the correct HP-provided and CE marked AC Adapter.

If this product has telecommunication functionality, it also complies with the essential requirements of:

■ R&TTE Directive 1999/5/EC

Compliance with these directives implies conformity to applicable harmonized European standards (European Norms) which are listed on the EU Declaration of Conformity issued by Hewlett-Packard for this product or product family. This compliance is indicated by the following conformity marking placed on the product:



The telecommunications functionality of this product may be used in the following EU and EFTA countries: Austria, Belgium, Cypress, Czech Republic, Denmark, Estonia, Finland, France, Germany, Greece, Hungary, Iceland, Ireland, Italy, Latvia, Lichtenstein, Lithuania, Luxembourg, Malta, Netherlands, Norway, Poland, Portugal, Slovak Republic, Slovenia, Spain, Sweden, Switzerland, and United Kingdom.

## Notice to France and Italy for Use of 2.4 GHz Wireless Communication:

Italy:

E'neccessaria una concessione ministeriale anche per l'uso del prodotto. Verifici per favore con il proprio distributore o direttamente presso la Direzione Generale Pianificazione e Gestione Frequenze.

---

Lisence required for use. Verify with your dealer or directly with General Direction for Frequency Planning and Management (Direzione Generale Pianificazione e Gestione Frequenze).

France:

L'utilisation de cet equipment (2.4 GHz Wireless LAN) est soumise a certaines restrictions: Cet Equipment peut etre utilise a L'interieur d'un batiment en utilisant toutes les frequences de 2400 a 2483.5 MHz (Chaine 1-13). Pour une utilisation en environment sxterieur, vous devez utiliser les frequences comprises entre 2454-2483.5 MHz (Chaine 10-13). Pour les Dernieres restrictions, voir <http://www.art-telecom.fr>

For 2.4 GHz Wireless LAN operatin of this product, certain restrictions apply: This product may be used indoors for the entire 2400-2483.5 MHz frequency band (channels 1-13). For outdoor use, only 2454-2483.5 MHz may be used. For the latest requirements, see <http://www.art-telecom.fr>.

## **Brazilian Regulatory Notice**

Este equipamento opera em caráter secundário, isto é, não tem direito a proteção contra interferência prejudicial, mesmo de estações do mesmo tipo, e não pode causar interferência a sistemas operando em caráter primário.

# Japanese Regulatory Wireless Notice

## 2.4 FH 2

この機器の使用周波数帯では、電子レンジ等の産業・科学・医療用機器のほか工場の製造ライン等で使用されている移動体識別用の構内無線局（免許を要する無線局）及び特定小電力無線局（免許を要しない無線局）が運用されています。

- 1 この機器を使用する前に、近くで移動体識別用の構内無線局及び特定小電力無線局が運用されていないことを確認して下さい。
- 2 万一、この機器から移動体識別用の構内無線局に対して電波干渉の事例が発生した場合には、速やかに使用周波数を変更するか又は電波の発射を停止した上、下記連絡先にご連絡頂き、混信回避のための処置等（例えば、パーティションの設置など）についてご相談して下さい。
- 3 その他、この機器から移動体識別用の特定小電力無線局に対して電波干渉の事例が発生した場合など何かお困りのことが起きたときは、次の連絡先へお問い合わせ下さい。

連絡先：日本ヒューレット・パカード株式会社 TEL：0120-014121



Batterij niet  
weggoien,  
maar inleveren  
als KCA.



廃電池請回収



---

## Battery Warning



**WARNING:** This device contains a lithium ion rechargeable battery. To reduce the risk of fire or burns, do not disassemble, crush, puncture, short external contacts, or dispose of in fire or water

---

**WARNING:** To reduce the risk of personal injury, electrical shock, fire or damage to the equipment:

- Plug the AC Adapter into an electrical outlet that is easily accessible at all times.
  - Disconnect power from the equipment by unplugging the AC Adapter from the electrical outlet or unplugging the Synchronization cable from the host computer.
  - Do not place anything on the AC Adapter cord or any of the other cables. Arrange them so that no one may accidentally step on or trip over them.
  - Do not pull on a cord or cable. When unplugging from the electrical outlet, grasp the cord by the plug or, in the case of the AC Adapter, grasp the AC Adapter and pull out from the electrical outlet.
  - Do not use converter kits sold for appliances to power your iPAQ Pocket PC.
-