



EtherCard PLUS Elite16 Series

.....
High performance 16-bit Ethernet local area network adapters

- *Elite16 for all coaxial wiring*
- *Elite16T for thick coaxial and unshielded twisted pair wiring*
- *Elite16 Combo for all coaxial and unshielded twisted pair wiring*

SMC®

Warranty and Service Policy

If you experience difficulty with your SMC Ethernet Network Systems Product and are unable to diagnose or correct the problem, you may return the product to your place of purchase for repair. Please be certain that your product is properly packed before shipment. If possible, use the original packaging.

Note: All SMC products are warranted only when configured in accordance with the specifications listed in the appropriate guides.

In-Warranty Service

All SMC Ethernet Network Systems Products are warranted by Standard Microsystems Corporation against defects in workmanship and materials for a period of five (5) years from date of delivery to the end user. During the warranty period, Standard Microsystems Corporation will repair or, if necessary, replace defective components at no charge. Consult your Authorized SMC Dealer or Distributor for In-Warranty Service.

This warranty does not apply if the product has been damaged by accident or misuse, or as a result of repairs or modifications made by unauthorized personnel.

No other warranty is expressed or implied. Standard Microsystems Corporation is not liable for consequential damages.

Out-of-Warranty Service

Beyond the five (5) year warranty period, Standard Microsystems Corporation will repair or replace defective components for a reasonable fee. All service work is warranted by Standard Microsystems Corporation for an additional ninety (90) day period from date of shipment of the repaired product. Consult your Authorized SMC Dealer or Distributor for service repairs.

Policy on Changes

All SMC Ethernet Network Systems Products are sold on the basis of descriptive specifications in effect at the time of sale. Standard Microsystems Corporation reserves the right

to make periodic changes or improvements to any SMC product, but has no obligation to modify or update products once sold.

Tech Support Hotline

For technical support, please contact your place of purchase. Then, if further assistance is required, call our Tech Support Department, toll-free, between 8:30 AM and 6:00 PM, E.S.T., Monday through Friday:

800-992-4762 (USA)
800-443-5345 (Canada)

Or, you may prefer to contact us through our CompuServe bulletin board. If you are a CompuServe subscriber, just type "GO SMC" at the CompuServe prompt (!) and follow the instructions to become an SMC Forum member. If not, you can obtain an access number and personal password by contacting our Tech Support Department and requesting an SMC Forum Kit.

Table of Contents

-
- 3 FCC Notice

Introduction

- 7 Ethernet Adapter Features
7 Ethernet Adapter Overview
8 LED Indicators

Quick Installation

- 14 Adapter Installation

Configuration and Installation

- 18 Steps For Installing/Configuring the Adapter
18 Avoiding Configuration Conflicts
19 Input/Output (I/O) Base Address
19 RAM Base Address
22 Memory Management Utility Conflicts
22 IRQ Level
23 Configuring the Adapter

Software Configuration Using Setup

- 28 Introduction
28 Configuring the Adapter Using the Setup Program
29 Software Configuration Procedure
30 Interactive Method

- 30 Command Line Method

Diagnostics

- 34 Before Installing the Program
34 Screen Prompts
34 Starting Diagnostics
34 Diagnostic Overview
37 Main Menu Options:
37 Set Configuration Menu
37 Set Configuration
37 Main Menu
39 Basic Adapter Test
40 Initiate/Respond to Test Messages
42 Exit to Operating System

LAN Software Installation

- 44 Driver Installation
45 To Generate a Network Server for NetWare 286 V2.2
45 Loading NetWare 286 V2.2
49 To Generate a Workstation for NetWare 286 V2.2
51 Loading DOS ODI Workstation
52 Using NET.CFG
53 To Generate a Server for NetWare 386 V3.11

- 53 Loading NetWare 386 V3.11
- 54 To Generate a Workstation Shell for NetWare 386 V3.11
- 55 To Install the LAN Manager
- 55 Loading LAN Manager V.2.0

Installing a Boot ROM

- 58 Inserting the ROM
- 58 Installing a Boot ROM
- 59 ROM Window Size and Base Address

Network Interconnections

- 62 Connecting to Thin Ethernet Cable
- 62 Thin Ethernet
- 63 Thin Ethernet Segment
- 64 Interconnecting Thin and Thick Ethernet
- 66 Connecting to Thick Ethernet Cable
- 66 Thick Ethernet
- 67 Thick Ethernet Network
- 69 10BaseT Twisted-Pair Interconnection
- 69 Link Status
- 69 Unshielded Twisted Pair
- 71 Interface Cable Wiring
- 72 Concentrators

- 72 Using StarLAN 10 Concentrators

Troubleshooting

- 76 DIAGNOSE: Basic Adapter Test
- 76 DIAGNOSE: Set Configuration
- 76 Using DIAGNOSE for Troubleshooting
- 77 DIAGNOSE: Initiate/Respond to Messages
- 78 Network Operating Software Problems
- 79 Technical Assistance

Appendices

- 82 Appendix A: Network Components and Setup
- 86 Appendix B: Specifications
- 89 Appendix C: System Configuration Chart

Index

- 91 Index

FCC Notice

This equipment has been tested and found to comply with the limits for a Class B digital device, pursuant to part 15 of the rules. Operation is subject to the following two conditions: (1) this device may not cause harmful interference, and (2) this device must accept any interference received, including interference that may cause undesired operation.

This equipment generates, uses and can radiate radio frequency energy, and, if not installed and used in accordance with the instructions, may cause harmful interference to radio communications. However, there is no guarantee that interference will not occur in a particular installation.

If interference problems do occur please consult the system equipment owner's manual for suggestions.

Some of these suggestions include relocation of the computer system away from the television or radio or placing the computer AC power connection on a different circuit or outlet.

Changes or modifications to this product without the express approval of Standard Microsystems Corporation could result in non FCC compliance, and void the users authority to operate this equipment.

This product was tested and certified with a shielded interconnecting cable; therefore, a shielded cable is required to be used with this product.

If necessary, the user should consult the dealer or an experienced radio/television technician for additional suggestions.

SMC (Standard Microsystems Corp.)
80 Arkay Drive
Hauppauge, New York 11788

For Technical Support:
800-992-4762 (USA)
800-833-833-4SMC (Canada)
For Literature:
800-SMC-4YOU (USA)
800-833-4SMC (Canada)

Introduction

Ethernet Adapter Overview

This manual contains information for the following Ethernet adapter boards:

- Elite16 (8013 EPC)
- Elite16T (8013 WC)
- Elite16 Combo (8013 EWC)

These Ethernet adapter boards are designed for IBM PC, XT, AT, non-Micro Channel PS/2, and compatible computers. These products connect to a local area network (LAN) using either standard Ethernet cable or 10BaseT unshielded twisted-pair wire and telephone-type modular plugs.

In a network, the Ethernet adapter will interoperate with most network adapters that comply with the IEEE 802.3 10Base2, 10Base5, or 10BaseT Ethernet standards.

In addition to this manual, the Ethernet adapters come with a software driver diskette. The diskette contains drivers for most major network environments including Novell's NetWare, LAN Manager, NetBIOS, and others. Refer to the **readme.doc** file on the diskette, for a complete listing of the drivers, and for information on installing the software driver programs. Refer to the "LAN Software Installation" section in this guide for NetWare and LAN Manager adapter installation information.

The software driver diskette also contains a setup program for configuring the adapter (if the preassigned jumper settings cannot be used because of conflicts with other boards installed in your computer).

The "Network Interconnections" and "Appendices" sections of this manual contain information that is unique to the individual adapters. The information in all the other sections pertain to all three Ethernet adapters unless otherwise specified.

Ethernet Adapter Features

Elite16 (See Figure 1)

- A single adapter provides thick and thin Ethernet cable connections.
- One jumper selects the most popular configurations.
- Software setup program also available for simple installation and configuration.

Elite16T (See Figure 2)

- Provides an Ethernet UTP cable connector and a standard AUI coaxial cable connector.
- Automatically determines which network connection is being used.
- One jumper selects the most popular configurations.
- Software setup program also available for simple installation and configuration.
- Multiple LED indicators for network troubleshooting.
- Automatic signal polarity detection and correction on UTP port.

Elite16 Combo (See Figure 3)

- A single adapter provides all Ethernet cable connections: UTP, thin and thick coaxial cable networks.
- Automatically determines when the UTP connection is being used.
- One jumper selects the most popular configurations.
- Software setup program also available for simple installation and configuration.
- Multiple LED indicators for network troubleshooting.
- Automatic signal polarity detection and correction on UTP port.

LED Indicators

Transmit LED: Lights when the adapter submits a packet to the network.

Receive LED: Lights when traffic is detected on the network.

Polarity and Link Integrity LEDs: Lights are used for twisted pair connections. (On the Elite16T and Elite16 Combo only.)

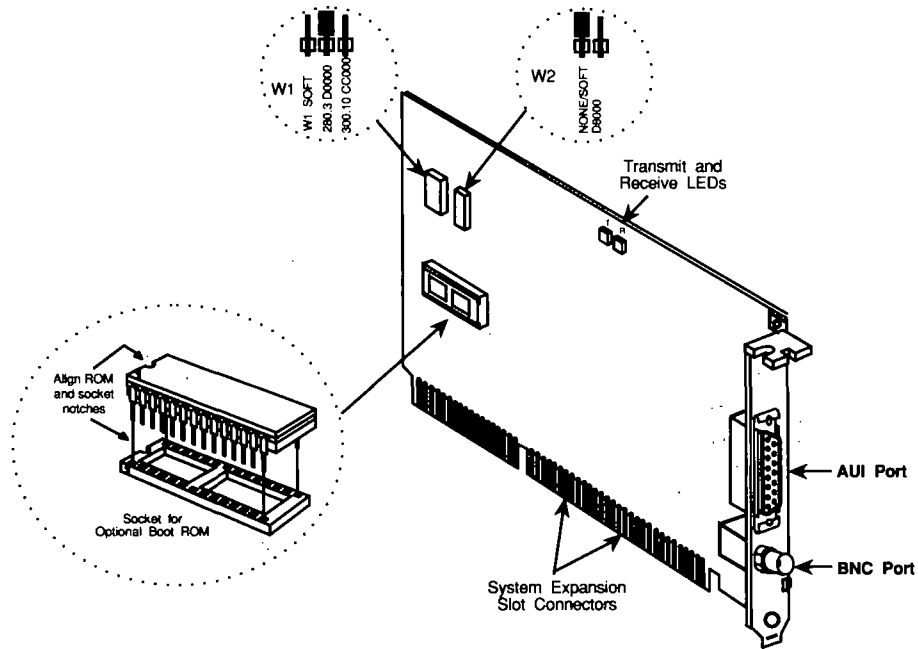


Figure 1. Ethernet Elite16 Adapter

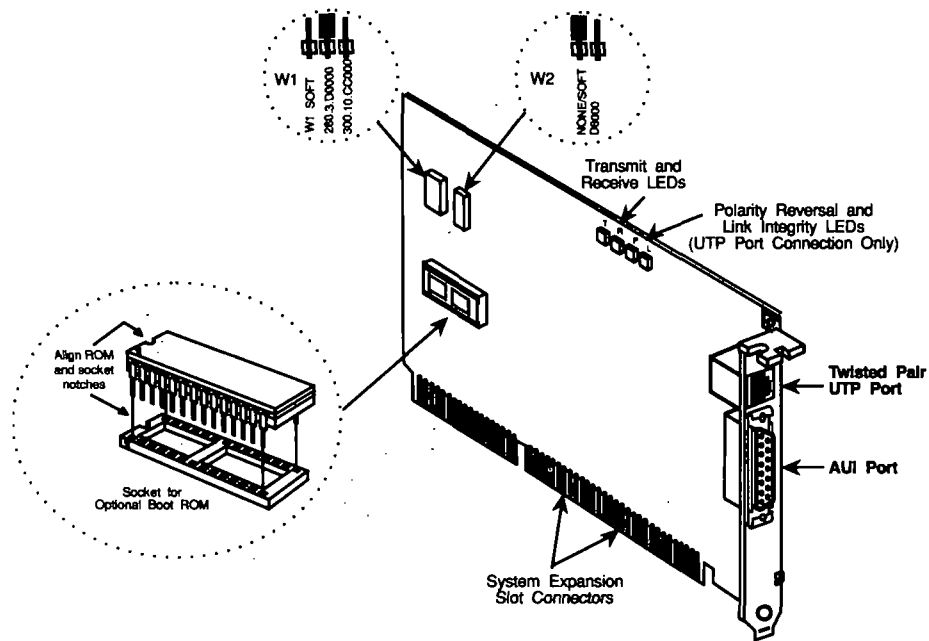


Figure 2. Ethernet Elite16T Adapter

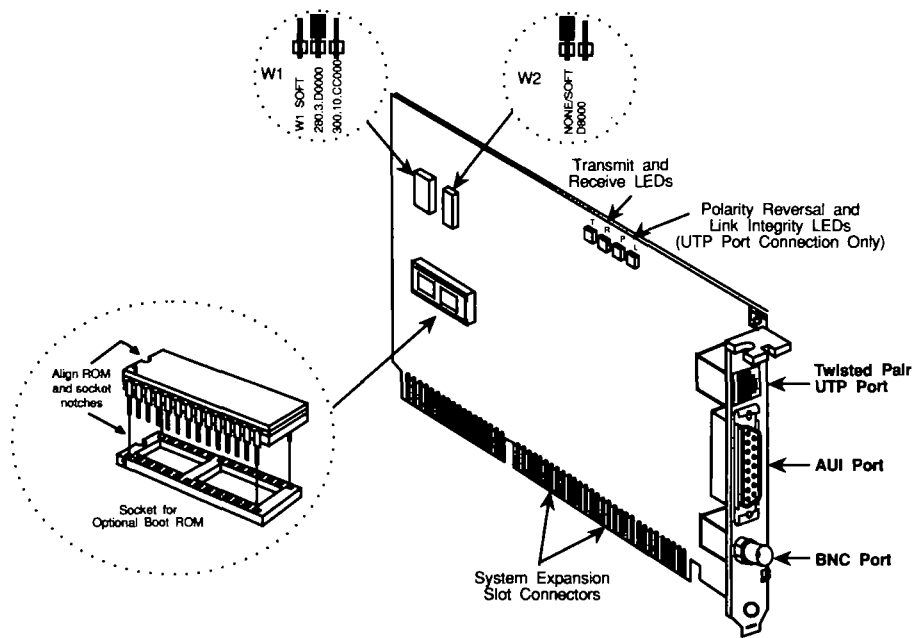


Figure 3. Ethernet Elite16 Combo Adapter

Quick Installation

Adapter Installation

This section is designed for those users who are experienced in the installation and configuration of LAN adapters. If you require more detailed guidance or information, refer to the "Configuration and Installation" section of this manual.

The adapters can be installed in any available 8-bit or 16-bit computer expansion slot. 16-bit memory access will provide the best performance.

Before beginning installation check the adapter's default I/O base address, IRQ level and RAM base address to make sure that they don't conflict with another option board that can not be changed.

1. Set the configuration jumper. The jumper at W1 will set the adapter's I/O base address, IRQ

level, and on-board shared memory base address (RAM).

If you can use the default values – I/O Register range 280 - 29F, IRQ 3, and shared RAM D0000 - D3FFF – then there is no need to change the jumper setting at W1.

2. Set the ROM jumper (W2) and install the Boot ROM if you are using one. The jumper should be set to NONE/SOFT if you are not using a ROM device.

Refer to "Configuration and Installation" for more information on steps 1 - 2.

For more information on installing the Boot ROM, refer to "Installing the Boot ROM."

3. Install the adapter board in the computer.

4. Connect the cables.

For more information on cable connection, refer to "Network Interconnection."

5. Check the adapter and cable installation by running the diagnostic program "Diagnose" on the software diskette.

For more information on running the Diagnose program, refer to the section entitled "Diagnose."

6. Install the network software. This involves loading one or more network programs onto both the server to be addressed and a specific workstation.

Several network programs are discussed in the chapter entitled "LAN Software Installation": NetWare 286 v2.2 and later, NetWare 386 v3.11 and later, and LAN Manager V2.0.

If an optional ROM was installed on the adapter, you may need to prepare the network software for ROM operation.

Once these steps are completed, you can reboot your computer and access the network through your Elite 16 card.

Configuration and Installation

Steps For Installing/ Configuring the Adapter

This section lists the steps for installing and configuring your adapter, and tells where to find specific information. It is important that you perform the steps in the order indicated.

1. Read the section, "Avoiding Configuration Conflicts." Although, for most installations, the default factory settings for the Ethernet adapter will not create configuration conflicts, it is important that you be aware of the settings commonly used by other devices and computer functions.
2. Configure the adapter. Refer to the section, "Configuring the Adapter."
3. If you want to install an optional ROM device (to connect a diskless PC to a network, for example),

refer to the section "Installing a Boot ROM."

4. Install the adapter in your computer. Refer to the section, "Adapter Installation."
5. Connect the adapter to thin Ethernet, standard (thick) Ethernet or unshielded twisted pair cable. Refer to the section, "Network Interconnection."
6. Configure the software driver. Refer to the section, "Software Installation."
7. Load the network software package. Refer to the section, "Loading the Network Software."

Avoiding Configuration Conflicts

In most cases the adapter's preconfigured jumper settings for I/O base address, RAM base address, and IRQ level will not conflict with other devices or functions in your computer. To verify that the preconfigured jumper settings are satisfactory for your installation, it is important that you be acquainted with the configuration settings typically used by other devices and computer functions. This will also enable you to change the settings if they are not satisfactory for your installation.

This section provides information on configurations used by other devices and computer functions. Read the information, then use the System Configuration Chart in Appendix C to record the configurations of devices and computer functions in your computer. Refer to this chart when select-

ing configuration options for the Ethernet adapter. (The first row lists the Ethernet adapter's preconfigured settings.)

Input/Output (I/O) Base Address

The Ethernet adapter requires 32 contiguous I/O addresses (20 hex). The I/O base address is used to assign the location of this address space.

Table 1 lists all possible I/O base addresses for your Ethernet adapter in column 1. Notice that the range is 200 – 3E0 (hex). Column 2 lists potential conflicting devices and their typical I/O addresses. Use this table as a guide when selecting an I/O base address for your adapter. If, for example, you have a Wyse 2108 PC (which typically uses I/O base address

280), select an I/O base address other than 280. Make sure that the address you select is not used by some other device.

All addresses without a description in Column 2 are generally available for use. Be aware, though, that computers with small built-in LED or LCD displays (to show disk cylinder data or clock speed) may also use these address spaces.

RAM Base Address

Refer to Table 2 when selecting a RAM base address. Table 2 shows the RAM address spaces generally used by other devices and computer functions (shaded area). It is important that you select a RAM base address that is not being used.

Possible I/O Base Addresses	Potential Conflicting Devices And Their Typical I/O Addresses
200	Game Controller/Joystick (200 - 20F)
	Expansion Unit (210 - 217)
220	
240	
260	LPT2: (278 - 27F)
280*	LCD display on Wyse 2108 PC
2A0	
2C0	
2E0	COM4: (2E8 - 2EF) GPIB-Adapter 0 (2E1)
	COM2: (2F8 - 2FF) Data Acquisition (2E2 - 2E3)
300	Prototype Card (300 - 31F)
	3Com EtherLink factory setting (300 - 31F)

Possible I/O Base Addresses	Potential Conflicting Devices And Their Typical I/O Addresses
320	XT Hard Disk Interface (320 - 32F)
340	
360	LPT1: (378 - 37F)
380	SLDC/Secondary BI-Sync Interface (380 - 38C)
3A0	Primary BI-Sync Interface (3A0 - 3A9)
	Monochrome Display (3B0 - 3BB)
3C0	EGA Display Control (3C0 - 3CF)
	Color/Graphics Display-CGA (3D0 - 3DF)
3E0	COM3: (3E8 - 3EF)
	Floppy Disk Controller (3F0 - 3F7)
	COM1: (3F8 - 3FF)

*Factory default for Ethernet adapter.

Table 1. Input/Output (I/O) Addresses of Common Devices

	A0000	B0000	C0000	D0000	E0000	F0000	100,000	
MONO								(B0000 - B1000)
CGA								(B8000 - C0000)
EGA								(A0000 - C0000)
VGA								(A0000 - C8000)
EXP. MEM.								(D0000 - E0000)
XT BIOS								(F4000 - 100000)
AT BIOS (IBM)								(E0000 - 100000)
AT BIOS (IBM CLONE)								(F0000 - 100000)

Table 2. RAM Used by Various Devices

Memory Management Utility Conflicts

If you are using memory management utilities (for example, QEMM or 386-Max), it is important that you know how to exclude the Ethernet adapter's RAM address space from your memory management driver. This is necessary because many memory utilities use the area in memory normally used by the Ethernet adapter. The task of excluding the Ethernet adapter's RAM base address space from your memory management driver is usually accomplished by a command line option in the CONFIG.SYS file.

A similar situation exists with programs such as Windows in 386 mode, which maps memory between 640 Kbytes and 1 Mbyte. Again, the

best solution is to exclude the Ethernet adapter's RAM address space from the memory management driver.

IRQ Level

A unique interrupt (IRQ) level must be assigned to the Ethernet adapter. The configuration options are IRQ 2, 3, 4, 5, 7, 10, 11, and 15.

Some of these options are listed in column 1 of Table 3. Columns 2 and 3 show the devices and computer functions in an XT computer and in an AT computer, respectively, that are likely to use the IRQ levels shown in column 1. For example, the hard disk inside an XT is likely to use IRQ 5; whereas the LPT2 port in an AT is likely to use IRQ 5. Therefore, to avoid a conflict, you should *not* configure the Ethernet adapter to use IRQ 5 if you

have a hard disk installed in your XT computer, or if the LPT2 port is being used in your AT computer.

The same principle applies to the other IRQ levels shown in Table 3. Note that some IRQ levels may be usable for your LAN adapter even though the chart indicates a conflict.

IRQ	XT	AT
2	EGA/VGA	EGA/VGA
3	COM2	COM2
4	COM1	COM1
5	HARD DISK	LPT2
7	LPT1	LPT1
10	N/A	UNUSED
11	N/A	UNUSED
15	N/A	UNUSED

**Table 3. IRQ Levels of Common
Devices**

For example, even though EGA and VGA video adapters are installed and potentially can use IRQ 2, most applications do not; hence, IRQ 2 may be available for use with the Ethernet adapter. Likewise, even though you have a printer installed at LPT1, using IRQ 7 may not create a problem. This is because most applications do not use LPT1 with interrupts.

The Ethernet adapter has been designed for maximum configuration flexibility using a minimum number of jumpers. This is achieved primarily through the use of the W1 jumper block.

W1 jumper block allows you to choose among three options: two preassigned hardware configuration settings and one setting which enables you to select any valid configuration via the software setup program that comes with the adapter. The setup program provides a variety of additional configuration settings from which to choose.

Note: The factory-configured I/O base address associated with the soft jumper setting is 240, and both the RAM base address and the IRQ settings are disabled to avoid conflicts.

In addition to jumper block W1, there is a W2 jumper block. W2 enables you to select memory space for an optional ROM device. See Figures 1, 2, and 3 in the Introduction.

W1:

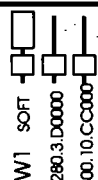
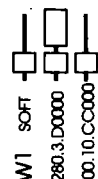

The W1 jumper block sets the adapter's I/O base address, IRQ level, and on-board shared memory base address (RAM). Table 4 shows the settings associated with the three possible jumper configurations.

If the factory default setting (I/O base address 280, IRQ 3, RAM base address D0000–D3FFF) conflicts with the configuration of another board or computer function, use the other jumper setting (I/O base address 300–31F, IRQ 10, RAM base address CC000). Most configuration conflicts

can be avoided using one of these two choices.

If, however, both hardware settings result in a conflict between the Ethernet adapter and another option board or computer function, you must change the configuration of the other board or computer function, or set the Ethernet adapter jumper (W1) to SOFT and run the software setup program.

If neither of the two preconfigured settings is satisfactory (or if you are installing more than two adapters in the same computer), set the jumper to SOFT and run the software setup program to configure the adapter. This will enable you to choose from a variety of different configurations. (Refer to the "Software Configuration" section).

Configuration Settings	W1
The soft jumper setting is used to configure the adapter using the setup program. (IO Base Address = 240)	
I/O Base Address = 280 IRQ = 3; Enabled RAM Base Address = D0000	
I/O Base Address = 300 IRQ = 10; Enabled RAM Base Address = CC000	

**FACTORY
SETTING**

Table 4. Configuration Parameters - W1

W2:

The W2 jumper block (refer to Table 5 in the "Installing a Boot ROM" section) is used with an optional boot ROM device. The jumper should be set to NONE/SOFT if you are not using a ROM device. The "Installing a Boot ROM" section provides detailed instructions on inserting and configuring an optional boot ROM.

Selection between coaxial and twisted pair network interface is automatic. When connected to a valid twisted pair link, the adapter will switch into twisted pair interface mode (indicated by "link" LED on). When no valid twisted pair link is found (indicated by "link" LED off) the adapter will switch into coaxial mode.

After you have configured the adapter and (if desired) installed an optional boot ROM device, you are ready to install the adapter in your computer.

Software Configuration Using Setup

Configuring the Adapter Using the Setup Program

Introduction

The adapter comes configured from the factory to use I/O registers in the range 280 – 29F (hex), IRQ 3, and shared RAM at D0000 – D3FFF (hex). If the factory default configuration conflicts with the configuration of another board or computer function, consider changing the jumper at W1. Refer to Table 4.

If the values associated with the other preassigned jumper setting also conflict, set the jumper at W1 to SOFT and run the software setup program to select a configuration.

This section explains how to use the *software setup program*. In addition to the settings associated with SOFT at W1, the setup program can be used to change the ROM base address

(that is, the setting associated with SOFT at W2), and other configuration parameters. See Table 6.

Before running the software setup program, make sure that –

- You have installed the adapter in your computer. Refer to the section in your computer's user documentation that describes how to install option boards.

Note: Always handle the adapter by its edges.

- Network software is not running on the computer. If network software is running on the computer, remove the network software from your CONFIG.SYS or AUTOEXEC. BAT files, if necessary. Then, reboot the computer (or otherwise unload the network

software) to ensure proper functioning of the configuration software.

- If more than one LAN adapter is to be installed, make sure you know the identification of the adapter you want to configure. If a single adapter is to be installed, the setup program will automatically find it. If there is more than one adapter, you must tell the setup program which adapter to configure. Each Ethernet adapter can be identified by its 12-character node address (located on the NETWORK ADDRESS label attached to the adapter), or by its I/O base address.

Software Configuration Procedure

Software changes can be made without the W1 jumper block being configured for SOFT. However, values you entered using the setup program (I/O base address, IRQ, and RAM base address) will not take effect until you set W1 to SOFT. Similarly, in order for the ROM base address to be configured with the value you enter, the W2 jumper block must be set to NONE/SOFT after the changes have been made.

If necessary, you can use the configuration software in one computer to configure an adapter that will be installed in a second computer, such as a "diskless" workstation. If you do this, make sure that the adapter's I/O base address does not conflict with

any other option board installed in the computer used for configuration.

Once you have installed the Ethernet adapter in your computer, and you are sure that network software is not running on the computer, you are ready to configure the adapter using the setup program. Use either the interactive method to configure the adapter (where the program prompts you), or use a command line.

After installing the Ethernet adapter, use the software setup program to configure the adapter only if:

- Neither of the two preconfigured W1 jumper settings is suitable because of conflicts with other devices.

– OR –

- You are installing more than two adapters in the same computer, thus requiring more than two configurations.

– OR –

- You wish to configure twisted pair to disable link integrity.

Interactive Method

If you want the setup program to prompt you, perform the following steps:

1. Place your software driver diskette in a floppy drive, and change to the drive containing the diskette.
2. Type the following:

ezsetup [ENTER]

3. Follow the instructions displayed on the screen.

Command Line Method

If you are familiar with EZSETUP and want to skip the interactive prompts, you may use a command line to change the values associated with the soft setting. The command line consists of three components: the

command, **ezsetup**, the adapter identification (required only when more than one adapter is installed), and the configuration parameters. The adapter identification can be either the I/O base address or the node address. The command for identifying the adapter using the node address is `/node:x`, where x is the adapter's 12-digit node address.

Table 5 provides two examples of properly constructed command lines; and Table 6 provides a detailed description of each option.

Notice that for each example in Table 5, the command **ezsetup** starts the setup program, the adapter identification, if specified, tells the system which adapter is to be configured, and the remaining information tells the system how to configure the adapter.

In example 1, the IRQ level is changed to 5 and the RAM base address is changed to C8000. Notice in example 1 that the adapter identification is omitted. This is valid when there is only one adapter installed in your computer.

Example No.	Command Lines
Example 1	<code>ezsetup /irq:5 /ram:C8000</code>
Example 2	<code>ezsetup /io:240 /newio:280 /irq:5 /ram:C0000 /rom:D0000</code>

Table 5. Command Line Examples

In example 2, the I/O base address is changed to 280, the IRQ level is changed to 5, the RAM base address is changed to C0000, and the ROM base address is changed to D0000. If you omit a configuration parameter from the command line, the program uses the default (refer to Table 6). To obtain a list of all the commands you can use, type: `/?`

Note: Any combination of upper and lower case letters is valid.

Command	Description
/?	Displays all setup program commands.
/default	Forces the adapter to the following settings when the jumper is set to SOFT: I/O address 240, IRQ 2, RAM base address CC000. This command produces the same result as /factory, except that IRQ is enabled.
/factory	Forces the adapter to the default, factory-set values for the SOFT jumper position (I/O address 240, IRQ 2 (disabled), RAM base address CC000).
/io:x	Identifies the current I/O base address of the adapter you want to configure. The factory setting for the I/O base address at the SOFT jumper location is 240.
/irq:x	Specifies the interrupt level (IRQ). Possible values for x are 2, 3, 4, 5, 7, 10, 11, or 15. This command enables the IRQ specified.
/link_int:x	Specifies whether link integrity is enabled or disabled where x is either e (enabled) or d (disabled). This command is available for EW and W adapter models only. For the EPC, WC, and EWC cards, use the /netconn command instead.
/netconn:x	Specifies which kind of network connection you want. Possible values for x are: 1 = BNC/10BaseT; 2 = AUI/10BaseT; or 3 = TP (no link integrity). Use this command with the EPC, WC, and EWC series cards.
/newio:x	Specifies a new I/O base address. Acceptable values for x are 200, 220, 240, 260, 280, 2A0, 2C0, 2E0, 300, 320, 340, 360, 380, 3A0, 3C0, and 3E0 (hex).
/node:x	Identifies the node address of the adapter you want to configure. x is the 12-digit node address printed on the NETWORK ADDRESS label attached to the adapter. This command is an alternative to using the /io command to identify the adapter.
/ram:x	Specifies the RAM base address. The parameter x can be any 16-Kbyte boundary between 80000 and FFC000. Example: A0000. For RAM base address above 1 MByte, 6 digits (choices) have to be specified. Example: 8C0000.
/rom:x	Specifies the base address of the boot ROM. Possible values for x are any address between 80000 and FC000. Note: The address must be on a boundary of the ROM size.
/romsize:x	Specifies the size of the ROM window in Kbytes. Possible values for x are 0 (ROM disabled), 16, 32, and 64.

Table 6. Configuration Options

Diagnostics

Diagnostic Overview

The diagnostic program provided on the software diskette is used to verify the correct configuration and operation of a LAN adapter board before installing the network software.

Before Installing the Program

1. Ethernet boards must be on a properly terminated cable. Use a BNC "T" connector with two 50 Ohm terminators, an AUI loopback connector, or connect to a properly functioning 10BaseT concentrator.
2. Boot the PC to a DOS prompt.

Network memory resident (TSR) programs and device drivers should not be loaded while the diagnostic program is active, so you may need to temporarily rename your CONFIG.SYS and

AUTOEXEC.BAT files. Network software must not be loaded when running the diagnostic program.

Screen Prompts

The following screen options are used throughout the entire diagnostic program menu system.

Enter=Select: Press [Enter] to select the highlighted option.

ESC=Cancel: Press [ESC] to back up to the previous screen. At the Main Menu, press [ESC] to exit the diagnostic program.

F1=Help: Displays additional information about any item on the menu. To return to the menu options press [ESC].

Arrow Keys: Use ↑, ↓, →, and ← to move the cursor to the desired location. In addition, several other function keys are used with specific menus. These keys are described later in this section.

Starting Diagnostics

1. To run the diagnostic program, change to the directory with the diagnostic program - DIAGNOSE on the software diskette.

2. Type: DIAGNOSE then press [Enter]

The Introduction Screen appears.

3. Press [Enter] to access the Entry Menu.
4. Press [Enter] again.

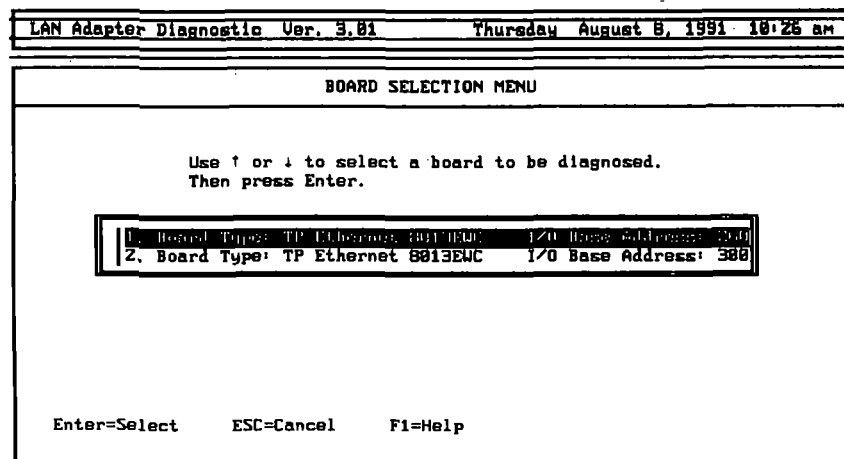


Figure 4. Board Selection Menu

The "Choose a Board to Diagnose" option will be highlighted.

5. Press [Enter] to select this option.

The Board Selection Menu appears as shown in Figure 4. A list of available adapters is displayed for your selection.

If an error message appears, this indicates that either an adapter board is not present in the PC or is not responding properly. If two adapter boards are installed in the same machine, each board should be listed in the Board Selection menu and must have a unique interrupt and I/O address assigned to it.

If only one board is displayed, and you're certain there is more than

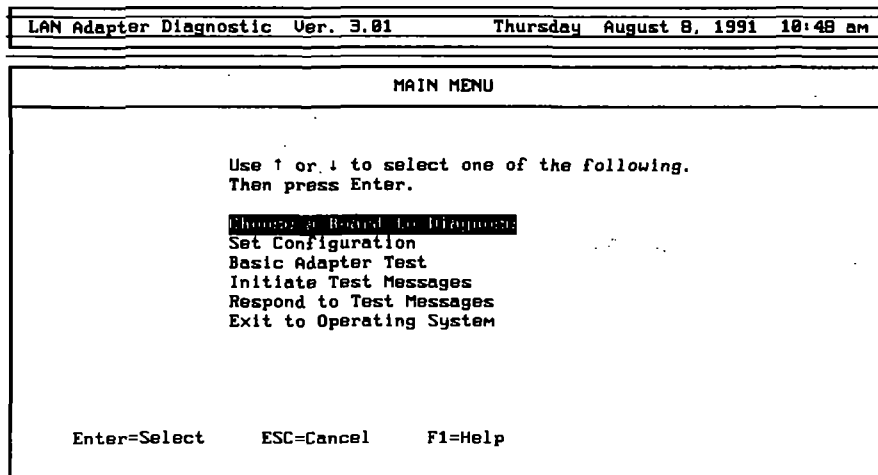


Figure 5. Main Menu

one adapter board in the PC, then the same I/O address may have been assigned to both boards. To fix this, turn off the PC and check the I/O address on all boards. Change the I/O addresses so that each board has a unique value. Restart the PC and rerun the diagnostic program.

6. Use the arrow keys to highlight the board you want to diagnose and press [Enter], or simply type the list number to the left of the board (for instance, 1) to select that board.

The current board parameters appear. These items will be described later. Press [Enter] to access the Main Menu (Figure 5). If your adapter is configured with different parameters, the option

Main Menu

to correct these parameters can be accessed from this menu.

Main Menu Options:

Several options appear in the Main Menu. Each is described briefly below.

Choose a Board to Diagnose:

Select this option to choose a new adapter to be diagnosed. The previous section described how this is done.

Set Configuration:

Select this option to display the configuration information read from the board and perform temporary configuration changes. The permanent adapter settings are not affected. See page 37 for details.

Basic Adapter Test:

Select this option to run a diagnostic

test on the selected adapter. See page 39 for details.

Initiate Test Messages:

Select this option to send messages to another node running DIAGNOSE in Responder mode. See page 40 for details.

Respond to Test Messages:

Upon selecting this option, the program waits for a Test Message to be received from another node on the same network using DIAGNOSE and running "Initiate Test Messages." All received Test Messages are echoed back to the Initiator. See page 40 for details.

Exit to Operating System:

Select this option to exit the diagnostic program and return to DOS.

Set Configuration

Set Configuration Menu:

When you select the "Set Configuration" option, a screen like Figure 6 appears. The node address for the selected adapter appears at the top along with its adapter type as determined by the program. Below this appears a list of parameters and their current values. Use this option to change any of these parameters:

- Base I/O Address
- IRQ Interrupt
- RAM Size
- RAM Base Address
- ROM Size
- ROM Base Address
- Network Connection

To change one of the displayed parameters, use the arrow keys to high-

LAN Adapter Diagnostic Ver. 3.01		Thursday August 8, 1991 10:10 AM	
SET CONFIGURATION MENU			
Board Type: 8013EWC		LAN Type: TP Ethernet	
Network Address: 00 00 C0 A5 C1 2B			
Use ↑ or ↓ to select one of the following. Press Enter, and select the value for that parameter.			
Base I/O Address	2000		
IRQ Interrupt	5		
RAM Size	16K		
RAM Base Address	D4000		
ROM Size	Disabled		
ROM Base Address	C0000		
Network Connection	10BaseT or AUI		
Enter=Options ESC=Cancel F1=Help F10=Configuration Complete			

Figure 6. Set Configuration Menu

light that parameter and press [Enter]. A list of optional settings appears. Use the arrow keys to highlight the setting you require and press [Enter]. The new setting is now displayed.

Notes:

1. The RAM Address you select here is only for the purpose of this program and has no effect on any other network software used afterward.
2. The program will not stop a user from making an invalid selection.

Some of the choices presented may conflict with other installed devices. Please refer to the "Configuration Conflicts" section to make sure that the

Basic Adapter Test

choices you select do not cause a conflict. If there is a conflict, cycle power.

When you're finished, press [F10] to save the changes you've made, or press [ESC] to exit without change.

The Basic Adapter Test is used to verify that the major functions of the adapter operate properly.

If any of the tests fail, the program notifies you of the error and suggests actions to take to solve the problem.

Tests are performed on the following:

- I/O Port Accessibility
- LAN Address ROM
- On-board RAM
- Network Controller Registers
- On-Board ROM (if installed)
- Internal Loopback
- Interrupt Generation

The test has failed if:

1. An error message displays at the bottom of the screen in a red box.

2. The test hangs up at a certain blinking line and never completes. The blinking line is the test that failed.

If either of these two conditions occur: Read the error message or blinking line and write it down. Cycle power. Use the error message or blinking line to find the problem. Common problems include:

- Not terminating an Ethernet network
- Hardware or software conflicts with IRQ, Base I/O, or RAM Address.

If the board fails, recheck the board settings, try a different BNC "T" connector and terminator, or remove other boards from the PC.

Initiate/Respond to Test Messages

The "Initiate Test Messages" and "Respond to Test Messages" options are used to verify that the network cabling is properly set up to transmit and receive information.

The Responder echoes the messages back and the Initiator makes sure it receives the same messages it transmitted. In order to run this test, another node on the same network must be using DIAGNOSE and have "Respond To Test Messages" running.

The best test environment is two PC's directly cabled, but this test can be run with any PC using an SMC Ethernet card on the network.

To run the initiate/respond test, follow this procedure:

1. At the chosen PC on the network, select the "Respond to Test Messages" option from the Main Menu. Press [Enter]. A prompt appears on the screen: "Waiting to Respond to Test Messages. Press any key to stop."

This PC is now ready to respond to test messages and is called the Responder.

2. At a different PC, select "Initiate Test Messages" from the Main Menu.

Press [F2] and all active Responders are displayed with their network addresses. Select the Responder you want to test by using the arrow keys.

3. Press [Enter] to begin the test.

The test will perform 1000 iterations after finding the first available Responder if a Responder has not been previously selected.

If the error message "No Responder Found" displays, then the two computers cannot communicate across the network. A common reason for this failure is faulty cabling, "T" connectors, or terminators that are bad. See the "Troubleshooting" section in this manual for other suggestions.

When the test is complete, press [F4] at either computer to see the test results as shown in Figure 7. This screen provides you with statistics on both the Initiator and Responder terminals. You can tell whether the In-

itiator and Responder passed by referring to this screen.

The Show Statistics screen also provides a number of function key operations:

- To update data without clearing the counter setting, press [F4]. This automatically updates data as the test continues. To clear these statistics, press [F6].
- To exit this test and return to the Respond menu, press [Esc].
- To change the test parameters, such as number of iterations or the test pattern, press [F6] at either the Initiate or Respond menu. A screen with a list of all test parameters appears. For most of these parameters, use your arrow

LAN Adapter Diagnostic Ver. 3.01		Thursday August 8, 1991 10:24 am	
TRANSMIT STATISTICS		RECEIVE STATISTICS	
Frames Sent	0	Frames Received	0
Broadcast Sent	0	Broadcast Received	0
Multicast Sent	0	Multicast Received	0
Collisions	0	CRC Errors	0
Tx Aborts	0	Alignment Errors	0
Lost CRS	0	Rx Overruns	0
Tx Underruns	0	Missed Frames	0
No CD Heartbeat	0	Rcvr Disabled	0
OWC - Collisions	0	Deferring	0
Tx Overlapped	0	Runt Packets	0
Xmt Retries	0	Bad Next Packet Ptr	0
		Miscompare/Checksum	0
		Link integrity signal present	
		Link polarity correct	
ESC=Cancel F1=Help		F4=Update Stats	F6=Clear Stats

Figure 7. Show Statistics Screen

Exit to Operating System

keys to highlight the parameter you want to change, then use the [Spacebar] to change the setting. Each time you depress the [Spacebar], the value will change.

- To change either the test pattern and destination address field, type in the value you require. When you're finished, press [Esc] to return to the Respond Menu.
- For a definition of each parameter used during this procedure, press [F1] at the appropriate screen and a list of relevant definitions appear.

Select the Exit option when all diagnostic procedures have been completed and you want to return to DOS.

For more information on how to operate the diagnostic program, refer to the **user.doc** file located on the software diskette.

LAN Software Installation

Driver Installation

The software diskette that comes with the adapter contains drivers for most major network environments, including Novell's NetWare, Microsoft's LAN Manager, IBM's LAN Server, and others. Many of the drivers, including NetWare and LAN Manager, simplify the installation process by automatically finding the Ethernet adapter. To install NetWare 286 V2.1, for example, all you need to do is create an IPX file and copy it and the NET3, NET4, or NET5 files onto your system..

For other drivers, you may need to modify the I/O base address, IRQ level, and RAM base address, so that the settings of the driver match the settings of your adapter. Refer to the **install.doc** file contained in the driver's directory for detailed instructions.

To load network operating system software other than NetWare and LAN Manager onto the computer, refer to the instructions provided with your network software package. If an optional ROM was installed on the adapter, you may need to prepare the network software for ROM operation. Refer to the instructions provided with the ROM device and your network software.

This section provides instructions for loading the following network operating system software:

- NetWare 286 V2.2
- NetWare 386 V3.1
- LAN Manager V2.0

If you are using other types of drivers, please refer to the **install.doc** file and relevant driver manuals.

The following sections describe the steps required to load and configure the NetWare shells for both NetWare 286 and NetWare 386 versions.

In all cases, there are two basic operations you must complete in order to install the NetWare shell.

1. Load the NetWare program on your workstation.
2. Load the NetWare program on your server.

In addition, if you are using DOS ODI, you must load the NetWare program onto the relevant workstation. Both NetWare 286 and 386 treat this installation the same way. A brief explanation of how to load and configure LAN Manager 2.0 concludes this chapter.

Loading NetWare 286 V2.2

Note: These instructions are not intended to be comprehensive for all configurations, but will work in the majority of the cases.

The procedures in this section are for NetWare 286 V2.2 and later. This version of NetWare 286 is considerably easier to load and configure than v2.1.

To Generate a Network Server for NetWare 286 V2.2:

1. Make backup copies of the NetWare SYSTEM -1 and SMC SuperDisk diskettes and store the originals.
2. Insert the copy of the SYSTEM -1 floppy into the server's drive A:.
3. Access drive A: .
4. Type: INSTALL and press [Enter]

A screen like Figure 8 appears.

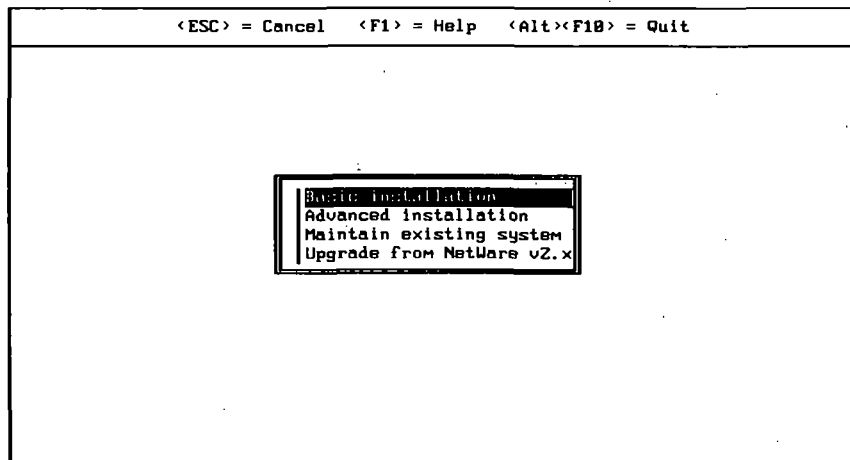


Figure 8. Workstation Options Menu

5. Select the "Advanced Installation" option.

A message screen appears.

6. Press [Enter].

A screen like Figure 9 appears.

7. Select either the "Dedicated" or "Non-dedicated" option.

If you have designated this server for exclusive NetWare use, then specify "Dedicated". All hard disk partitions in the server are assigned to NetWare use.

If you have partitioned this server's hard disk for use with more than one platform, specify "Non-dedicated". You are prompted to designate which hard disk partitions will be used by the NetWare program.

<ESC> = Cancel <F1> = Help <Alt><F10> = Quit

Operating System Generation

Operating system mode: **Dedicated**
Nondedicated network address:
Number of communication buffers: 150
Will this machine be the server? No
Include core printing services? Yes

Network board A
Driver: (Press <Enter> to see list)
Configuration Option:
Network address:
Network board B

To scroll the screen, use the arrow keys. Modify highlighted field with <Enter> or <Delete>. When all the information is correct, save and continue with <F10>.

Figure 9. Workstation System Configuration

8. Highlight the "Network Board A" option and press [Enter].

A list of all available network boards appears.

9. Press [Insert].

10. Insert the SuperDisk diskette into drive A: and press [Enter].

The appropriate LAN drivers are installed and the new SMC option appears highlighted in the list as shown in Figure 10.

A list of acceptable adapter settings appears like the one in Figure 11.

<ESC> = Cancel <F1> = Help <Alt><F10> = Quit

Operating System Generation

Number of communication buffers: 150
Will this machine be the server? No
Include core printing services? Yes

Mndiosv kelidsl othdlkdis keis w/AT 1 v.X.XXEC (XXXXXX)
Mndiosv kelidsl othdlidisd keis w/AT 2 v.X.XXEC (XXXXXX)
Qdestsm Nodkela ajoekslkdlsls xodle w/AT 1 v.X.XXX (XXXXX)
Rsdidsu dislelg lsldlsckd lueuadjcna w/AT 2 v.X.XXXX (XXXXX)
SMC EtherCard PLUS w/AT 1 v.X.XXEC (XXXXXX)

Driver: (Press <Enter> to see list)

Highlight your choice; then press <Enter>.

Figure 10. Workstation System Configuration 2

<ESC> = Cancel <F1> = Help <Alt><F10> = Quit

Operating System Generation

Nondedicated network address:
 Number of communication buffers: 150
 Will this machine be the server? No

0: First Software Configured Adapter
 1: Second Software Configured Adapter
 2: Third Software Configured Adapter
 3: Fourth Software Configured Adapter
 4: IRQ=3, I/O Base=280h, RAM at D000:0 for 16k
 5: IRQ=5, I/O Base=300h, RAM at C000:0 for 8k
 6: IRQ=10, I/O Base=2A0h, RAM at CC00:0 for 16k
 7: IRQ=2, I/O Base=240h, RAM at D800:0 for 32k
 8: First Micro Channel Adapter
 9: Second Micro Channel Adapter
 10: Third Micro Channel Adapter
 11: Fourth Micro Channel Adapter
 12: Driver Configurable by Jumpers Utility

Figure 11. Adapter Settings Options

12. Select the option corresponding to the settings of the network adapter board.

Option 0, first software configured adapter, is recommended.

You are prompted to provide a network address for the selected board.

13. Type in a unique network address.

For more information on installing this network address, refer to "Network Address" in the Novell Concepts manual.

14. If you have another adapter board installed in the server, continue to the "Network Board B" option and repeat steps 9 through 13 to define settings and driver specifications.

Continue to define each network board in your server, until all boards are defined.

15. When you're finished, press [F10].
16. Cursor down the "Operating System Generation" screen until you get to the channel option selections.

A list of channel options appears immediately below the Network Board selections.

17. Assign hard disk space for each channel designated.

Follow all prompts and refer to the Novell User's Manual for instructions on defining channels.

To Generate a Workstation for NetWare 286 V2.2:

1. Make backup copies of the NetWare LAN_DRV_200 and SMC Super-Disk diskettes and store the originals.
2. Insert the copy of the WSGEN floppy into drive A:.
3. Access drive A: .
4. Type: WSGEN
and press [Enter] twice.
A list of available adapter boards appears on the screen.
5. Press [Insert].
6. Insert the SuperDisk diskette into drive A: and press [Enter].

If the file was read successfully, a message appears like this:

**DRIVER FILE FOR SMC
ETHERCARD PLUS VXXX
READ SUCCESSFULLY.**

where xxx is the version number.

7. Press [Enter].

The SMC EtherCard PLUS board is now installed and highlighted as shown in Figure 12.

8. Press [Enter] to select this board.

A configuration screen like Figure 13 is displayed.

9. Select the configuration setting that matches the setting on your board and press [Enter] to confirm your choice.

Option 0, First Software Configured Adapter, is recommended.

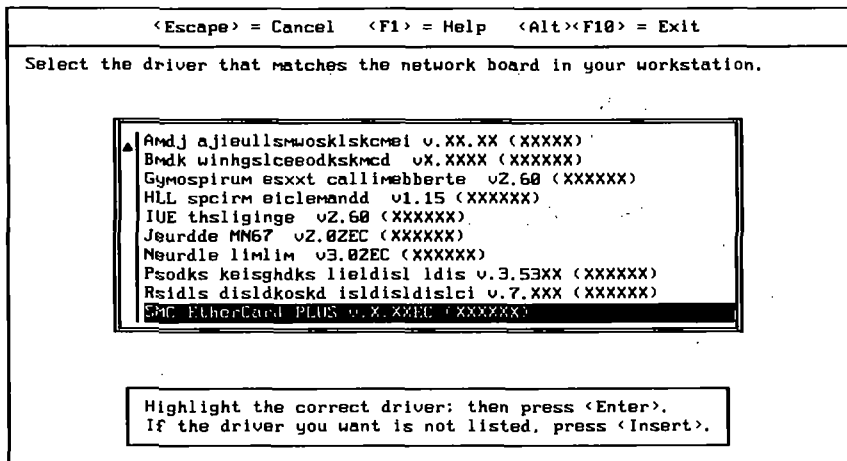


Figure 12. Updated Configuration List

The program displays a screen indicating the choice you've just made and prompts you to reconfirm this choice.

10. Select YES, GENERATE.
11. Insert the WSGEN diskette again when prompted and press [Enter].
12. When prompted, insert the LAN_DRV_200 diskette again and strike any key.

The program creates a NetWare shell for your DOS workstation.

If successful, a message appears stating that the installation is complete. You are returned to the DOS prompt.

Continue the installation by loading NetWare 286 V2.2 on all workstations connected to this network.

Loading DOS ODI Workstation

<Escape> = Cancel <F1> = Help <Alt><F10> = Exit

Select the configuration option that matches the setting on your network board.

Network Board Driver:
SMC EtherCard PLUS v.X.XXEC (XXXXXX)

0: First Software Configured Adapter
1: Second Software Configured Adapter
2: Third Software Configured Adapter
3: Fourth Software Configured Adapter
▼ 4: IRQ=3, I/O Base=280h, RAM at D000:0 for 16k

Highlight the configuration you want, then press <Enter>.

Figure 13. Available Adapter Options Menu

This section tells you how to set up and install a workstation that uses DOS ODI. The procedure for installing this type of workstation is the same whether you are loading NetWare 286 or 386.

To install DOS ODI workstations, do the following:

1. Refer to Novell DOS ODI installation menu.
2. Copy the NET.CFG file to the directory where the ODI driver resides.

Note: There is no need to use the NET.CFG file if the SMC PLUS adapter is an AT adapter configured for the default settings:
Base I/O Address = 280
Interrupt IRQ = 3
RAM Base Address = D000.

If a NET.CFG file already exists on the directory, follow these steps to update that file.

Append the new NET.CFG file to the old one using the DOS COPY command as follows:

```
copy d:\odj\net\cfg+a:net.cfg  
e:\odj\net.cfg
```

This file is used to configure the entire system, not just the driver.

Using NET.CFG

To use and edit the NET.CFG file, you must do the following:

1. There is no need to use or edit the NET.CFG file if the SMC PLUS adapter is an AT adapter configured with the following default settings:

Base I/O Address: 280
Interrupt IRQ: 3
RAM Base Address: D000.

2. If the adapter being used is software-configurable, then only the Base I/O Address must be specified.
3. To change the base I/O address, use the line in NET.CFG which reads
Port #1 280 20
and change 280 to the appropriate Base I/O Address.
4. To change the IRQ, use the line in NET.CFG which reads:
Int #1 3
and change 3 to the appropriate IRQ.
5. To change the RAM Base Address, use the line in NET.CFG which reads
Mem #1 000D0000 2000/10

and change D0000 to the appropriate RAM Base Address. For example:

Mem #1 000C8000 2000/10

will cause the driver to use C8000 as the RAM Base Address.

6. When using NET.CFG with Micro Channel machines, use the PS/2 Slot entry. Find the line which reads:

PS/2 Slot ?

and change the ? to the desired slot number.

Note: The '#' in the first column of the NET.CFG file denotes an ignored line. Remove this symbol from all used lines and insert them into all unused lines, or delete unused lines altogether.

7. To change the protocol name, use the line in NET.CFG which reads:

Protocol name ID
name type

where *name* is the protocol name, *ID* is the protocol ID number, and *name type* is the frame type being used for the protocol.

For example,

Protocol IPX 8137 Ethernet_II

indicates that the protocol name is being changed to IPX - designated protocol ID 8137 - within the Ethernet II frame type.

8. To reassign the link-level frame type, use the line in NET.CFG which reads either:

Frame name

or

Envelope Type name

For example, if you type this line,

Frame ETHERNET_802.2

The frame type is reassigned as Ethernet 802.2. The default frame type is ETHERNET_802.3.

For additional instructions, refer to the *NetWare ODI Shell for DOS manual* and the sections entitled "Install ODI workstations" and "Customize ODI workstation configurations with NET.CFG" in the *NetWare Users Manual*.

To Generate a Server for NetWare 386 V3.11

The procedures in this section are for NetWare 386 V3.11. Installation and configuration for this version of NetWare on the server is much easier, involving a series of easy-to-use prompts which apply for both workstation and server installations.

If you want to install NetWare 386 from diskette, follow these instructions.

1. Make backup copies of both the SYSTEM -1 and SYSTEM -2 diskettes.
2. Insert the SYSTEM -1 diskette into drive A: .
3. Access drive a: .
4. Type: SERVER

5. Type the server name.
6. Type the IPX internal network number
This number is usually the same as the server address.
7. Insert the SYSTEM -2 diskette into drive A: .
8. Type: A:INSTALL
9. Continue through the installation, following the prompts as indicated.

For additional help, refer to the **NetWare 386 User's Manual** and the **386.doc** file.

If you want to install the program from the hard disk, follow these instructions.

1. Copy all files on all the relevant SYSTEM diskettes to the hard disk partitioned for NetWare 386.

Create an appropriate directory for the files before copying.

2. Type: SERVER
3. Type the server name.
4. Type the IPX internal network number
This number is usually the same as the server address.
5. Insert the SYSTEM-2 diskette into drive A: .

6. Type: A:INSTALL
7. Continue through the installation, following the prompts as indicated.

For additional help, refer to the *NetWare 386 User's Manual* and the **install.doc** file on the SMC Super-Disk.

To Generate a Workstation Shell for NetWare 386 V3.11:

The instructions for installing NetWare 386 on a workstation is exactly the same as the procedure for installing NetWare 286 on a workstation. For instructions on this installation and configuration, refer back to page 49 on "To Generate a Workstation Shell for NetWare 286 V2.2."

Loading LAN Manager V.2.0

The procedures in this section are for LAN Manager V2.0. For other installation and configuration instructions, refer to your LAN Manager User's manual.

The following instructions apply only to installing the LAN Manager on a DOS platform. Do not start LAN Manager until after it's installed. Use the Microsoft instructions to complete the installation procedure. Microsoft includes support for the SMC PLUS family adapters. Select the SMC adapter from the list provided by Microsoft.

To Install the LAN Manager:

1. Copy the LAN Manager driver to the driver directory used by LAN Manager.

For example, when installing a LAN Manager server or enhanced

workstation using the normal directory structure type:

```
COPY MACSMC.DOS C:\LAN-  
MAN\DRIVERS\ETHERNET
```

When installing a LAN Manager basic workstation type:

```
COPY MACSMC.DOS C:\LAN-  
MAN
```

2. Modify the PROTOCOL.INI in accordance with the adapter type.

- a. For jumper-configured adapters, use a text editor to add the following lines to the file:

```
[MACSMC = F]  
DriverName = MACSMC$  
IOBase = 0x280  
RAMAddress = 0xD000  
IRQ = 3
```

Replace the above IOBase, RAMAddress, and IRQ values with the values appropriate for your adapter card. If you aren't

sure which adapter type you have, refer to Section 1.0 or use the setup above. A more complete explanation of these parameters and their appropriate values are provided in section 5.0. If you have a software-configurable or Micro Channel adapter, you can simplify your parameters by using step 2b.

- b. For software-configurable and Micro Channel adapters, use a text editor to add the following lines to the file:

```
[MACSMC_NIF]  
DriverName = MACSMC$
```

3. Reboot the system and bring up LAN Manager using the instructions supplied by the LAN Manager vendor.

For additional instructions, refer to either the **LAN Manager User's Manual** or the **install.doc** file included with the SuperDisk.

Installing a Boot ROM

Installing a Boot ROM

A socket is provided on the adapter for installing an optional ROM device – for example, a boot ROM device, which enables the computer to load the operating system software over the network. Boot ROMs are available from your dealer.

To install an optional ROM, you must insert the ROM device into the ROM socket and configure the ROM window size and base address.

Inserting the ROM

Hold the ROM device without touching its pins. See Figure 1, 2, or 3 in the Introduction for an illustration of this procedure. Carefully insert the device into the socket, making sure that the notch in the ROM device is aligned with the notch in the device socket, and all pins are positioned

over socket openings. Gently move the device from side to side as you seat the pins. Verify that all pins are fully seated in the socket.

Note

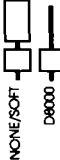
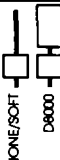
Only Boot ROMs V2.0 and later should be used with these three adapter boards.

ROM Window Size and Base Address

Most ROM devices designed to be used with the Ethernet adapter require 16 Kbytes of address space. To configure a 16-Kbyte ROM, move the jumper at W2 to D8000 (refer to Table 7). This will enable the ROM to respond to addresses in the range, D8000 – DBFFF. If this memory range is occupied, you must set the W2 jumper back to NONE/SOFT and use the software setup program to establish the ROM base address at another location.

If necessary, you can change the ROM window size. The default setting, when a ROM is enabled, is 16 Kbytes, or 0 Kbytes when the ROM is disabled. To change the window size for a special purpose 32-Kbyte or 64-Kbyte ROM device, you must use the setup program. If you aren't sure

what size ROM you have, consult the ROM's installation instructions.

ROM Base Address	W2
None/Soft	 NONE/SOFT D8000
D8000 (Used only with 16 Kbyte ROM device)	 NONE/SOFT D8000

FACTORY
SETTING

Table 7. Boot ROM Options

Network Interconnections

Thin Ethernet

Follow the instructions in this section to connect your Elite16 and Elite16 Combo adapter to thin Ethernet cable.

Connecting to Thin Ethernet Cable

1. Attach the BNC "T" connector (included with your adapter) to the BNC network port at the rear of the computer.
2. Attach one end of the coaxial cable to an open end of the "T" connector on the first computer. Align the notches in the cable-end with the posts on the "T" connector, push the cable in, and twist about one-quarter turn. Avoid severe bending or kinking of the cable.

Attach the other end of the cable to an open end of the "T" connector at the rear of the *second* computer. Continue making connections to the rest of the computers. The interconnection cable must not exceed the recommended length (185 meters for 10Base2 or 300 meters for the extended length option) prescribed by the protocol used. The interconnection cable can be attached to signal repeaters to extend the network.

3. When all computers have been connected, attach a 50 ohm cable terminator to each end of the entire segment.

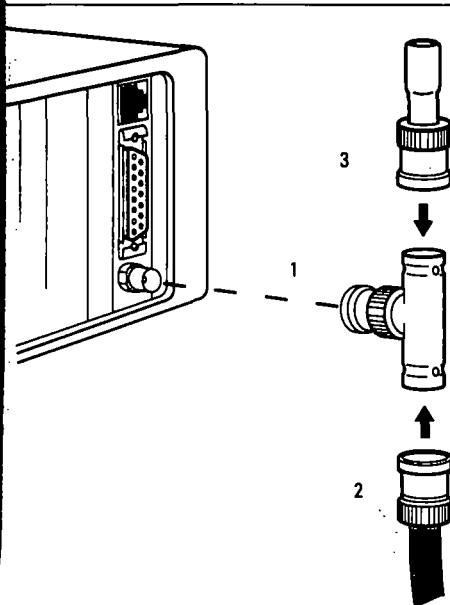


Figure 14. Attaching the T-Connector, Cable & Terminator

Thin Ethernet Segment

A thin Ethernet cable segment is the length of the cable between terminations. The Ethernet adapter functions with 185 (IEEE 10Base2) or 300 meter (extended length option) cable segments without any jumper changes. Two types of thin Ethernet cabling are commonly used: IEEE 10Base2 and extended length option. Pick one type of cabling and consistently obey the protocol of that type throughout your network. If you mix the rules, for example, using the two repeater links permitted by 10Base2 with the 100 nodes per segment permitted under the extended length option, your network may have an excessive number of errors or may not operate at all.

If your network uses standard 185-meter cable segments, all thin Ether-

net cable segments in the network can be up to 185 meters long. Five standard length cable segments may be connected in line using commercially available repeaters. The total network span with five standard length segments is 925 meters. No more than four repeaters can be on the signal path from one node to any other node. The standard 185 meter segment length is recommended because it allows you to use common thin Ethernet components which conform to the IEEE standard.

If your network is using extended-length 300-meter segments, all thin Ethernet cable segments in the network can be up to 300 meters long. Three 300-meter cable segments may be connected in line using repeaters.

The total network span with three extended length segments is 900 meters. No more than two repeaters can be in the signal path from one node to any other node. If you are using extended length segments, all repeaters and transceivers must be designed for 300-meter operation. In addition, all LAN adapter boards (other than this adapter) must be configured to the extended segment length, if a configuration choice is required.

Note that you cannot use Ethernet adapters to extend 185-meter segments to 300-meter cable segments unless all LAN adapters and repeaters used in the network are capable of operation on the extended segment length.

Interconnecting Thin and Thick Ethernet

Thin Ethernet cable segments can be connected to thick Ethernet cable segments through a signal repeater or a BNC-to-N type adapter. If you are

interconnecting through a repeater, attach the repeater to the Ethernet cable through a transceiver. (This must be done when connecting any cable segments in an Ethernet network.)

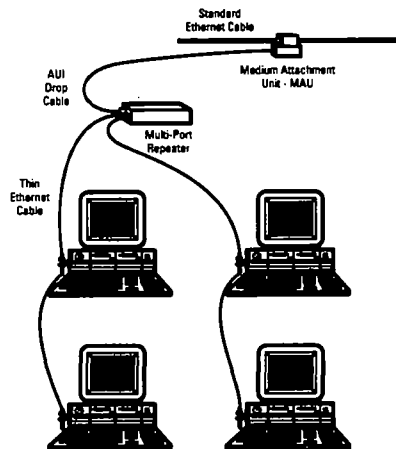


Figure 15. Interconnecting Thin and Thick Ethernet

CHARACTERISTICS	STANDARD LENGTH SEGMENT	EXTENDED LENGTH SEGMENT
Standard	IEEE 802.3 10BASE2	IEEE 802.3 10BASE2
Data Rate	10 Mbits per second	10 Mbits per second
Segment Length	185m	300m
Maximum number of segments between nodes	3 coax* + 2 repeater links	3 coax*; no repeater links
Maximum number of repeaters between nodes	4 when using 2 repeater links	2
Network Span	925m	900m
Maximum number of nodes per segment	30	100
Maximum number of nodes per network	1024	1024
Minimum space between nodes	0.5m	0.5m
Cable Type	RG58 A/U or C/U, 50 Ohm, single shield, BNC connectors	RG58 A/U or C/U, 50 Ohm, single shield, BNC connectors

* A coax segment contains nodes while a repeater link segment does not.

A repeater link segment is used for extending the distance between coax segments.

Table 8. Thin Ethernet Network Characteristics

Follow the instructions in this section to connect your Elite16, Elite16T and Elite16 Combo adapter to thick Ethernet cable.

The AUI port is used to attach a thick Ethernet AUI drop-cable to your Elite16, Elite16T and Elite16 Combo adapters. The adapter boards will operate on an Ethernet network by attaching an AUI drop-cable to the AUI port and to a trunk coaxial cable through a media attachment unit (MAU) transceiver. The MAU acts as the interface to an Ethernet network using thick cable or any Ethernet medium. The adapter board's AUI port can also be used for operation with other types of cabling such as fiber-optic.

Connecting to Thick Ethernet Cable

1. Starting with the first computer to be connected, attach a drop-cable to the AUI port on the Ethernet adapter (Figure 16).

A sliding latch is provided on the AUI port that locks the cable to the connector. The sliding latch is

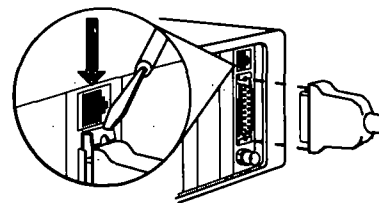


Figure 16. Attaching the AUI Drop Cable

snug and requires some effort to lock in place.

2. Attach an MAU transceiver at a marked location on the Ethernet cable (Ethernet trunk coaxial cable is marked at 2.5 meter intervals). Several types of cable tap kits are available; follow the instructions provided with the kit you are using.
3. Connect the other end of the AUI drop-cable to the MAU transceiver (Figure 17). Secure the AUI connector with the sliding latch.
4. Attach all of the computers and segments to the main or "spine" Ethernet cable in similar fashion.

- Use a signal repeater to attach each additional cable segment or "rib" (500 meters each, maximum).
- Attach a 50 ohm cable terminator at each open end of every spine segment.

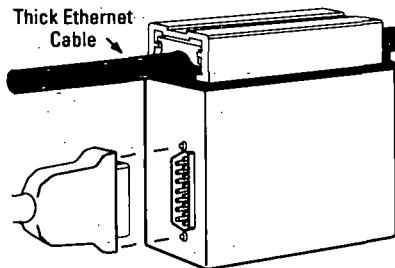


Figure 17. Attaching the Transceiver

Thick Ethernet Network

A thick Ethernet cable segment is a continuous thick coaxial cable up to 500 meters in length. Typically, a thick Ethernet network is composed of a main cable segment, or "spine," with additional segments, or "ribs," attached to the main cable segment through repeaters. Computers are generally attached to the rib segments, but may also be attached to the spine segment.

Thick Ethernet network connections are made through AUI drop cables. The AUI drop cable can be up to 50 meters in length. One end of the drop cable is attached to the AUI port on the Ethernet adapter. The other end of the drop cable is attached to the thick Ethernet cable segment through a transceiver. (See Figure 23)

CHARACTERISTICS	THICK ETHERNET
Maximum Cable Segment Length	500 meters
Maximum Segments In-Line	3 (+ two repeater links)
Network Span with Repeaters	2500 meters
MAU Attachments Per Segment	100
Adapter Port Selection – W3	AUI Port
Cable Type	Rugged/Insulated Trunk Coaxial
Minimum Node Spacing	2.5 meters (between tap marks)

Table 9. Thick Ethernet Network Characteristics

Unshielded Twisted Pair

Follow the instructions in this section to connect your Elite16T and Elite16 Combo adapter to an unshielded twisted pair (UTP) network port.

The twisted-pair network port on the Ethernet adapter board is a modular, RJ-45 eight-pin socket. Each end of the twisted-pair network interface cable has a mating, RJ-45 type, eight-pin modular plug. Table 10 defines the function of each pin.

10BaseT Twisted-Pair Interconnection

The following items are required to interconnect the network computers to a 10BaseT twisted-pair network:

- A twisted-pair interface cable for each computer.
- A local concentrator for interconnecting computers or a wall jack wired for 10BaseT twisted-pair cable that leads to a concentrator in a wiring closet.

1. Insert the modular plug at one end of the interface cable into the RJ-45 twisted-pair wire network port at the rear of the computer.
2. Attach the other end of the interface cable to an input port of a 10BaseT-compatible concentrator.

Link Status

When the computer has been connected to a concentrator port and both systems are powered on, verify the connection by observing the green link integrity LED indicator provided above the twisted-pair network port on the adapter board. If the link status light is off, it is assumed that you are using coaxial and that port will be enabled. When a valid connection exists, the link status LEDs at the adapter board and at the concentrator are lit. If the LEDs are not lit, and the

computer and concentrator are powered on, check the modular plug connection at the adapter board and at the concentrator and all wiring.

The polarity status LED is ON if the polarity of the twisted pair receive wires is normal. It is OFF if the polarity is reversed. The adapter will automatically correct for reversed polarity.

Using Existing Phone Cable

The existing telephone wiring in your building can be used for network interconnection if the wiring meets minimum standards and any wall jacks are wired correctly. Before starting the installation, verify that all twisted-pair wires meet the requirements

described in Appendix A "Network Components and Setup".

The existing telephone wiring may consist of a separate eight-conductor, twisted-pair cable routed to each wall jack, or it may consist of dozens of twisted-pair conductors in a cable bundle. If a cable bundle is used, the

conductors for each phone line have been separated from the bundle and attached to the wall jack:

In either case, the arrangement of twisted-pairs at the wall jack in a typical telephone installation is usually not acceptable for network signal transmissions. The two twisted-wire

Wire Pair	Color Code	Function	Modular Wall Pin Number
1	orange/white band	network signals	2
1	white/orange band	network signals	1
2	green/white band	network signals	6
2	white/green band	network signals	3
3	blue/white band	telephone	4
3	white/blue band	telephone	5
4	solid gray	telephone	8
4	solid orange	telephone	7

Table 10. Example Color & Wire-Pair Configuration

pairs required for network signals must be wired to the wall jack in the following arrangement:

Pair 1 - attach to pins 1 and 2.

Pair 2 - attach to pins 3 and 6.

The twisted-wire pairs for telephone signals (if used) are attached to the remaining pins.

Determine which conductors are twisted together, record the wire colors for each pair and note the pin to which each wire is attached. For example, an eight-conductor cable may have the color and wire-pair configuration shown in Table 10.

Network interconnections are usually made in a wiring closet. You must be able to identify and separate the conductors which are

carrying network signals from the conductors that are used for telephone operation. The color code and wire-pair arrangement of telephone cable will vary from one manufacturer to another.

Interface Cable Wiring

The twisted-pair interface cable provided has an eight-pin modular plug at each end that mates with the twisted-pair network port on the LAN adapter board and with an RJ-45 modular wall jack. If you are making your own interface cables to use as dedicated network wiring, or as extension cables, refer to Figure 18 for wiring information.

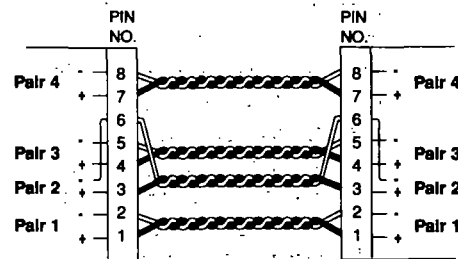


Figure 18. Interface Cable Wiring

Wiring Closet Termination

If you are using the existing wiring in the building, concentrators are typically mounted inside the wiring closet, where the telephone conductors are terminated at a wiring panel. A segment of twisted-pair wire is attached to the conductors from each network computer

at the termination panel and plugged into a concentrator port. Refer to the notes you made to identify the conductors used for network signals. If installing a new network cable, the wire pairs for each computer may be attached directly to an RJ-45 plug and connected to a concentrator port. The wire pairs may also be terminated at a wiring panel (or other termination device) and then connected to a 10BaseT concentrator port through a twisted-pair wire segment that has an RJ-45 plug at one end. Connect each set of twisted-pair wires to a concentrator port in the same manner.

Most concentrator manufacturers provide a means for connecting concentrators in a daisy-chain fashion. Refer to the concentrator's installation guide for specific information.

Concentrators

The Ethernet adapter when used with twisted-pair cable must always connect to a concentrator. This results in a star-wired network with the concentrator at the center of the star. The Ethernet adapter is compatible with 10BaseT concentrators from a variety of vendors such as SynOptics Communications, David Systems, NetWorth, and Cabletron.

The Ethernet adapter is also compatible with the AT&T and Hewlett Packard "StarLAN 10" twisted-pair signalling method by using software setup.

Using StarLAN 10 Concentrators

AT&T and Hewlett Packard StarLAN 10 compatible adapters operate over StarLAN-type wiring and use 10 Mbps Ethernet speeds and protocols, but original StarLAN 10 products did not provide the Link Integrity feature required by the 10BaseT standard. Your Ethernet 10BaseT adapter can operate with StarLAN 10 products that do not have Link Integrity providing that you disable the Link Integrity test function on the adapter. To disable the Link Integrity test function, run the software setup program and select Link_Int = D.

Note: If the thin Ethernet (BNC) connection is used, the Link_Int option must be turned off (Link_Int = D).

Standard	IEEE 802.3 10BaseT
Data Rate	10 Mbits per second
Maximum length of connecting cable between a computer and concentrator	100m
Maximum number of (computers) nodes per network	1024
Twisted pair cable	AT&T D-inside wire (DIW & PDS), IBM Type 3

Table 11. Unshielded Twisted Pair Network Characteristics

Troubleshooting

Using DIAGNOSE for Troubleshooting

This section explains what to do if your Ethernet adapter is not functioning.

The diagnostic program provided on the software diskette can be used in conjunction with this information to assist you in locating the source of a problem if the installed adapter does not run properly. The Main Menu option that will pinpoint a specific problem has also been listed here for your convenience. If you are not familiar with running DIAGNOSE, please see the "Diagnostic" section in this manual.

Before running DIAGNOSE, make sure that the adapter is completely seated in the computer's expansion slot, and no cables inside the computer are loose.

DIAGNOSE: Basic Adapter Test

If all the other workstations connected to the server are working properly and your workstation is the only one affected, the problem is probably in the hardware or software of the adapter you just installed. This utility verifies if the network card and PC are operational.

If the diagnostic Basic Adapter Test passes, the hardware is probably operating properly. If the test fails, the most common hardware problem is that another device is conflicting with the Ethernet adapter.

DIAGNOSE: Set Configuration

If you are having a problem with the hardware configuration, you can check this option to see what configuration information is being received from the board.

Before attempting to resolve a configuration conflict, review the section in this manual on avoiding configuration conflicts. Also review the **sysmap.doc** file on the software driver diskette for up-to-date information on the normal configuration settings of all boards. Once you have done this, choose another configuration for your Ethernet adapter.

DIAGNOSE: Initiate/Respond to Messages

If other workstations are also affected, the source of the problem is the cabling or file server. This utility will check the network cabling.

1. To determine whether the problem is the cabling or the file server, run the diagnostic program using remote loopback between two nodes. If the remote loopback test passes without errors, the problem is probably the file server, not the cabling. If the test fails the problem is probably the cabling.
2. Check the cable connection to other computers. In an Ethernet network using thin cable, check the computers that are daisy chained to the computer you are troubleshooting. In an Ethernet

network using thick cable, check the drop cable connection at the transceiver.

3. If you think you have a cabling problem, try splitting segments to isolate the cable defect, or replace the cable with one known to be good.
4. Verify that the network cable is securely attached to either the BNC, AUI, or UTP port.
5. If the BNC or AUI port is used, verify that 50 ohm cable terminators are installed as required. Terminators must be 50 ohm impedance (within 2%) or errors may occur. Terminators are installed at both ends of every cable segment.
6. Make sure that the interconnecting cables meet IEEE standard requirements.

Network Operating Software Problems

If the problem is not found in the hardware, then check the software:

1. Make sure that you copied any required software drivers from the driver diskette as instructed in the documentation included with your networking software.
2. If you are using Novell NetWare, type the following at the DOS prompt:

ipx i

This enables you to verify that –

- The driver you are using is appropriate for the type of adapter you have.
- The driver is the latest version. (You can verify the version number with your dealer.)

If running **ipx i** does not uncover a problem, contact your dealer for technical assistance.

If you are using a driver other than the Novell driver, verify the software driver settings match the actual Ethernet adapter setting as specified in the **install.doc** file provided with the driver.

ROM Device

Prior to troubleshooting an installed ROM device, verify that the adapter, cabling, and file server are working. If you are still experiencing difficulties, then check the ROM device.

1. If a ROM device is installed on the adapter, verify that the ROM device is correct for the computer system and network software you are using. Make sure that every

pin on the ROM device is seated firmly in the socket.

2. Verify the boot image files have been installed properly on the file server as specified by the network operating system documentation.

Technical Assistance

You can get assistance with installing your Ethernet adapter by calling your dealer. Before calling for technical help, be prepared to supply the following information:

1. Computer system manufacturer and model, BIOS manufacturer, BIOS date, BIOS version, CPU type, system clock speed, bus speed, memory size, monitor type (color, monochrome, high resolution, etc.), and printer type (serial or parallel).
2. DOS version, network software manufacturer and version, software driver version, software driver file size and date.
3. Applications software name, manufacturer, version, and date.
4. Contents of the AUTOEXEC.BAT and CONFIG.SYS files in the root directory of the computer(s) having problems.
5. Error codes or messages displayed by diagnostic programs, network operating system, or applications software.
6. The type of interconnecting cable used (please be specific) and the resistance value of terminators installed.
7. Types of LAN adapters used in the network. The configuration parameters (I/O address, IRQ channel, RAM size and base address, ROM size and base address) of the LAN adapter(s) having problems.
8. Other option boards and functions installed in the computer and their configuration parameters (I/O address, IRQ level, RAM size and base address, ROM size and base address). Possible option boards include: graphics adapters, mouse controllers, extended memory boards, tape controllers, modems, other LAN adapters, and printer controllers.
9. Type of concentrator used in a twisted pair network (manufacturer and model number).

Appendices

Appendix A

Network Components and Setup

The components specified in this section, as well as precut and preassembled cables, are available from your dealer. The manufacturers listed are for reference purposes only; equivalent products from other manufacturers may be used.

The following components make up an Ethernet network and are used with the Elite16, Elite 16T, and Elite16 Combo adapters unless otherwise specified. Please see Figures 1, 2, and 3 in the "Introduction" section of this manual for specific adapter port references.

LAN adapter – A LAN adapter is the interface between the computer and the network cable. Your Ethernet adapter has three types of network ports.

- The UTP port is used for 10BaseT unshielded twisted pair connection. (Elite16T and Elite16 Combo)
- The BNC port is used for direct thin Ethernet network connection. (Elite16 and Elite16 Combo)

- The AUI port is used for connecting a transceiver to a thick Ethernet network using thick cable or any Ethernet medium. (Elite16, Elite16T and Elite16 Combo)

Repeater – A repeater is used to connect cable segments together. The repeater retimes and transmits data signals as they pass from one segment to another. Single port and multiport repeaters are available for coaxial or fiber optic cable.

Transceiver – An external transceiver is used to connect AUI drop-cables to thick Ethernet coaxial cable. Transceivers are also available for connection to thin Ethernet, twisted-pair, and fiber-optic cable.

Thin Ethernet Cable and Components

The following information pertains to the Elite16 and Elite16 Combo adapters.

BNC "T" connector – Used to attach the Ethernet adapter to thin Ethernet cable.

Cable terminator – A terminator with 50 ohm nominal impedance must be installed at each end of every cable segment. A thin Ethernet terminator has a BNC coaxial connector. Coaxial 50 ohm BNC plug terminator Anixter part number is 073989.

"T" connector cover – A plastic "clam-shell" cover which insulates the BNC "T" connector from electrostatic dis-

charge (ESD). AMP part number is 221586-1.

Thin Ethernet cable (RG58 A/U or C/U coaxial cable) – Stranded tinned copper, 50 ohm nominal impedance, for use with BNC-type coaxial connectors. The Belden part numbers for cable only are 9907 and 89907 (plenum rated).

Note: Coaxial cable designated RG58 U is similar in appearance to RG58 A/U cable but does not comply with the IEEE thin Ethernet standard.

Thick Ethernet Cable and Components

The following information pertains to the Elite16T and Elite16 Combo adapters.

AUI drop-cable – The interface cable between the Ethernet adapter and a MAU attached to the trunk coaxial cable or other thick Ethernet medium. The drop-cable has a 15-pin AUI connector at each end and may be up to 50 meters in length. The Belden part numbers for cable only are 9901 and 89901 (plenum rated).

Cable terminator – A terminating resistor with 50 ohm nominal impedance must be installed at each end of every trunk coaxial cable segment. A thick Ethernet terminator has

an N-type coaxial connector. Anixter part number is 080870.

DB-15 AUI connector – Used at each end of the AUI drop-cable. Anixter part numbers are 081424 (female, solder type), 080867 (slide lock), 081425 (male, solder type), 080868 (locking post).

Figure A-1 shows the pin locations for the male connector. The pin locations for the female are the mirror image of this. of the AUI connector has been shorted to ground, a thermistor type fuse will open the circuit and remove the voltage from pin 13. It requires approximately one hour from the time the short circuit is removed for the

thermistor to restore the +12 volts to pin 13.

Thick Ethernet cable (Ethernet trunk coaxial cable) – Solid tinned-copper conductors, 2.5 meter tap-in markings, 50 ohm nominal impedance, with N-type coaxial connectors. The Belden part numbers for cable only are 9880 and 89880 (plenum rated).

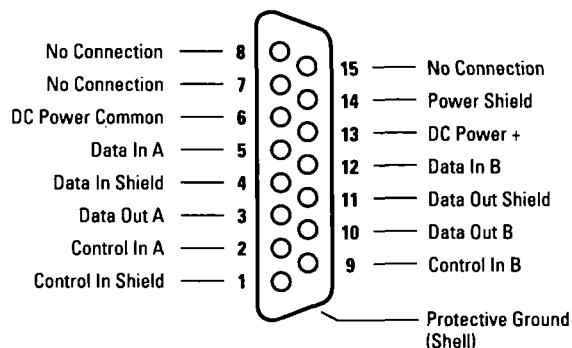


Figure A-1. Mail AUI Connector Pin Functions

Unshielded Twisted Pair Cable

The following information pertains to the Elite16T and Elite16 Combo adapters.

- Unshielded, twisted-wire pairs (2 pairs)
- 22, 24, or 26 gauge
- Characteristic impedance of 85 to 110 ohms at 10 MHz
- Maximum attenuation of 11.5 dB/100 meters at 10 MHz
- Maximum attenuation of 7.2 dB/100 meters at 5 MHz
- RJ-45 modular plugs: Molex 90075-0037, or equivalent
- Crimper tool: Molex 11-01-0026 or equivalent

- RJ-45 modular wall socket: Molex 95015-0003, or equivalent

Note: Telephone-type cable commonly known as "silver satin" is NOT ACCEPTABLE. Silver satin cable is flat in shape and typically has a silver vinyl jacket. Use of silver satin cable can cause a false data collision on the network.

AT&T D-Inside Wire (DIW and PDS)	
4-Pair/Non-Plenum	DIW 4/24 W1000
4-Pair/Plenum	C-Plenum 4 R1000
25-Pair/Non-Plenum	DIW 25/24 R1000
25-Pair/Plenum	C-Plenum 25 R1000
IBM Type 3	
6-Pair Twisted	Belden – 9566
2-Pair Twisted	Belden – 9562
4-Pair Twisted	Data Set Cable Company – 2404

Table A-1. Unshielded Twisted Pair Cable

General

Hardware compatibility:	IBM PC, XT, AT, non-Micro Channel PS/2, and compatible computers.
Software compatibility	NetWare, LAN Manager (DOS, OS/2), OS/2 Extended Edition, LAN Server, DECnet-DOS/PCSA, DEC Pathworks, TCP/IP, PC/NFS, UNIX, Xenix and others.
Standards supported:	IEEE 802.3 10Base5 and 10BaseT, Ethernet Version 2
I/O base address:	200 to 3E0 (hex)
Interrupt request channel:	IRQ2/9, 3, 4, 5, 7, 10, 11 or 15
RAM buffer size:	16 Kbytes
RAM buffer base address:	80000 to FC000 (hex)
RAM base above 1 Mbyte:	100000 to FFC000 (hex)
RAM speed:	100 ns

Electrical

Environmental

Physical

Height (without bracket): . . . 3.90 inches (9.906 cm)
Length (without bracket): . . . 6.3 inches (16.15 cm)

General

RAM buffer size:	16 Kbytes
RAM buffer base address:	80000 to FC000 (hex)
RAM base above 1 Mbyte:	100000 to FFC000 (hex)
RAM speed:	100 ns

Electrical

Power (external transceiver): +12 VDC, 0.5 Amps, max.

Environmental

Storage humidity: 5% to 95% (non-condensing)

Physical

Length (without bracket): . . . 6.3 inches (16.15 cm)

Appendix C

System Configuration Chart

For future reference, record the configuration parameters for each board in your computer in the spaces provided in the System Configuration Chart. The first row shows the recommended Ethernet adapter settings. Write down the name of the option board, the expansion slot it occupies, the interrupt level (IRQ), and the memory space reserved for the board. For information on option boards that are already installed in your computer, consult the user instructions provided with them, or ask your dealer for assistance.

Board	I/O Address	IRQ	RAM Base Address	ROM Base Address	Slot #
Ethernet Adapter	280 (hex)	3	D0000	D8000	
Board	I/O Address	IRQ	RAM Base Address	ROM Base Address	Slot #

Index

A

Adapter

- Configuration, 23
- Configuration Parameters, 24

B

Basic Adapter Test, 39

- Initiate Test Messages, 40
- Responder, 40

Boot ROM

- See ROM

C

Cabling

- Elite16 Adapter, 83
- Elite16 Combo Adapter, 83 - 85
- Elite16T Adapter, 83 - 85

Components and Setup

- Elite16 Adapter, 82
- Elite16 Combo, 82
- Elite16T Adapter, 82

Concentrators

- StarLAN 10, 72

Configuration

- Avoiding Configuration Conflicts, 18
- Software Configuration Procedure, 29

D

Diagnostics

- Basic Adapter Test, 39
- exit to operating system, 42
- Initiate Test Messages, 40
- Introduction, 34
- Main Menu, 37
- Respond to Test Messages, 40
- Set Configuration, 37
- Set Configuration Menu, 37
- Starting the Diagnostics, 34

F

Features, 7

- Elite16 Adapter, 7

Elite16 Combo Adapter, 8

Elite16T Adapter, 8

I

I/O Base Address, 19

I/O Common Device Ports, 20

Installation

- Quick Adapter Installation, 13
- Steps for Installing, 18

IRQ

- Levels of Common Devices, 22

J

Jumper Settings

- Factory Jumper Settings, 23
- W1, 23 - 28
- W2, 23 - 25
- W3, 25

L

LAN

Driver Configurations Menu, 45 - 46 - 47 - 48 - 50 - 51

Driver Installation, 44

LAN Software Installation

Generating Server for NetWare 286 V2.2, 45

Generating Server for NetWare 386 V3.11, 53

Generating Workstation for NetWare 286 V2.2, 49

Generating Workstation for NetWare 386 V3.11, 54

Introduction, 44

Loading LAN Manager V2.0, 55

Loading NetWare 286 V2.2, 45

Loading NetWare 386 V3.11, 53

Loading ODI Workstation, 51

LAN Software Supported, 44

LED Indicators, 8

M

Memory

Memory Management Conflicts, 22

RAM Used by Various Devices, 21

N

NetWare

Generating a Network Server, 53

Generating a Workstation Shell, 45

Network Components and Setup, 82

O

ODI Workstation Installation, 51-53

P

Ports

AUI, 66 - 77

BNC, 62 - 77

UTP, 69 - 77

Q

Quick Installation & Configuration Instructions, 14

R

RAM

Base Address, 19

Buffer Base Address, 86 - 87 - 88

Buffer Size, 86 - 87 - 88

Device Usage, 21

Repeater, 82

ROM

Address Range, 88

Base Address, 59 - 86 - 87 - 88

Installing/Inserting, 58

S

Setup Options

Configuration Options Table, 31

Setup Program

Adapter Configuration, 28

Command Line Method, 30
Interactive Method, 30
Software Configuration Procedure
See Configuration
Specifications
Elite16 Adapter, 86
Elite16T Adapter, 87
Elite16T Combo Adapter, 88
StarLAN, 72
System Configuration Chart, 89

T.

Thick Ethernet

Cable and Components, 83
Cable Segments, 67
Network Characteristics, 68
Thick Ethernet (Elite16, 16T, and 16
Combo)

Cable Connections, 66

Thin Ethernet

Cable and Components, 83
Network Characteristics, 65

Thin Ethernet (Elite16 & Elite16 Combo)

Cable Connections, 62

Thin Ethernet (Elite16 & Elite16Combo)

Interconnecting Thin and Thick, 64

Troubleshooting, 75

Diagnostic Program, 76

ROM Device, 78

U

Unshielded Twisted Pair

Cable Specifications, 85

Unshielded Twisted Pair (Elite16T & 16 Combo)

Interconnection, 69

Interface Cable Wiring, 71

Link Status, 69

Using Existing Phone Cable, 70



SMC
(Standard Microsystems Corporation)
80 Arkay Drive
Hauppauge, New York 11788

For Technical Support, call:
(800) 992-4762 in U.S.A.
(800) 433-5345 in Canada

For Literature, call:
(800) SMC-4-YOU in U.S.A.
(800) 833-4-SMC in Canada
516-273-3100 Elsewhere

For information on SMC
LAN Products, call:
1-800-NET-LEADER