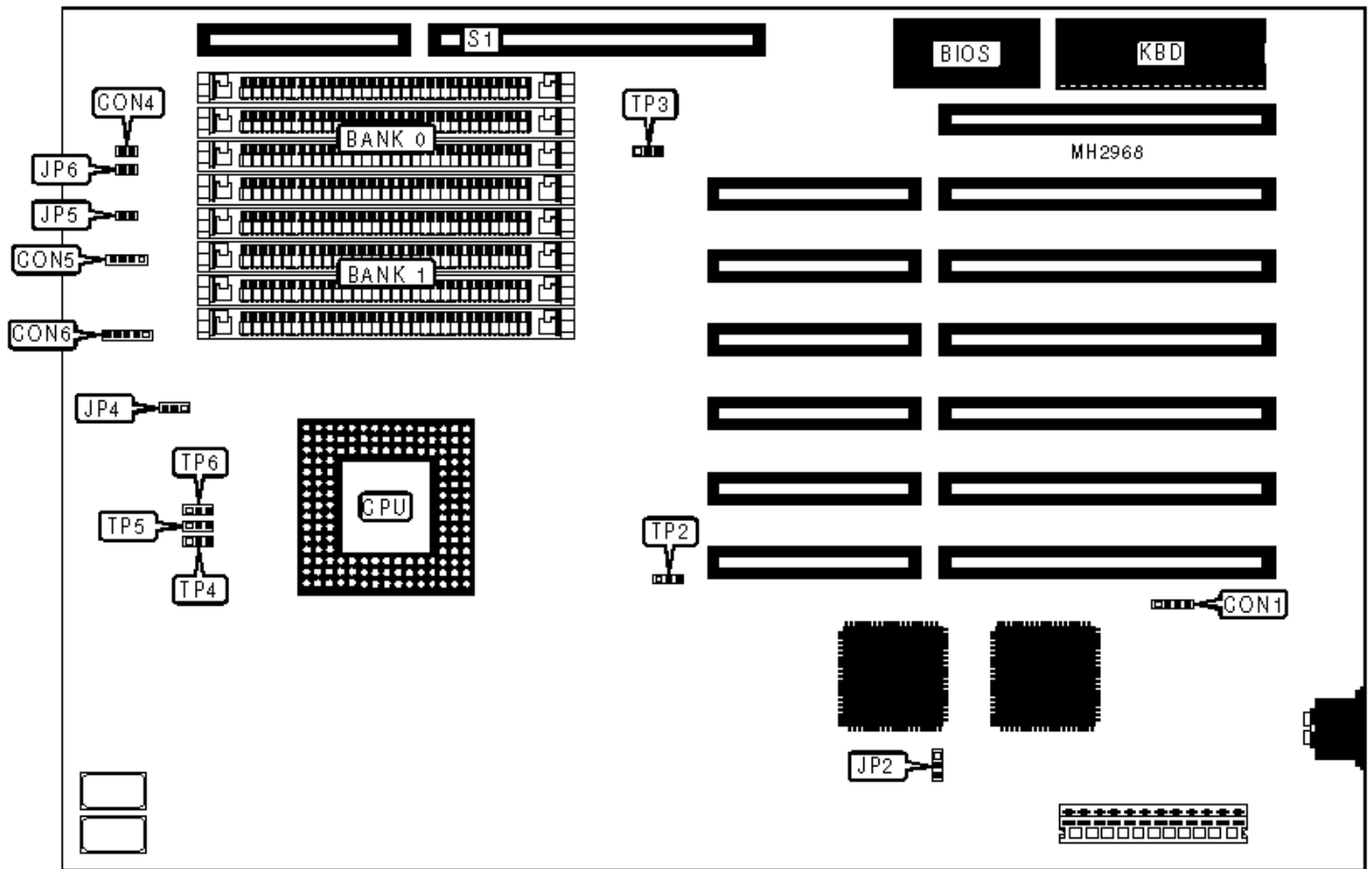


AQUARIUS SYSTEMS, INC.

ASI-486T

Configuration



CONNECTIONS

Purpose	Location	Purpose	Location
External battery	CON1	Turbo LED	JP5
Reset switch	CON4	Turbo switch	JP6
Speaker	CON5	External memory card connector	S1
Power LED & keylock	CON6		

USER CONFIGURABLE SETTINGS

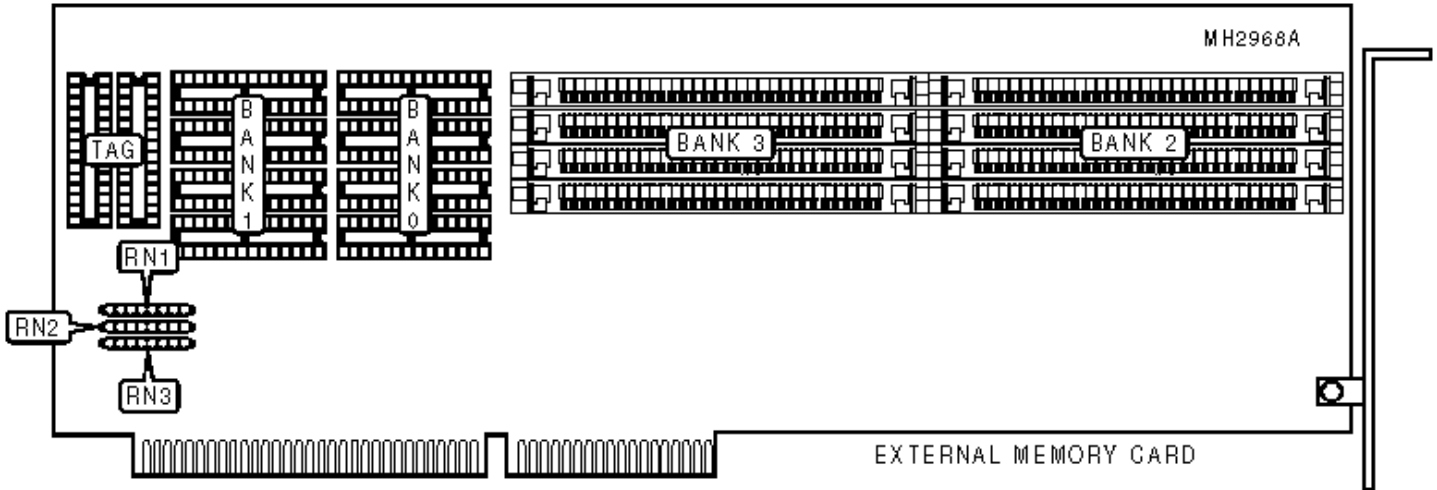
Function		Jumper	Position
»	Power good signal detect from power supply	JP2	pins 1 & 2 closed
	Power good signal detect from board	JP2	pins 2 & 3 closed
»	Factory configured - do not alter	TP2	pins 1 & 2 closed
»	Factory configured - do not alter	TP3	pins 1 & 2 closed
»	Factory configured - do not alter	TP4	pins 1 & 2 closed
»	Factory configured - do not alter	TP5	pins 1 & 2 closed
»	Factory configured - do not alter	TP6	pins 1 & 2 closed

DRAM CONFIGURATION

Size	Bank 0	Bank 1	Bank 2	Bank 3
1MB	(4) 256K x 9	NONE	NONE	NONE
2MB	(4) 256K x 9	(4) 256K x 9	NONE	NONE
3MB	(4) 256K x 9	(4) 256K x 9	(4) 256K x 9	NONE
4MB	(4) 256K x 9	(4) 256K x 9	(4) 256K x 9	(4) 256K x 9
4MB	(4) 1M x 9	NONE	NONE	NONE
8MB	(4) 1M x 9	(4) 1M x 9	NONE	NONE
12MB	(4) 1M x 9	(4) 1M x 9	(4) 1M x 9	NONE

16MB	(4) 1M x 9	(4) 1M x 9	(4) 1M x 9	(4) 1M x 9
16MB	(4) 4M x 9	NONE	NONE	NONE
32MB	(4) 4M x 9	(4) 4M x 9	NONE	NONE
48MB	(4) 4M x 9	(4) 4M x 9	(4) 4M x 9	NONE
64MB	(4) 4M x 9	(4) 4M x 9	(4) 4M x 9	(4) 4M x 9
Note: Bank 2 and Bank 3 are located on the external memory card.				

CPU SPEED CONFIGURATION	
Speed	JP4
25MHz	pins 1 & 2 closed
33MHz	pins 2 & 3 closed



CACHE CONFIGURATION			
Size	Bank 0	Bank 1	TAG
64KB	(4) 8K x 8	(4) 8K x 8	(2) 16K x 4
128KB	(4) 32K x 8	NONE	(2) 64K x 4
256KB	(4) 32K x 8	(4) 32K x 8	(2) 64K x 4

CACHE RESISTER CONFIGURATION			
Size	RN1	RN2	RN3

64KB	Installed	Not installed	Not installed
128KB	Not installed	Installed	Not installed
256KB	Not installed	Not installed	Installed